

CARLISLE STREET

ESQUIMALT ROAD

FLOWERING SHRUB
BORDER ALONG SIDEWALK.

VEHICLE PARKING (3)

PROPOSED NEW
CURB ALIGNMENT.

PARK PL

STREET EDGE BUMP OUT TO DECREASE
PEDESTRIAN CROSSING LENGTH AND
SIGNIFY VEHICLE ENTRY POINT FOR K9 UNIT.

EXISTING TREES TO
REMAIN (3)

PROPOSED EXTENSION OF EXISTING
STREET RAIN GARDEN WITH ADDITION
OF TWO NEW TREES.

NEW LIBRARY BREEZEWAY
ALIGNMENT.

K9 UNIT ENTRY.

MAIN BUILDING ENTRY. ALIGNS
WITH NEW LIBRARY BREEZE
WAY ACROSS PARK PLACE.

PROPOSED WATER FEATURE
ELEMENT WITH INTEGRATED
SEATING BETWEEN PUBLIC SPACE
AND POLICE CHIEF OFFICE.

PROPOSED SPECIAL
PAVING TO INDICATING
PUBLIC REALM.

PROPOSED PUBLIC
SEATING AREA WITH
TABLES AND CHAIRS.

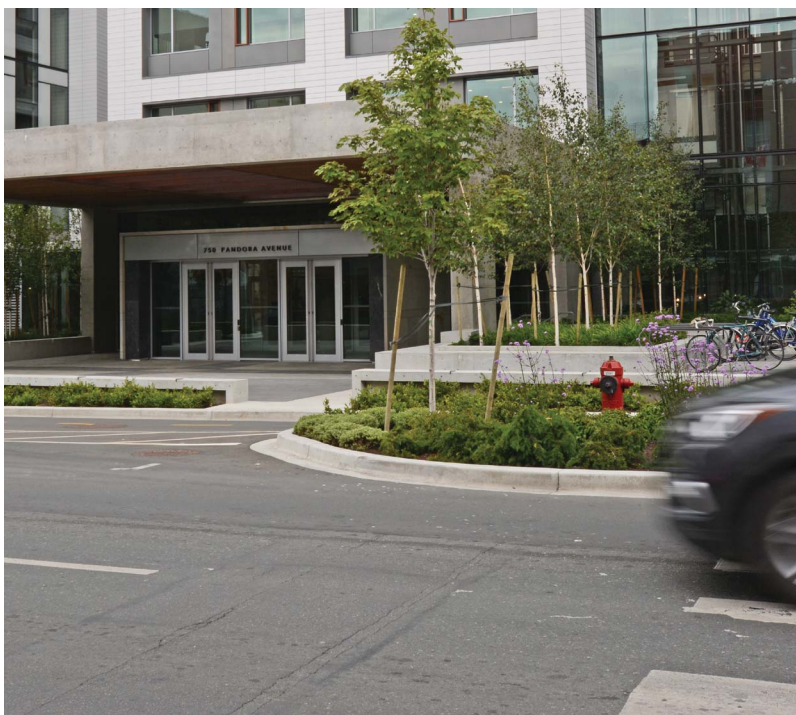
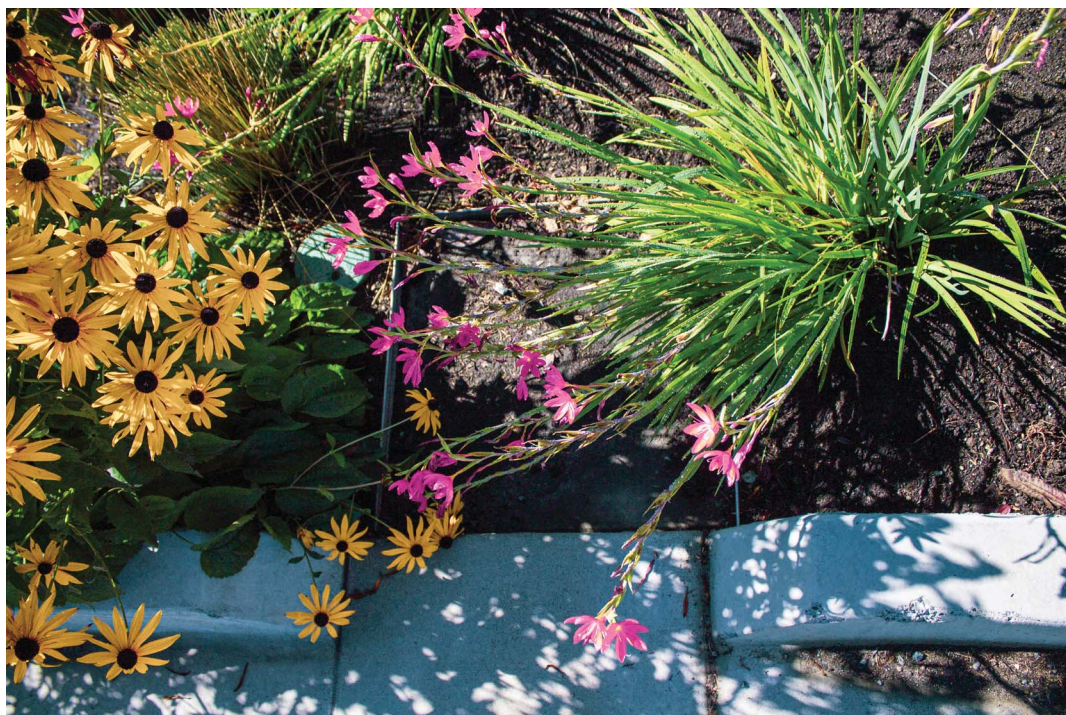
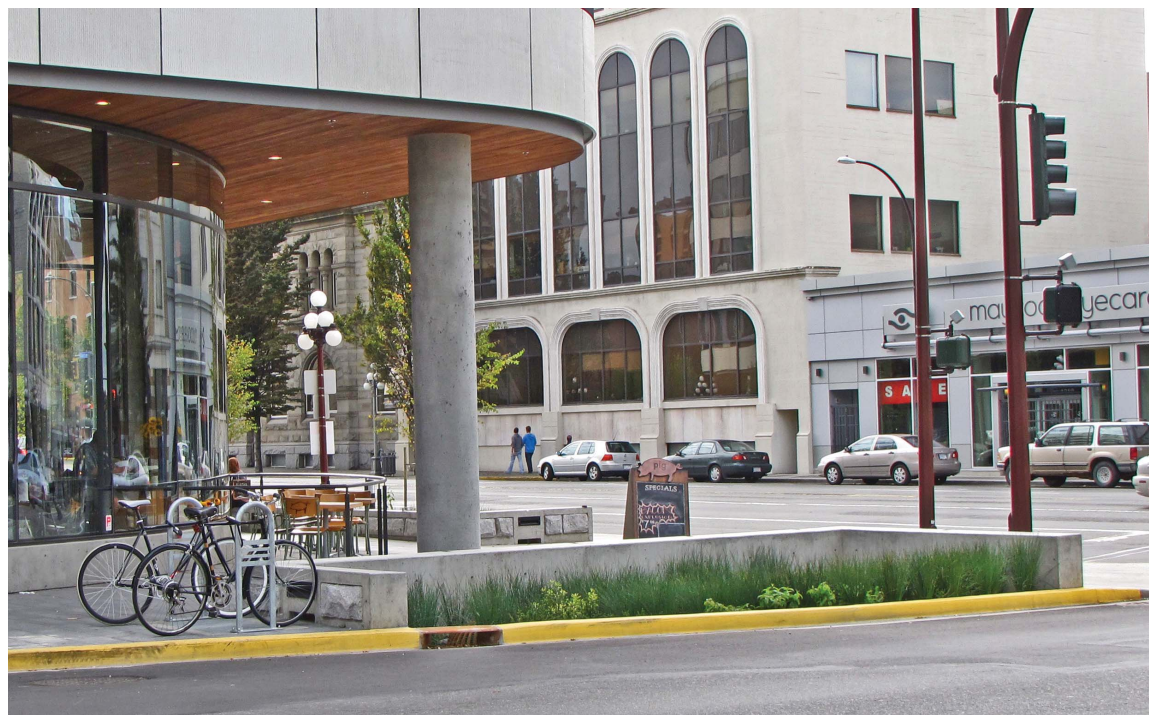
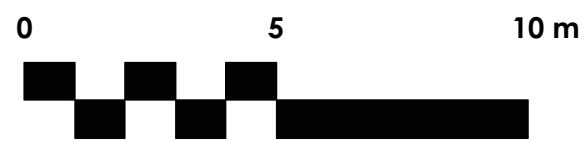
RETAINED STREET
CROSSING.

PROPOSED RAIN GARDEN TO
MATCH THE EXISTING PLANTING
BUMP OUT ACROSS PARK PLACE.

PROPOSED NEW STREET
TREE AND PLANTING.

VEHICLE PARKING (2)

PROPOSED CROSSWALK
CONNECTION.



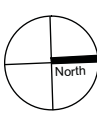
1 PRECEDENT IMAGES

Esquimalt
Public Safety
Building

500 Park Place,
Esquimalt, BC

PROJECT #: 20005

LANDSCAPE
PLAN



L100

SCALE: 1 : 150