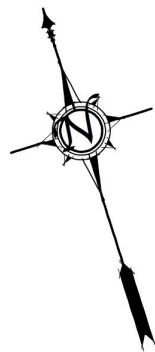


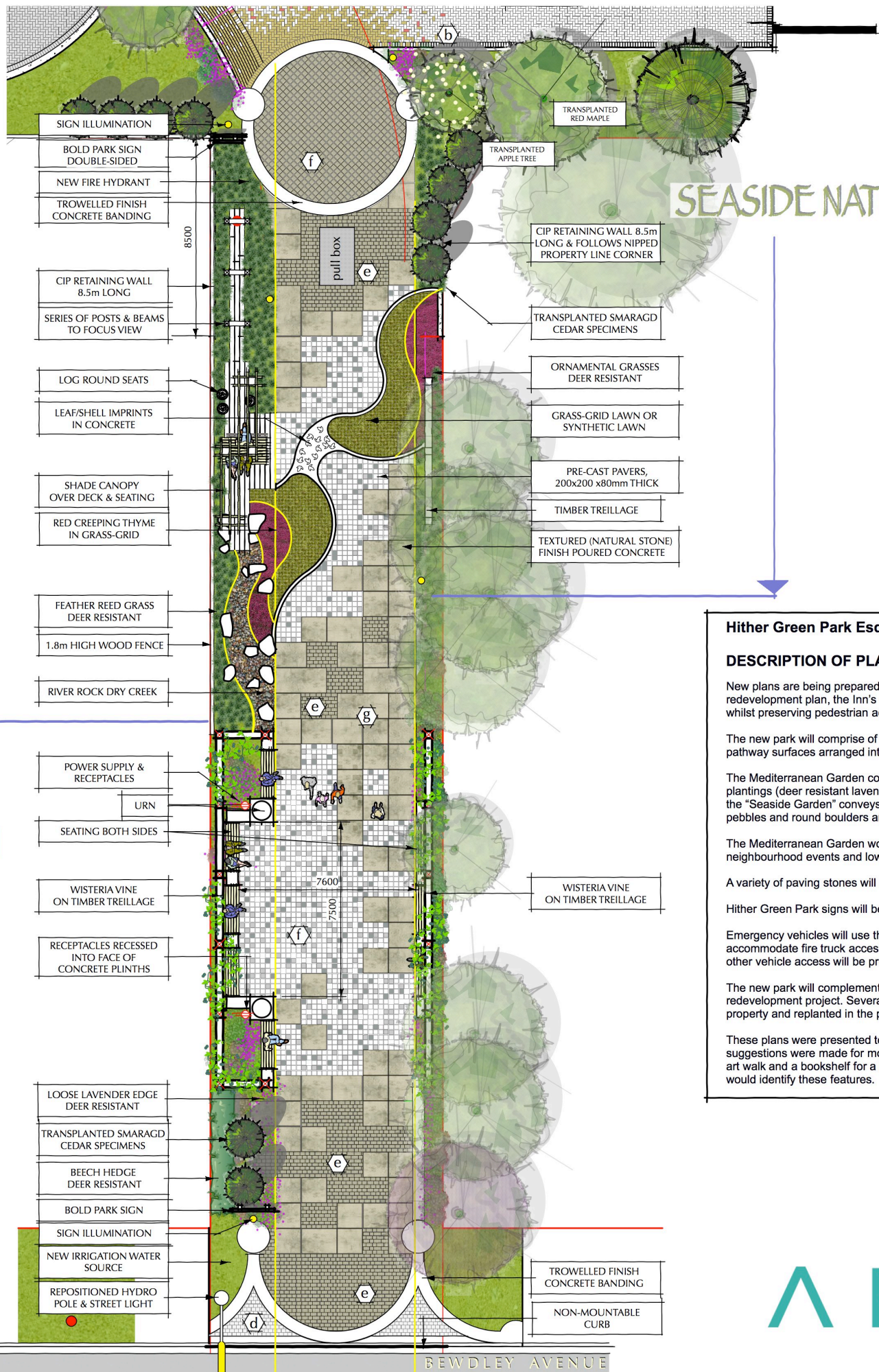
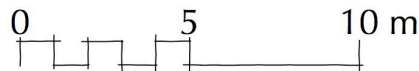
HITHER GREEN PARK

PROPOSALS



MEDITERRANEAN AROMATIC GARDEN & GATHERING SPACE

- a permeable paving, 80mm thick, herringbone bond, colour: "Sand/Brown"
- b permeable paving, 80mm thick, herringbone bond, colours: "Red", "Shadow" & "Desert Sand"
- c permeable paving, running bond, 80mm thick, colour: "Shadow" & "Desert Sand"
- d textured paver, 181x149x80mm, colour "Sierra Grey"
- e textured paver, 181, 219, 264 & 302x149x80mm, colour "Antique Brown"
- f permeable paver, 90mm thick "Venetian Cobble" or similar, colour "Granite" & "Tan Charcoal"
- g cast in place coloured concrete with texture mat finish to represent natural stone slab



SEASIDE NATURALISTIC GARDENS

Hither Green Park Esquimalt

DESCRIPTION OF PLAN

New plans are being prepared for the small green space on Bewdley Avenue. As part of the English Inn redevelopment plan, the Inn's owner, Aragon, will create a high quality public park and community events space whilst preserving pedestrian access to and from the Inn property.

The new park will comprise of a rich mixture of treillage, shade arbors, seating and ornamental plantings and pathway surfaces arranged into two distinct garden spaces; a "Mediterranean Garden" and a "Seaside Garden".

The Mediterranean Garden comprises broad paved surfaces, many park benches, and aromatic and scented plantings (deer resistant lavender, geranium, rosemary) encapsulated by substantial wooden colonnades, whilst the "Seaside Garden" conveys a more naturalistic character with drifts of tall ornamental grasses, sweeps of pebbles and round boulders and a decked seating area under the shade of a wooden arbor.

The Mediterranean Garden would be provided with power outlets for equipment supporting organized neighbourhood events and low key lighting will be provided so that the park can be safely visited after dusk.

A variety of paving stones will be used to create exciting surface textures and patterns.

Hither Green Park signs will be installed at each end of the park

Emergency vehicles will use the park as the primary access to the English Inn property and in order to accommodate fire truck access, the park's structures would be cleverly placed either side of the access lane. All other vehicle access will be prohibited from the park.

The new park will complement the ambitious landscape work being planned as part of the English Inn redevelopment project. Several small trees (established columnar cedars) will be transplanted from the Inn property and replanted in the park which will give the park the appearance of maturity.

These plans were presented to the Advisory Parks & Recreation Committee on 15th December 2016 and suggestions were made for modifying the paving to include a "chess board", a community bulletin board, a public art walk and a bookshelf for a local book swap. These good suggestions were recorded and finalized park plans would identify these features.

SMALL & ROSSELL
LANDSCAPE ARCHITECTS

3012 monzer road, sooke, b.c., v9z 0t9
t: 250-642-6967

design@smallandrossell.com
www.smallandrossell.com

ARAGON