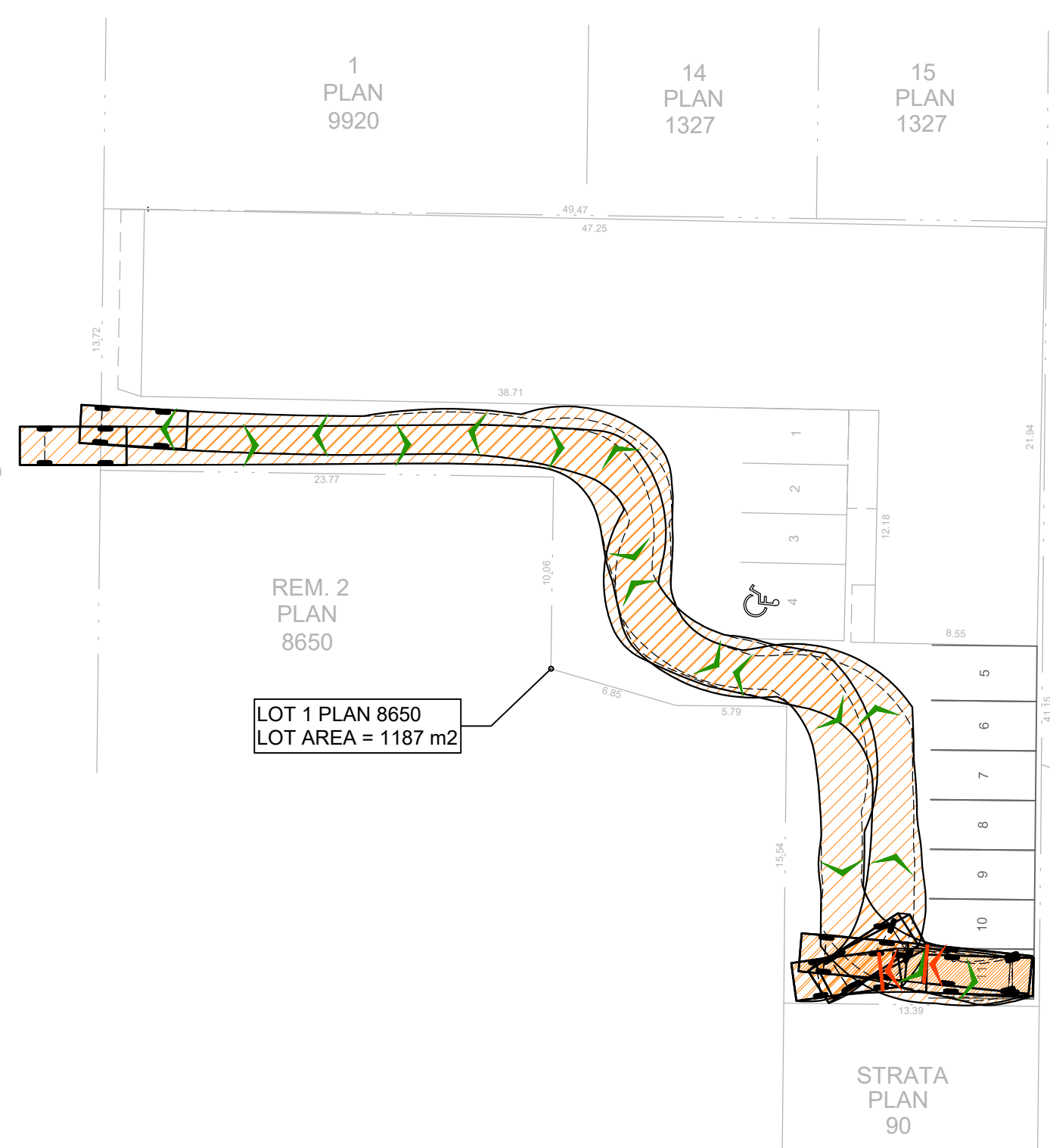
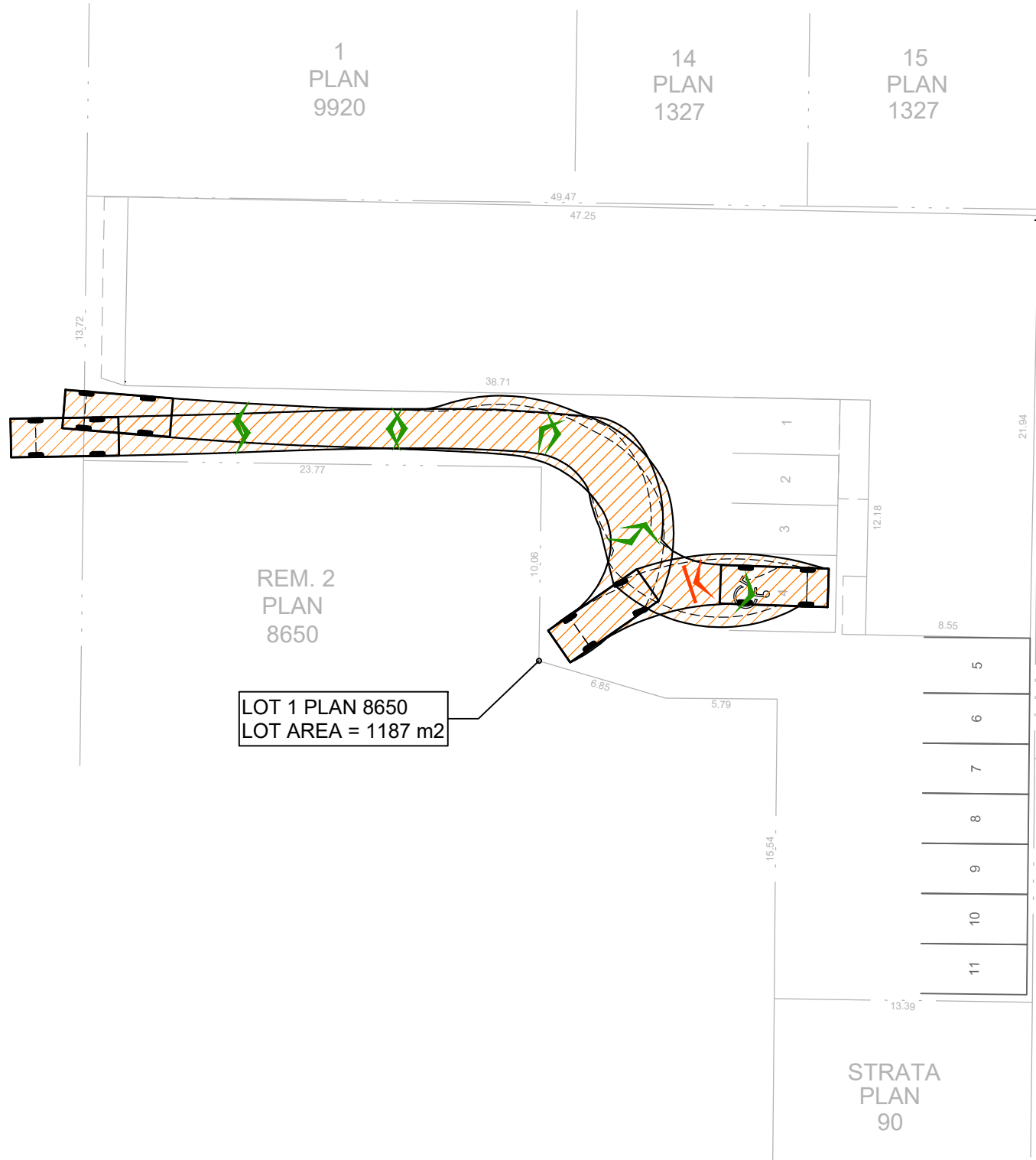


Aldebury Road

Aldebury Road

NORTH



**LEGEND:**

P - Passenger Car  
 Overall Length 5.600m  
 Overall Width 2.000m  
 Overall Body Height 1.555m  
 Min Body Ground Clearance 0.340m  
 Track Width 2.000m  
 Lock-to-lock time 4.00s  
 Curb to Curb Turning Radius 6.300m

PERMIT TO PRACTICE:

THESE DESIGN DOCUMENTS ARE PREPARED SOLELY FOR THE USE BY THE PARTY WITH WHOM THE DESIGN PROFESSIONAL HAS ENTERED INTO A CONTRACT, AND THERE ARE NO REPRESENTATIONS OF ANY KIND MADE BY THE DESIGN PROFESSIONAL TO ANY PARTY WITH WHOM THE DESIGN PROFESSIONAL HAS NOT ENTERED INTO CONTRACT.

SEAL:

REVISIONS		
0	ISSUED TO CLIENT	2026-06-01
1		
2		
3		
4		
5		
6		
7		

**721 ALDEBURY ROAD  
 SWEPT PATH ANALYSIS - PARKING  
 PASSENGER VEHICLE**

DRAWING NO: R0	SCALE: 1:300	DRAWN: CK
DESIGN SPEED: -	DESIGN VEHICLE: PASSENGER CAR	CHECKED: KM

**WATT**  
 Consulting Group  
 WATTCONSULTINGGROUP.COM

PROJECT NO: 4190.B01