

1 1140-1148 Esquimalt Village Co-Housing - Landscape Concept Plan  
Scale: 1:100

**MATERIALS LEGEND**

	Proposed Tree		Proposed bike ring (2 spaces ea.)		Property Line
	Existing Tree		Proposed Bench		Cross Section Reference Line
	Concrete		Proposed Planter		Retaining Wall - By Others
	Concrete Unit Pavers		Light Bollard		Concrete Stairs - By Others
	Planting beds		String Lights		Cedar Pergola
	SOD		Proposed Trellis		Tactile Indicator
	Poured in Place Rubber Surface		Natural stone		

**Recommended Nursery Stock**

Trees	Botanical Name	Common Name
TOTAL: 5	Amelanchier alnifolia	Saskatoon Serviceberry
<b>Large Shrubs</b>		
TOTAL: 43	Cornus stolonifera	Redtwig Dogwood
	Rhododendron macrophyllum	Pacific Rhododendron
	Taxus x media 'Hicksii'	Hicks Yew
	Vaccinium ovatum	Evergreen Huckleberry
<b>Medium Shrubs</b>		
TOTAL: 63	Cistus x hybridus	White Rockrose
	Hydrangea macrophylla 'Lanarth White'	Lanarth White Hydrangea
	Vaccinium corymbosum	Draper Blueberry
<b>Small Shrubs</b>		
TOTAL: 137	Azalea 'Snowbird'	Snowbird Azalea
	Gaitheria shallon	Salal
	Lavandula officinalis	English Lavender
	Mahonia nervosa	Low Oregon Grape
<b>Perennials, Annuals and Ferns</b>		
TOTAL: 86	Deschampsia caespitosa	Tufted Hair Grass
	Echinacea purpurea 'Magnus'	Purple Coneflower
	Fragaria chiloensis	Coastal Strawberry
	Polystichum munitum	Sword Fern
	Stipa tenuissima	Mexican Feather Grass
<b>Groundcovers</b>		
TOTAL: 39	Arcostaphylos uva ursi 'Vancouver Jade'	Vancouver Jade Kinnickinnick

1. All work to be completed to current CSLA Landscape Standards
2. All soft landscape to be irrigated with an automatic irrigation system



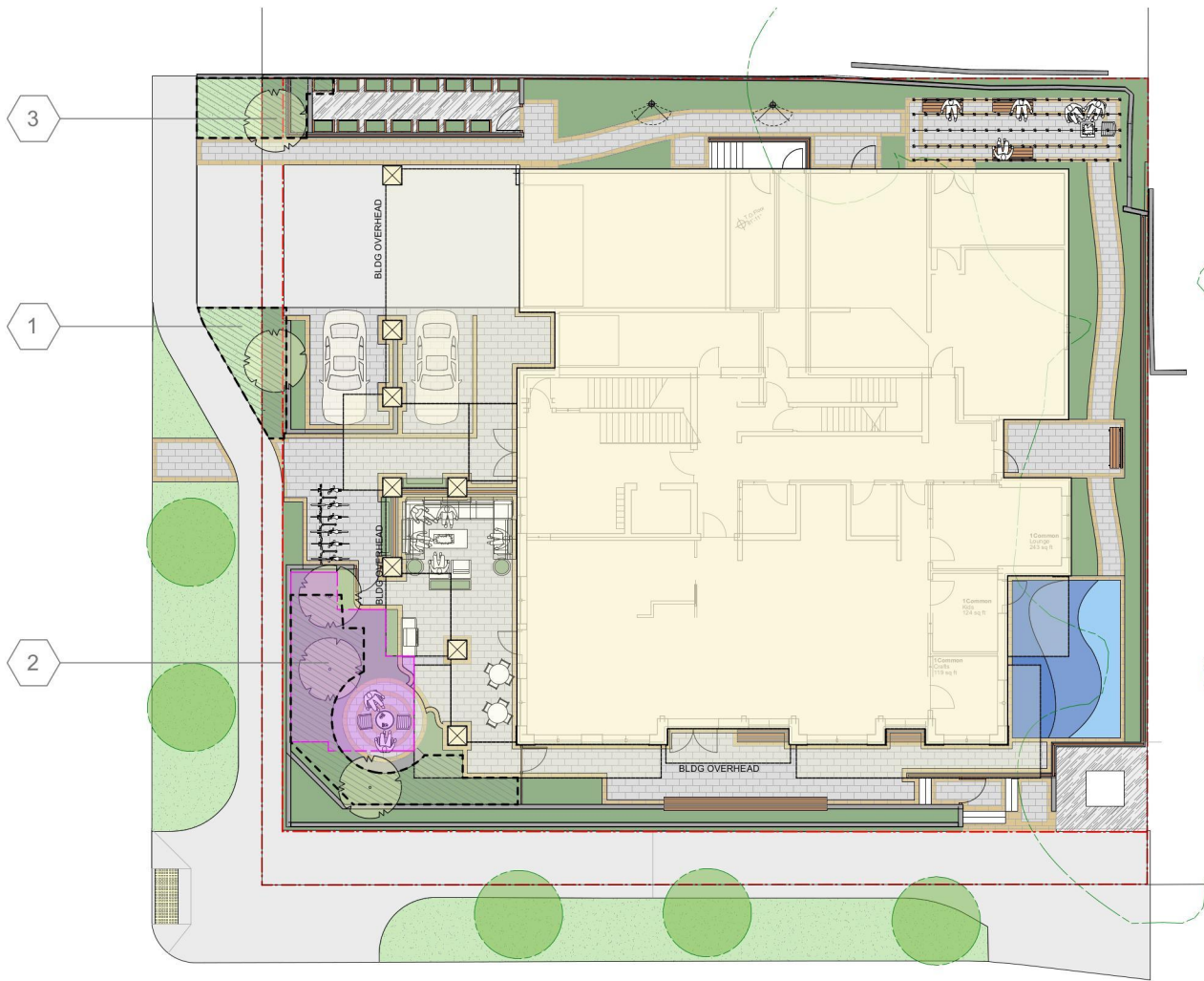
Shademaster Honey Locust Red Twig Dogwood Hicks Yew  
Issued for DP submission - Apr 02, 2026  
Issued for DP submission - Feb 03, 2026  
Issued for DP submission - Oct 15, 2025

# 1140-1148 Esquimalt Village Co-Housing - Concept Plan



Project No: 2522 Sept 18-25 #3-864 Queens Ave, Victoria B.C. V8T 1M5  
Phone: (250) 598-0105

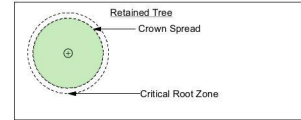
DP1/8



**MATERIALS LEGEND**

	Proposed Tree		Natural stone		Property Line
	Existing Tree		Proposed Trellis		Cross Section Reference Line
	Concrete		Proposed bike ring (2 spaces ea.)		Retaining Wall - By Others
	Concrete Unit Pavers		Proposed Bench		Concrete Stairs - By Others
	Planting beds		Proposed Planter		Cedar Pergola
	SOD		Soil Volume area Tag		Light Bollard
	Artificial Turf				String Lights
	Poured in Place Rubber Surface				Tactile Indicator
	Soil Volume area				
	Open Landscape Space				

**TREE MANAGEMENT LEGEND**



**Soil Volume Chart**

Planting Area ID	Area (M2)	Soil Volume multiplier*	Estimated Soil Volume	Replacement Tree Proposed			Soil Volume Required (M3)			
				#Small	Medium	#Large	Small	Medium	Large	Total
1	14.5	1	14.5	1			8	0	0	8
2	32.6	1	32.6	3			24	0	0	24
3	14.3	1	14.3	1			8	0	0	8



1 1140-1148 Esquimalt Village Co-Housing - Landscape Soil Volume Plan  
Scale: 1:100

# 1140-1148 Esquimalt Village Co-Housing - Soil Volume

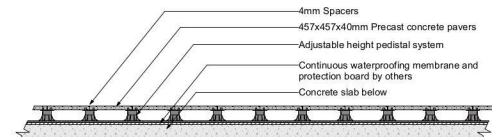


Project No: 2522 Sept 18-25

#3-864 Queens Ave, Victoria B.C. V8T 1M5  
Phone: (250) 598-0105

DP2/8

Issued for DP submission - Apr 02, 2026  
Issued for DP submission - Feb 03, 2026  
Issued for DP submission - Oct 15, 2025



Texada slab paver - By Belgard



SIZE: 457 x 457 x 40mm



Natural

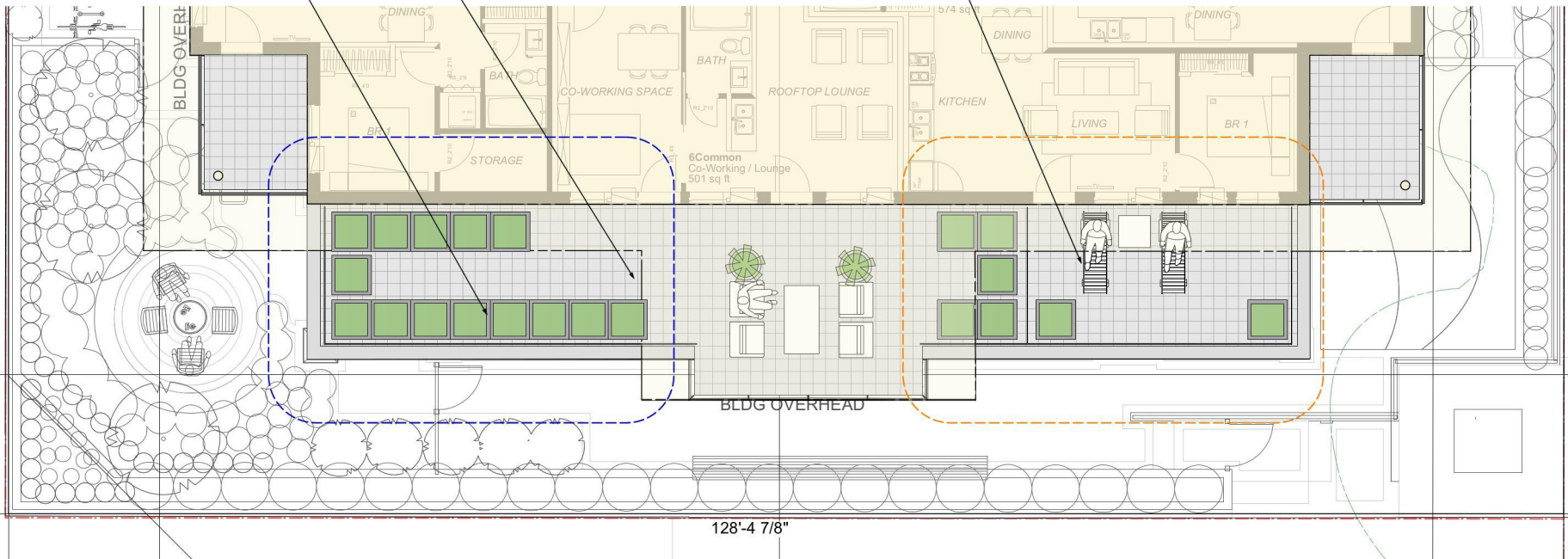
- Concrete pavers on pedestal notes:
1. This detail to be read in conjunction with landscape specifications and belgard pedestal installation details.
  2. DO NOT compact pavers on pedestals.
  3. Pavers on pedestals to be installed with 4mm spacers between each unit paver.
  4. Paver installation must be completed in accordance with landscape specifications and belgard standard details.
  5. See landscape Layout plan for proposed colour and pattern layouts
  6. Pavers to be installed level

7 Concrete unit pavers on pedestal standard detail  
D1 1:50

Concrete pavers on pedestal system  
(Typical for rooftop patios)

Rooftop community vegetable garden planter

Private Patio



MATERIALS LEGEND

- Concrete Unit Pavers On Pedestals
- Planting beds
- Property Line
- Aluminum Planter



Issued for DP submission - Apr 02, 2026  
Issued for DP submission - Feb 03, 2026  
Issued for DP submission - Oct 15, 2025

DP3/8

1 1140-1148 Esquimalt Village Co-Housing - Landscape Rooftop Concept Plan  
Scale: 1:50

# 1140-1148 Esquimalt Village Co-Housing- Roof Concept



Project No: 2522 Sept 18-25

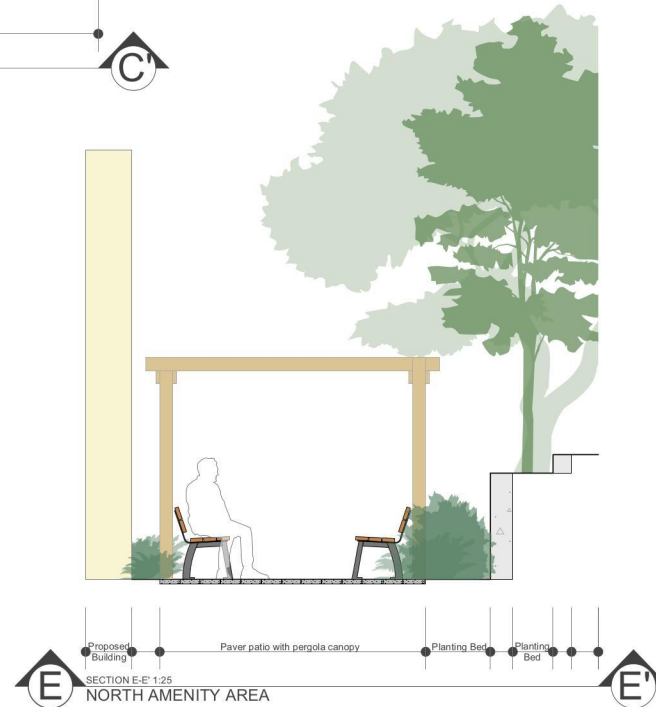
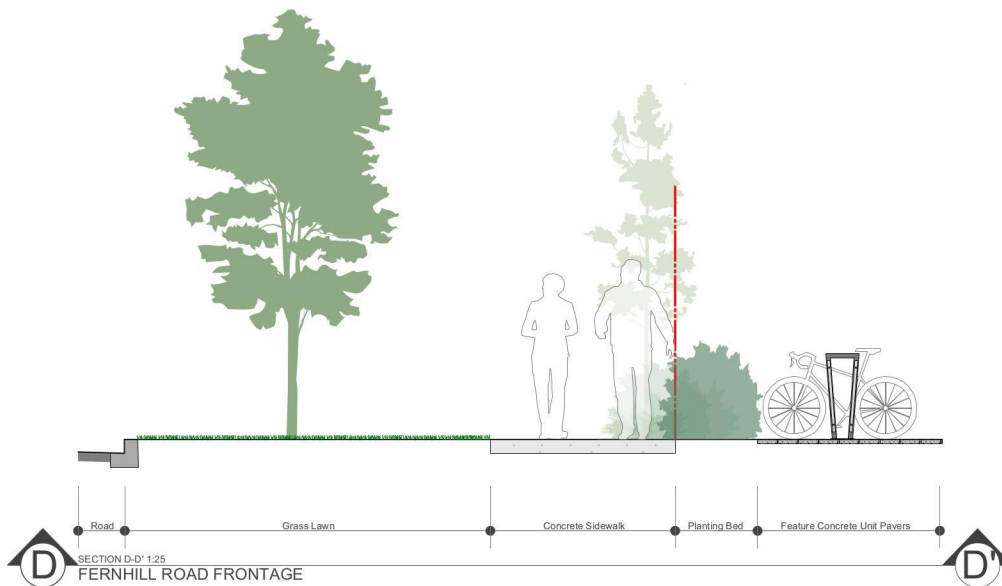
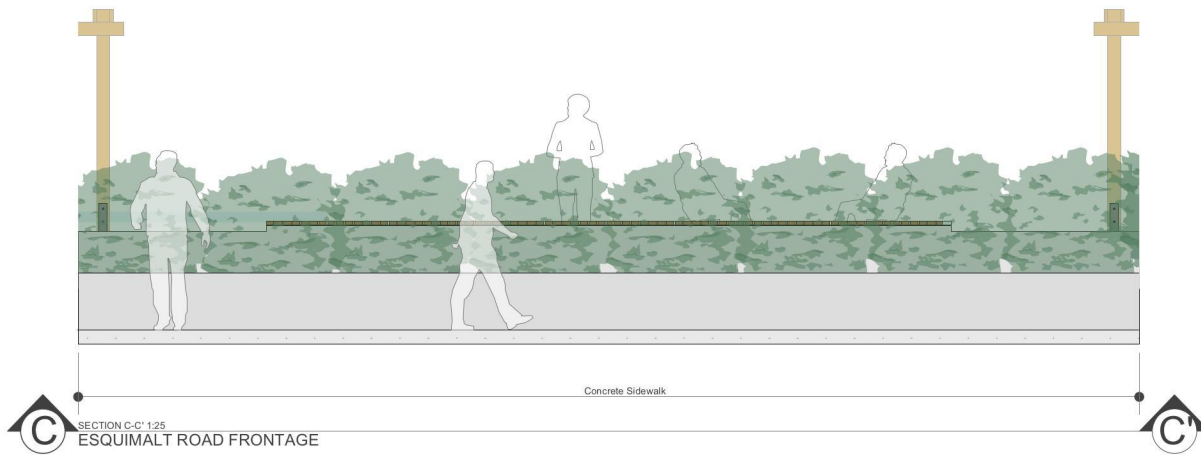
#3-864 Queens Ave, Victoria B.C. V8T 1M5  
Phone: (250) 598-0105



Issued for DP submission - Apr 02, 2026  
 Issued for DP submission - Feb 03, 2026  
 Issued for DP submission - Oct 15, 2025

DP4/8

# 1140-1148 Esquimalt Village - Landscape Sections



Issued for DP submission - Apr 02, 2026  
 Issued for DP submission - Feb 03, 2026  
 Issued for DP submission - Oct 15, 2025

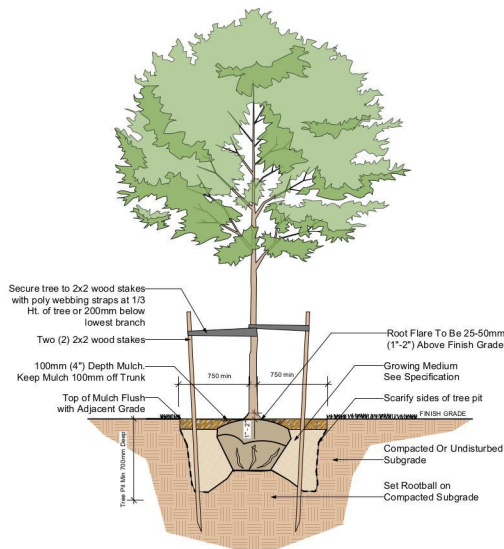
DP5/8

# 1140-1148 Esquimalt Village - Landscape Sections

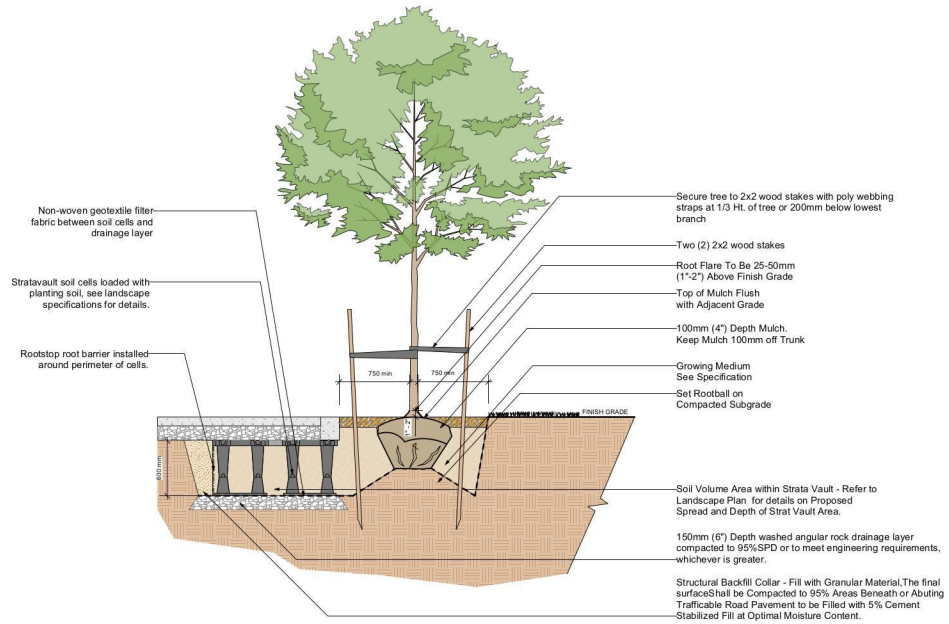


Project No: 2522 Sept 18-25

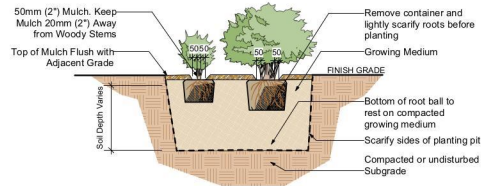
#3-864 Queens Ave, Victoria B.C. V8T 1M5  
 Phone: (250) 598-0105



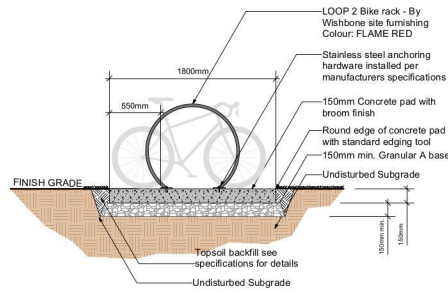
1 D1 Typical Deciduous Tree Planting Detail  
Scale: 1:25



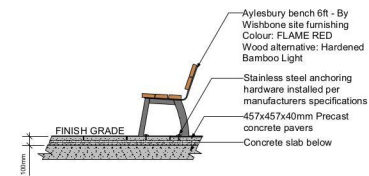
2 D1 Tree planting with stratavault soil cells Detail - Single layer  
Scale: 1:25



3 D1 Typical Shrub Planting Detail  
Scale: 1:25

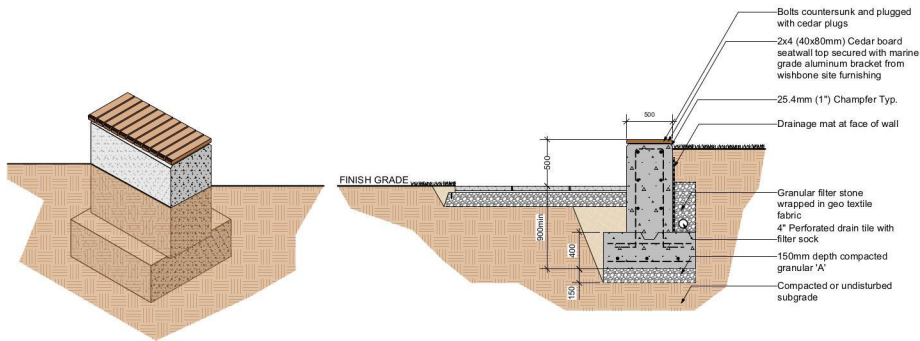


4 D1 Bike Ring On Concrete Pad  
Scale: 1:25

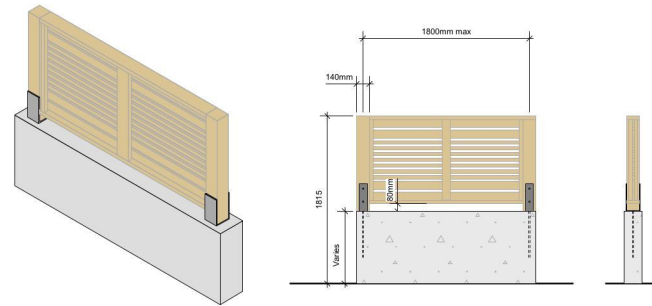


5 D1 Bench - By Washbone site furnishing  
Scale: 1:25

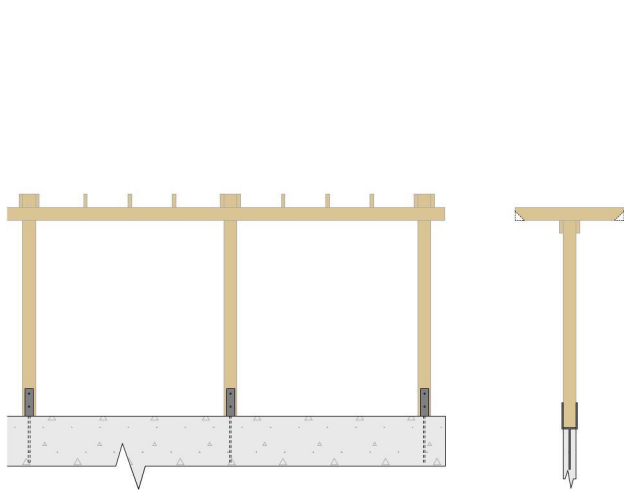
# 1140-1148 Esquimalt Village - Landscape Details



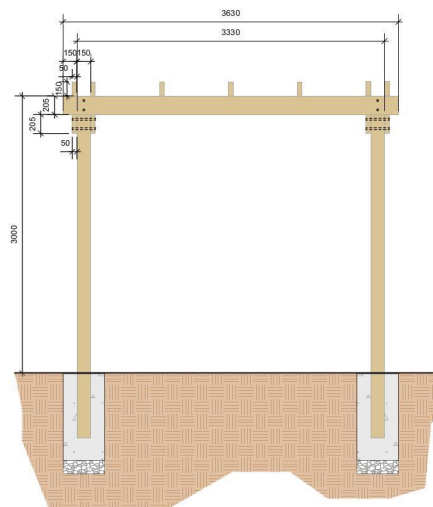
6 500mm Ht. Concrete seat wall with wood top - Sandblast finish  
D2 Scale: 1:50



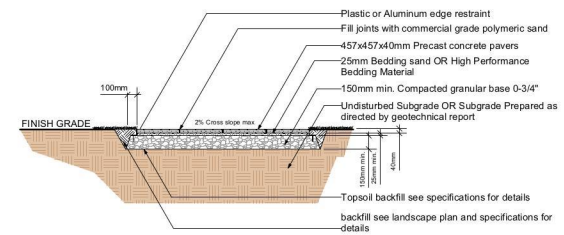
7 1.8m Ht. Wood Privacy Fence  
D2 Scale: 1:25



8 Wood Trellis mounted to retaining wall  
D2 Scale: 1:25



9 Wood Pergola  
D2 Scale: 1:25



10 Precast concrete unit pavers on compacted subgrade  
D2 Scale: 1:25

Issued for DP submission - Apr 02, 2026  
Issued for DP submission - Feb 03, 2026  
Issued for DP submission - Oct 15, 2025

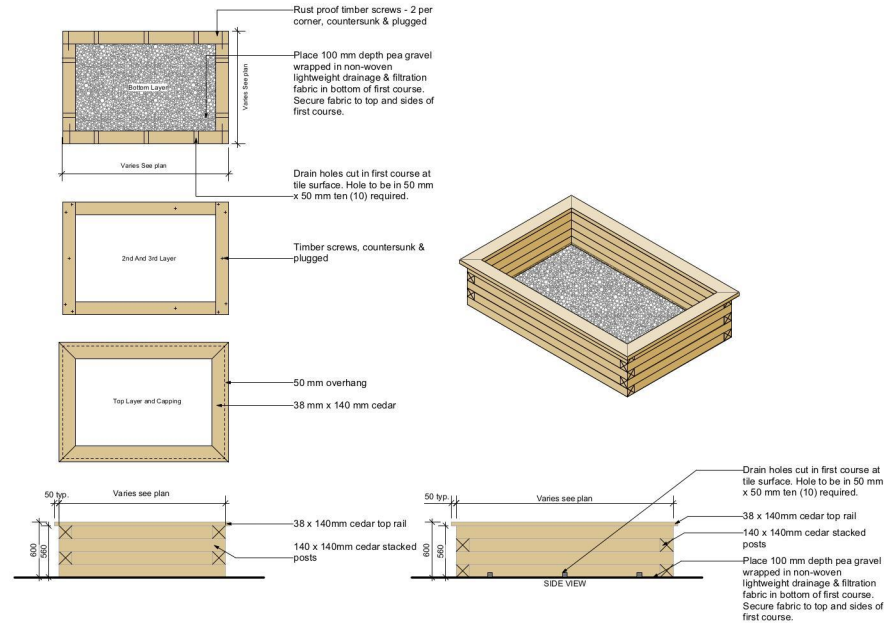
DP7/8

# 1140-1148 Esquimalt Village - Landscape Details

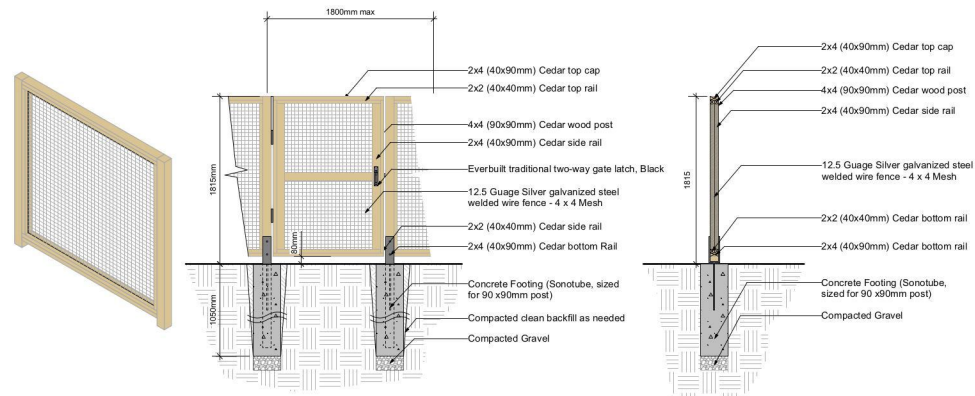


Project No: 2522 Sept 18-25

#3-864 Queens Ave, Victoria B.C. V8T 1M5  
Phone: (250) 598-0105



11 Typical Community planter box detail  
Scale: 1:25



12 1.8m Ht Wood and steel mesh garden gate with 4x4 post  
Scale: 1:25

Issued for DP submission - Apr 02, 2026  
Issued for DP submission - Feb 03, 2026  
Issued for DP submission - Oct 15, 2025

DP8/8

# 1140-1148 Esquimalt Village - Landscape Details



Project No: 2522 Sept 18-25

#3-864 Queens Ave, Victoria B.C. V8T 1M5  
Phone: (250) 598-0105