

**530, 534, & 538 West Bay Terrace
and 877 & 879 Dunsmuir Road**

**Development Permit
Application**



1. Site Location

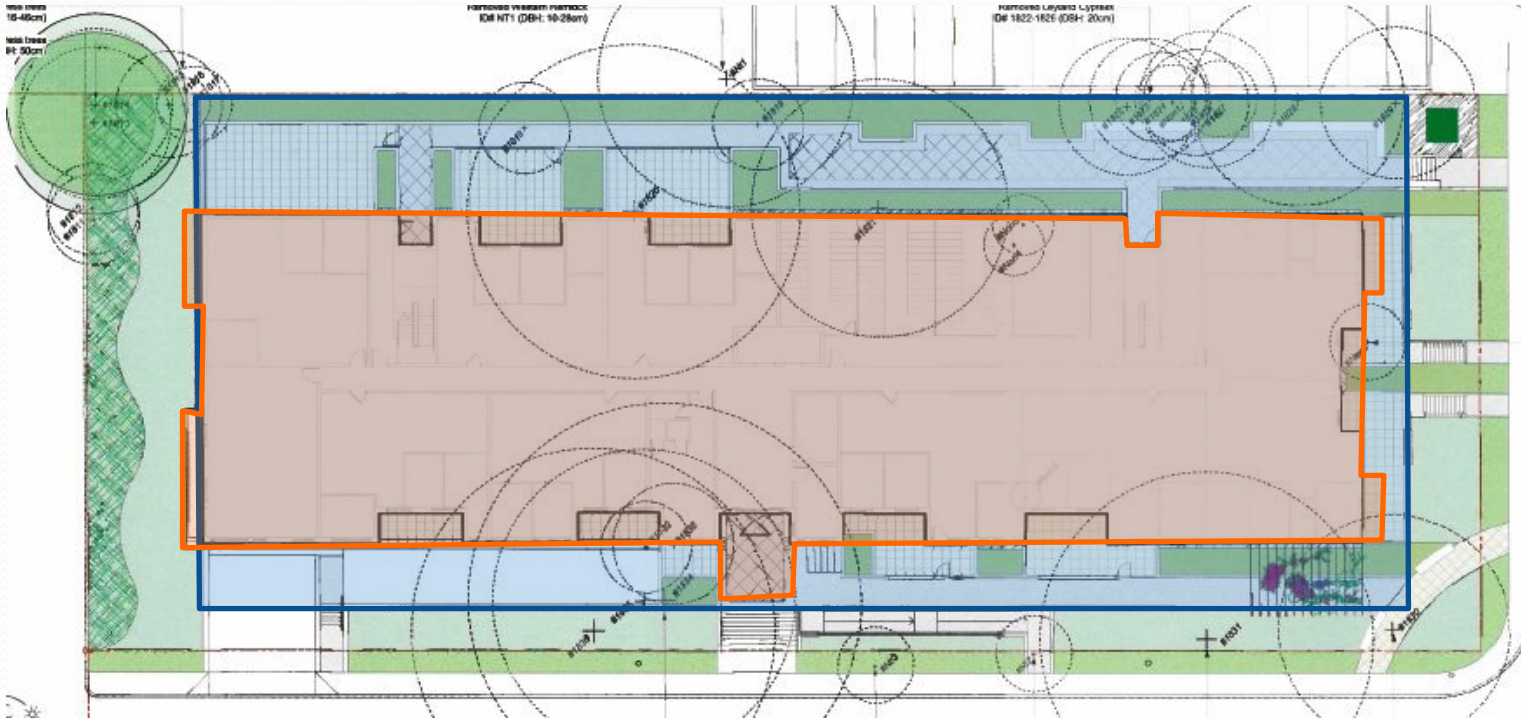


2. Proposal



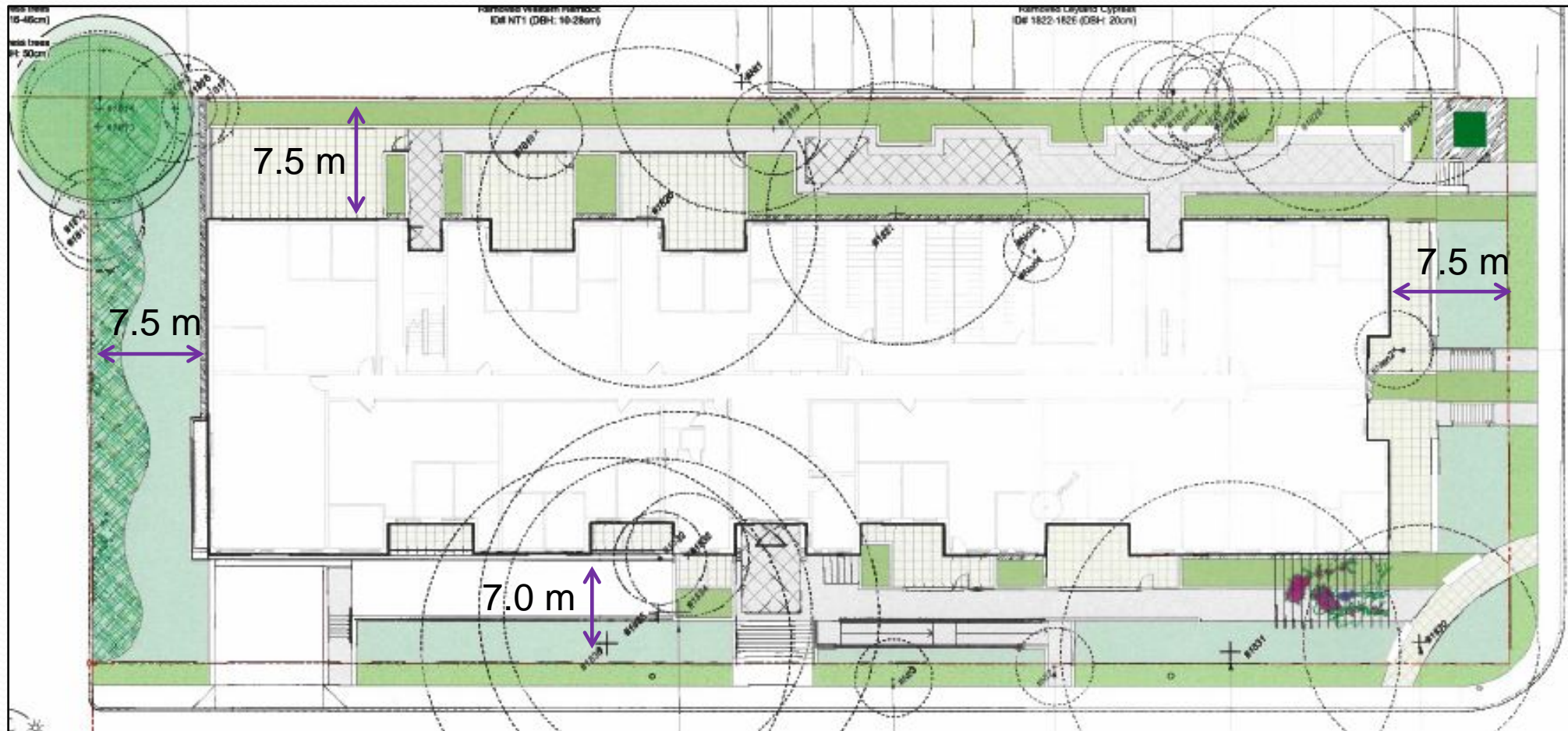
- 105 residential apartments
- Floor Area Ratio of 1.9

3. Zoning Regulations - Lot Coverage



Parkade Lot Coverage: 80%
Building Lot Coverage: 51%

4. Zoning Regulations - Setbacks

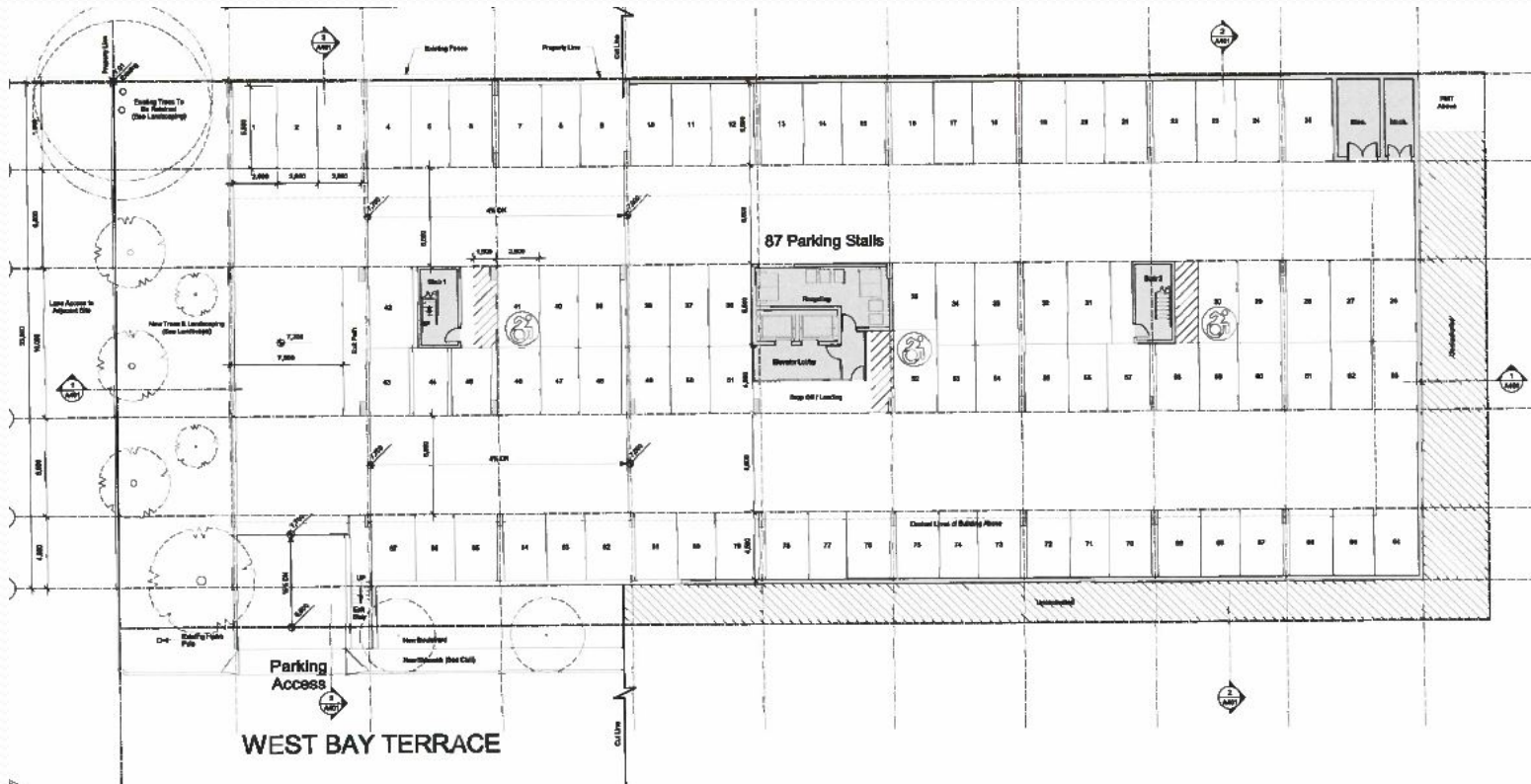


5. Zoning Regulations - Height



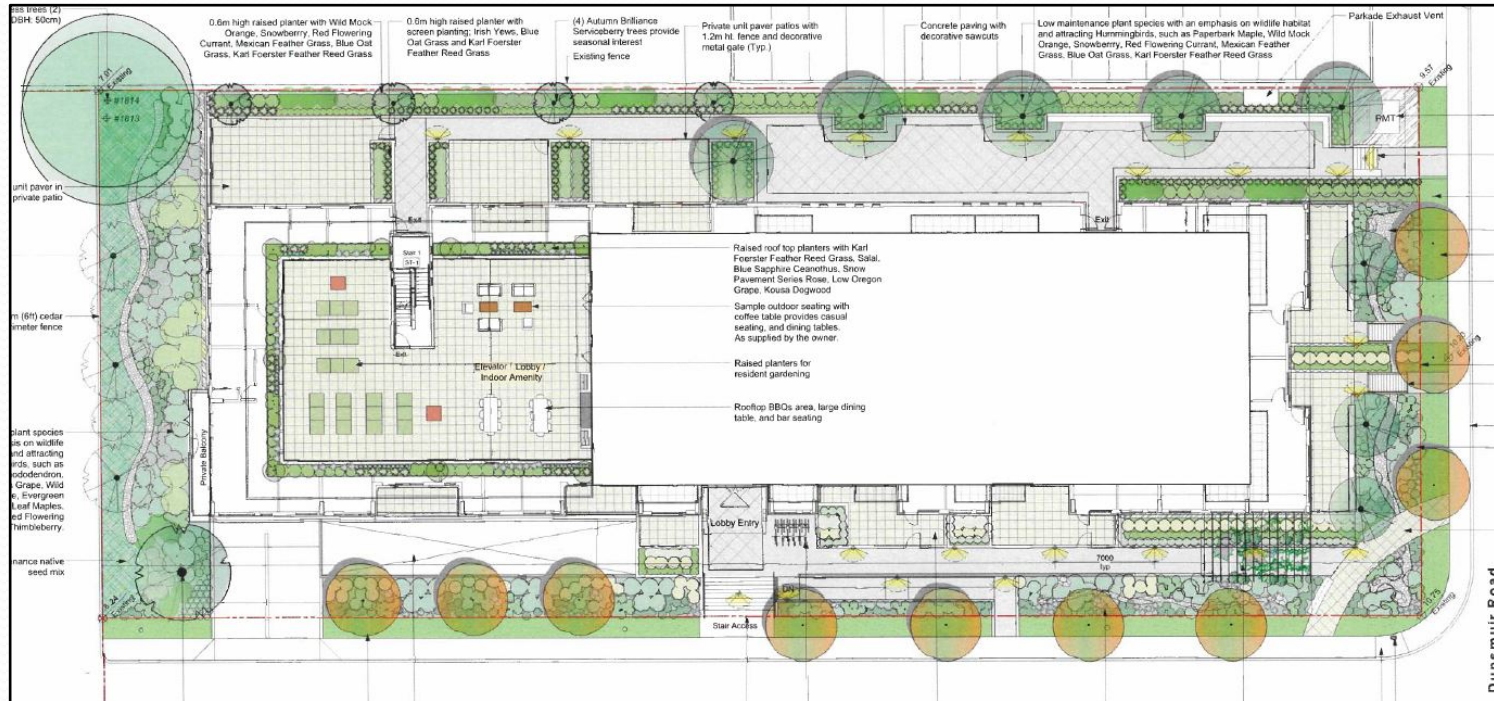
21 metres
6 Storeys

6. Zoning Regulations - Parking



- 87 parking spaces
 - Includes 7 visitor spaces
- 0.82 parking spaces per dwelling unit

7. Landscaping



- 2 retained Cypress trees
- 32 new trees
 - Proposed species: Vine Maple, Paperback Maple, Big Leaf Maple, October Glory Red Maple, Red Aider, Autumn Brilliance Serviceberry and Purple Leaf Plum
 - Including 7 boulevard trees
- Public Right of Way on the corner of Dunsmuir Road and West Bay Terrace

