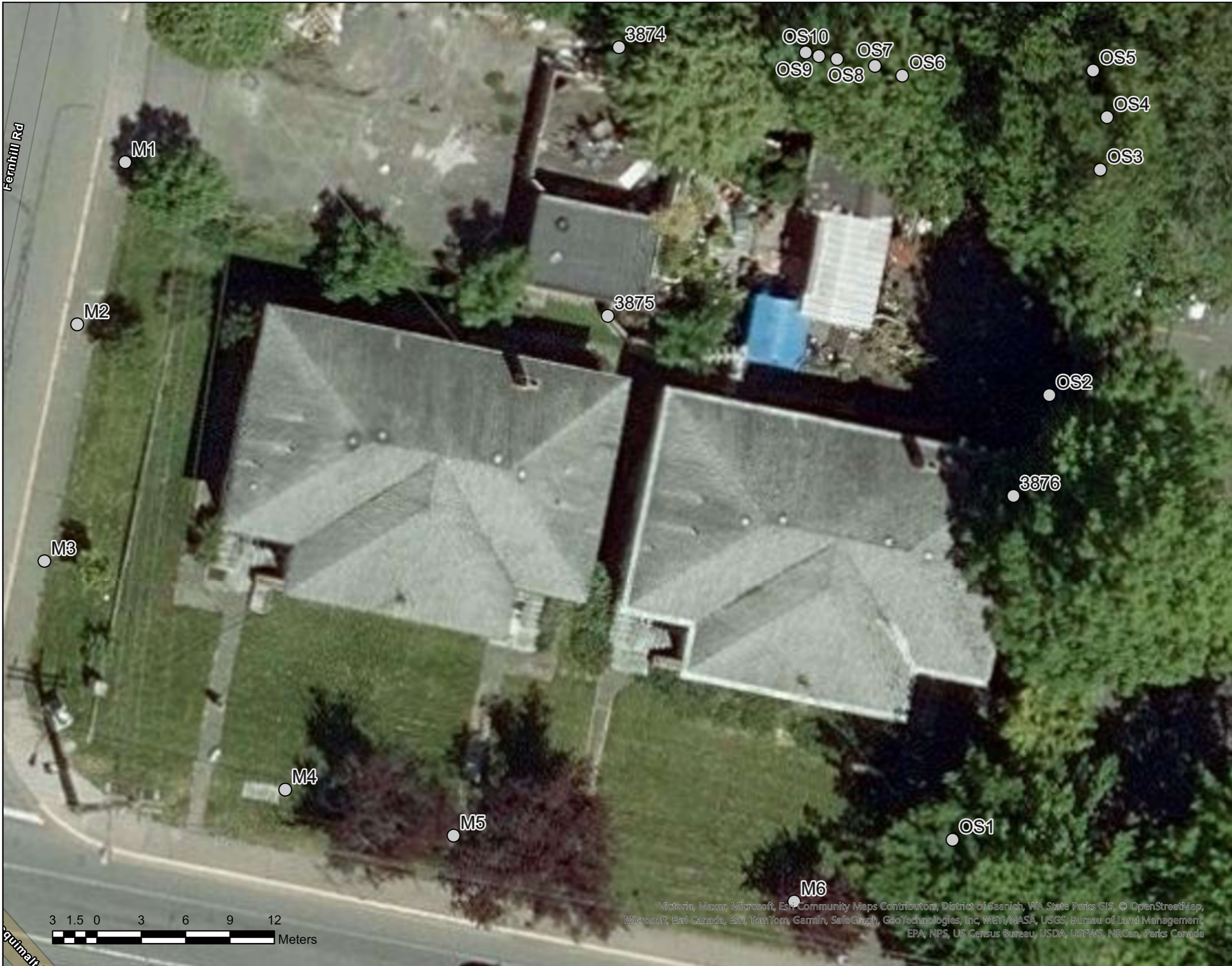


# 1140 - 1148 Esquimalt Road, Esquimalt BC

## Legend



○ Tree Locations



Tag #	Surveyed (Yes/No)	Location (On, Off, Shared, Municipal)	Bylaw protected (Yes/No)	Common Name	Botanical Name	DBH (cm)	Crown Diameter (m)	Crown Radius (m)	Critical Root Zone Radius (m)	Health Condition	Structural Condition	Relative Tolerance	On-site Retention Suitability	General Field Observations & Remarks	Tree Retention & Location Comments	Retention Status
3874	Y	ON	Y	Crorkscrew Willow	<i>Salix matsudana</i>	28, 35	10	5.00	6.22	Fair to Good	Fair to Poor	Moderate		Canopy weighted to south, included union at base, lean to the south, materials over root zone, irregular unions, deadwood		
3875	Y	ON	N	Laburnum sp.	<i>Laburnum sp.</i>	18	5	2.50	2.16	Fair	Fair	Moderate		Multiple stem union at 2m, small deadwood, difficult to access		
M1	Y	M	M	Green Ash	<i>Fraxinus pennsylvanica</i>	10,10,9	6	3.00	2.14	Fair to Good	Fair to Good	Good		Multiple stems at base, mechanical wound on northern most stems, raised asphalt to the north		
M2	Y	M	M	Magnolia sp.	<i>Magnolia sp.</i>	10	4	2.00	1.20	Fair to Good	Fair to Good	Moderate		Mechanical wound above root collar and at 0.6m, response growth around wounds, small deadwood		
M3	Y	M	M	Magnolia sp.	<i>Magnolia sp.</i>	11 below unions	3	1.50	1.32	Fair to Good	Fair to Good	Moderate		Mechanical wound on southern side at 0.5m, some health stress		
M4	Y	M	M	Crabapple	<i>Malus sp.</i>	12 below union	5	2.50	1.44	Good	Fair to Good	Moderate		Lower trunk protection		
M5	Y	M	M	Crabapple	<i>Malus sp.</i>	12	5	2.50	1.44	Good	Fair to Good	Moderate		Lower trunk protection		
M6	Y	M	M	Purple Leaf Plum	<i>Prunus cerasifera</i>	17,13,9	7	3.50	3.62	Fair to Good	Fair	Moderate		Epicormic growth, some twig dieback, included union at primary union, slight lean to the north.		
OS1	Y	OFF	Y	Field Elm	<i>Ulmus minor</i>	~45,40	15	7.50	6.90	Fair	Fair to Poor	Good		Two stems with potential included union at base, historically hydro pruned, branches resting on hydro/tel lines, ivy around majority of tree, stem to the south topped at ~10 meters, canopy weighted to the north, driveway heaving to the west potential for roots, canopy as low as ~10m. Possibly shared, likely offsite.		
3876	Y	SHARED (ON-OFF)	Y	Green Ash	<i>Fraxinus pennsylvanica</i>	85	16	8.00	8.50	Fair to Poor	Fair to Poor	Good		Heaving of adjacent asphalt potential for larger roots, cavity at base with decay, recommend level 3 TRA, potentially shared, canopy over hangs site by 6m, historical large pruning wounds in upper canopy with decay.		
OS2	Y	OFF	N	Field Elm	<i>Ulmus minor</i>	15	5	2.50	1.50	Fair to Good	Fair to Good	Good		Rooted on slope between utility pole and stump, canopy extends over site 5m, canopy as low as 4m		
OS3	Y	OFF	Y	Green Ash	<i>Fraxinus pennsylvanica</i>	~50	16	8.00	5.00	Fair	Fair to Poor	Good		Likely utility pruned on the eastern side, canopy overhangs the property 8m as low as 10m, retaining wall 1m west 1m tall, large pruning wounds on southern stem with potential internal decay.		
OS4	Y	OFF	Y	Field Elm	<i>Ulmus minor</i>	~20,30,40,60	10	5.00	10.20	Fair to Good	Fair	Good		Rooted above retaining wall to the southwest, canopy weighted to the west, ivy around base and lower canopy, phototropic lean to the west, likely suppressed by adjacent trees, potentially included bark between stems.		
OS5	Y	OFF	Y	Field Elm	<i>Ulmus minor</i>	70	16	8.00	7.00	Fair to Good	Fair	Good		Rooted above retaining wall to the southwest/south, likely hydro pruned to the east, canopy likely over hangs site, ivy around base		
OS6	Y	OFF	N	Green Ash	<i>Fraxinus pennsylvanica</i>	14	5	2.50	1.40	Fair	Fair	Good		Rooted on top of retaining wall, canopy weight over property, suppressed by adjacent trees, possibly shared.		
OS7	Y	OFF	N	Field Elm	<i>Ulmus minor</i>	16	7	3.50	1.60	Fair	Fair	Good		Rooted above retaining wall, suppressed by adjacent trees, 2m canopy over hang, possibly shared		
OS8	Y	OFF	Y	Green Ash	<i>Fraxinus pennsylvanica</i>	~25,18	12	6.00	3.58	Fair to Good	Fair	Good		Canopy over hangs property by 7m, rooted above retaining wall, possibly shared, canopy weighted to the south.		
OS9	Y	OFF	N	Green Ash	<i>Fraxinus pennsylvanica</i>	23	8	4.00	2.30	Fair	Fair	Good		Rooted above retaining wall, canopy weighted to the west and northwest, suppressed by adjacent trees		
OS10	Y	OFF	N	Green Ash	<i>Fraxinus pennsylvanica</i>	18,10	8	4.00	2.40	Fair	Fair	Good		Canopy weighted to the south west, canopy over hangs site by 7m, rooted above retaining wall.		