

Katikati

Haiku Walkway - North Island, New Zealand



Posted on:
Trip Advisor
All Trails
New Zealand.com
Haiku Foundation
WesternBay.govt.nz





Japanese 5-7-5

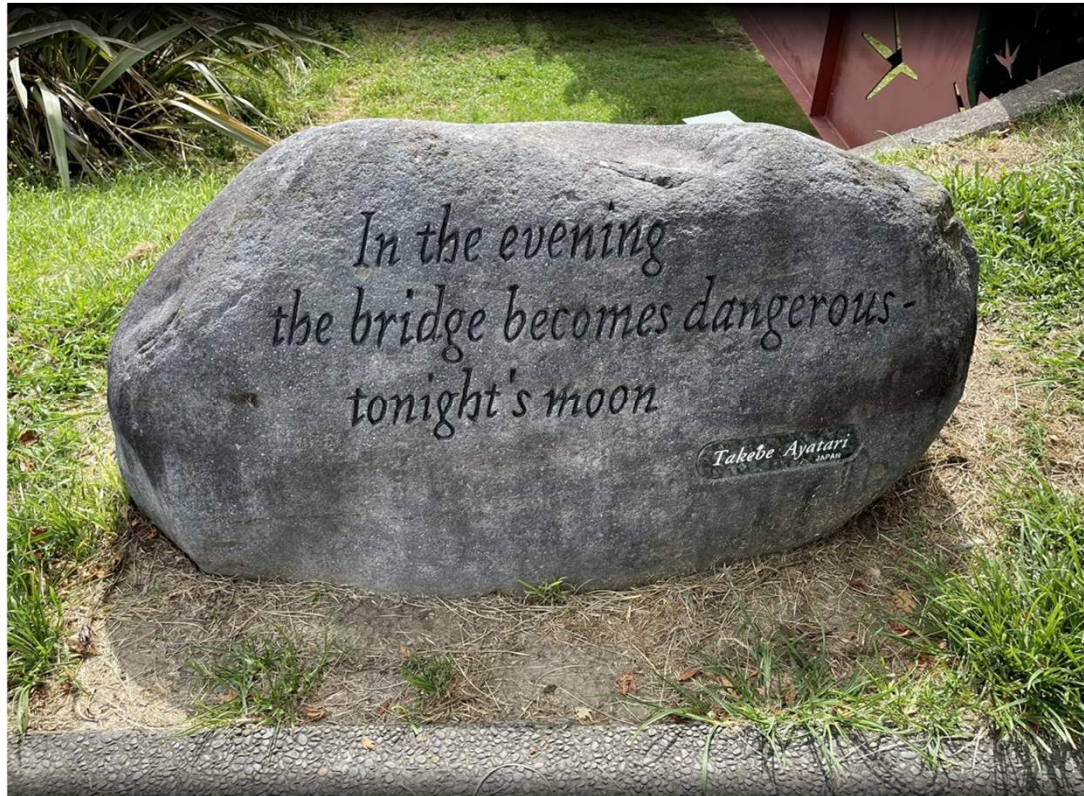
furu ike ya / kawazu tobikomu / mizu no oto
an ancient pond / a frog jumps in / the splash of water

Modern English

clouds seen
through clouds
seen through

Modern English

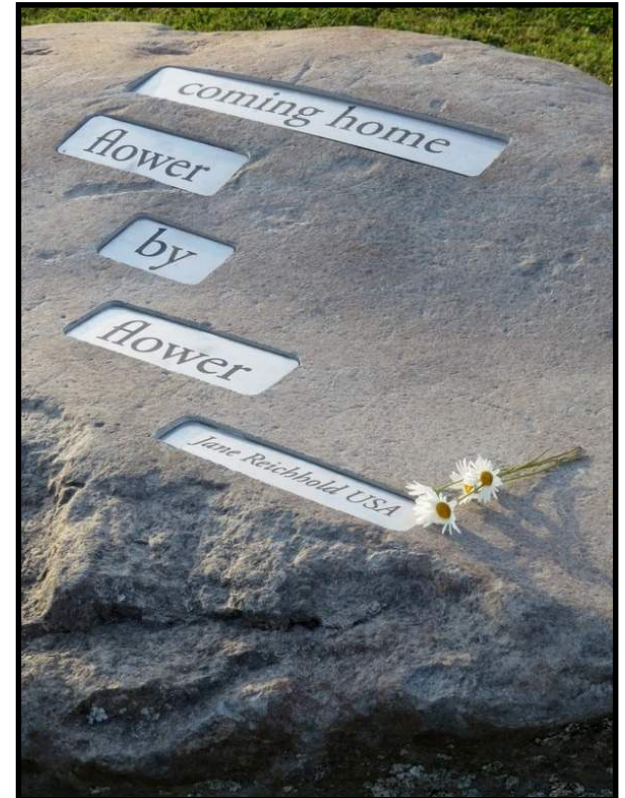
Rainy travel days,
nourishing memories
of red begonias.



Interpretation is for the reader



Alternate display method - steel plate inscription

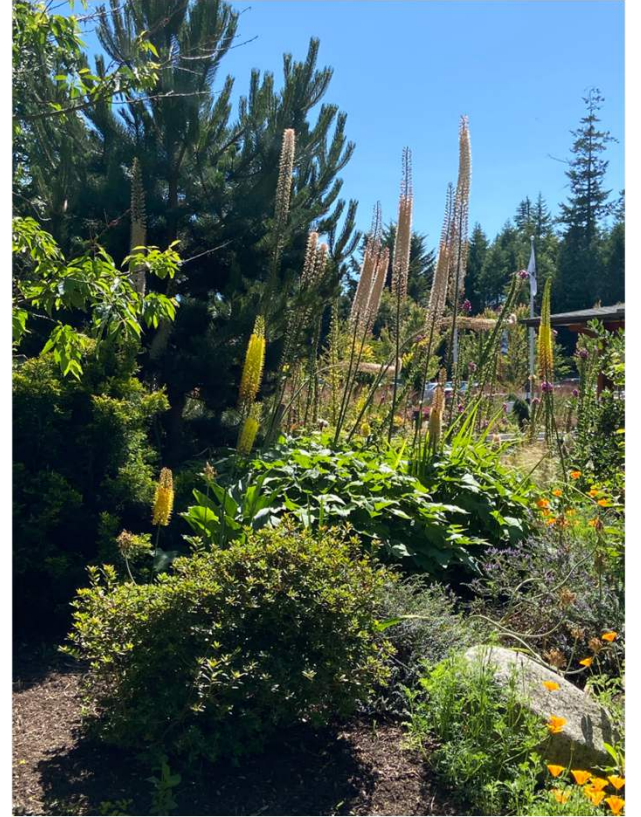


Gorge Kinsman Park & the Japanese Garden





Tranquility - an invitation to reflection



not so tranquil?

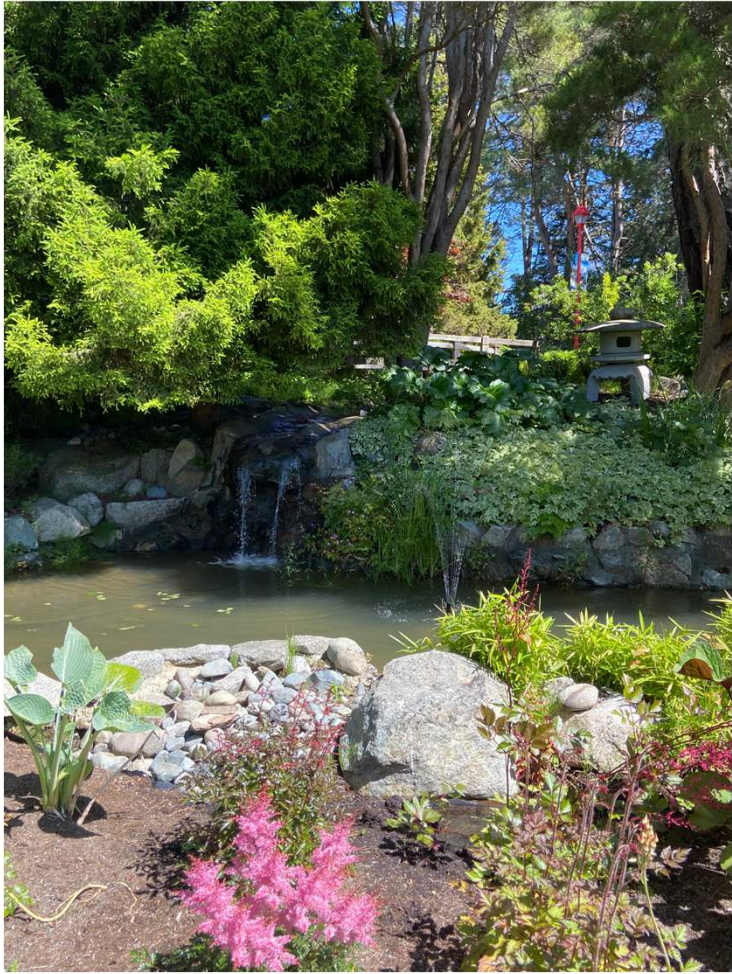


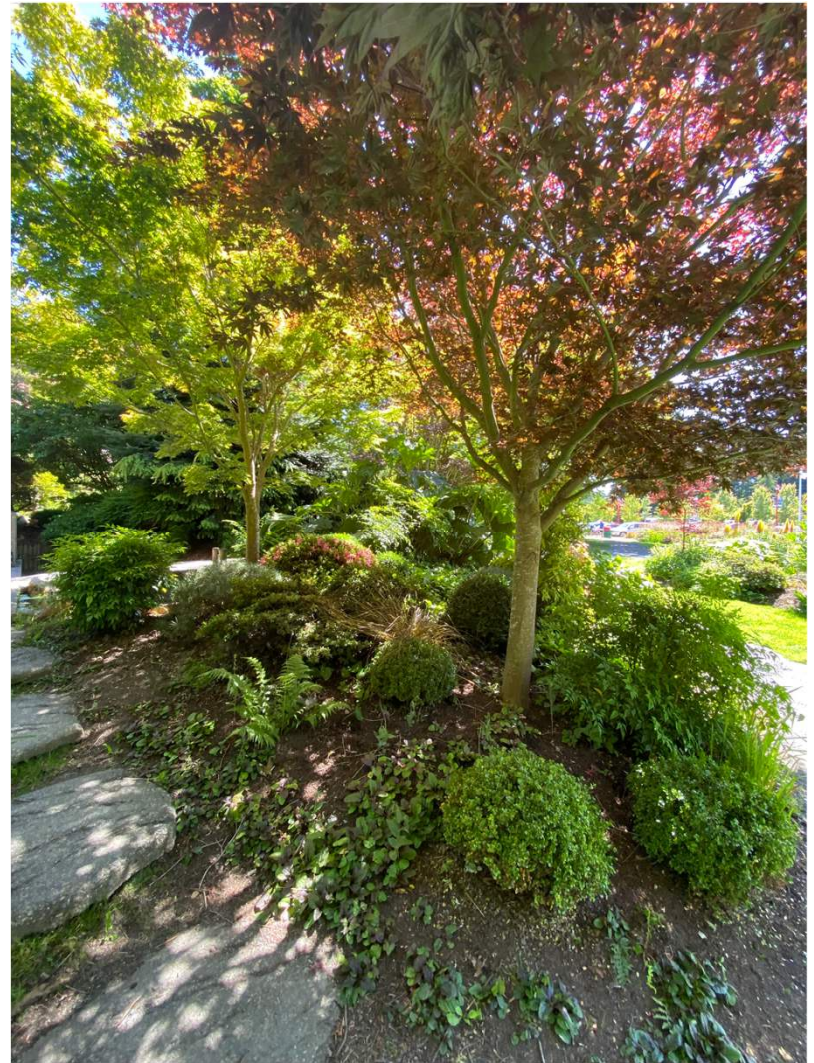
perhaps



There are numerous sites where haiku might be positioned







Considerations

commitment to proposal
gathering the poems
display mode
financing
continuity

Process

gathering the poems
prepare items for display
payments
continuity process

