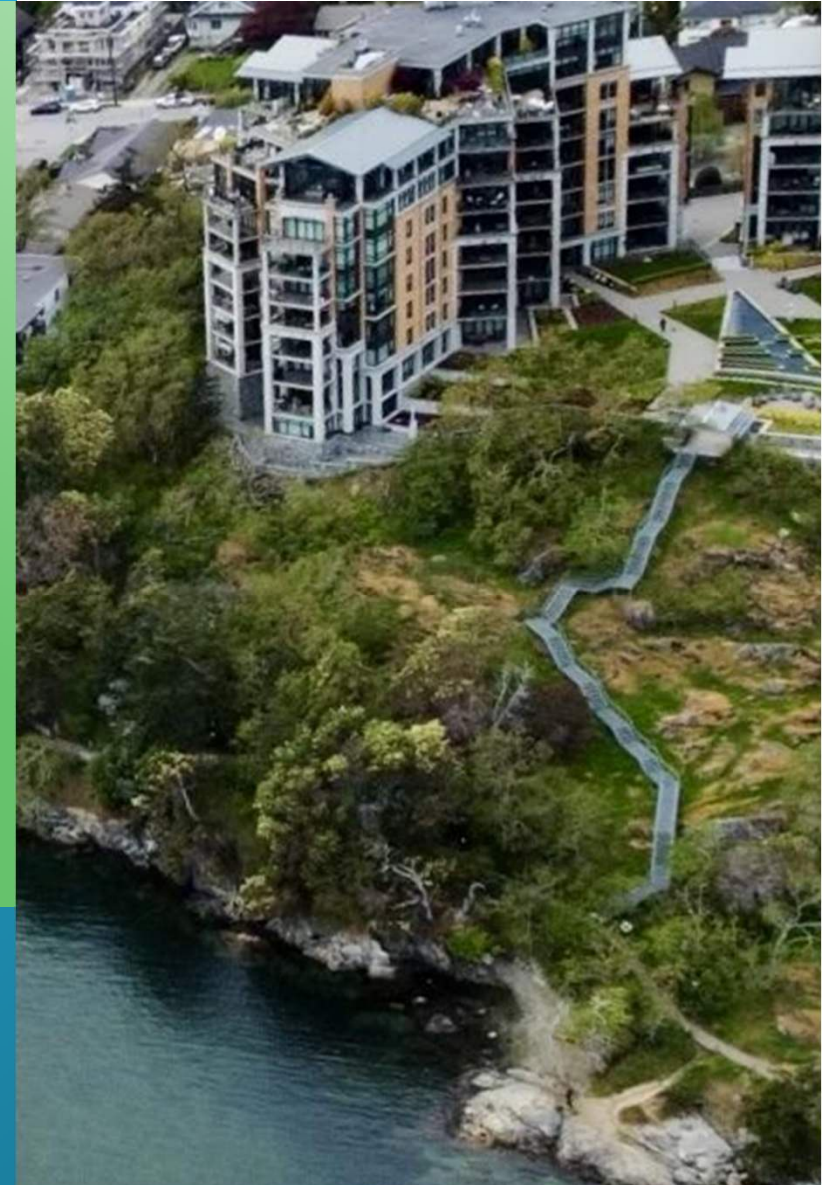


Proposal for the New West Bay INTERPRETIVE PLATFORM & POLLINATOR PARK

Presentation to:

Esquimalt's Environment, Parks &
Recreation Advisory Committee



Rationale:

- Esquimalt/West Bay experiencing high development, growth & increasing density.





Rationale:

- Much of increased growth is apartment and condo living.
- Growing need for new parks and green spaces.
- Challenge for Township to meet growing need.
- Imagine if we could meet need with no additional land purchase cost.
- We believe our proposal will help the Township meet that need.



IPPP Proposal:

**West Bay Residents Association +
Habitat Acquisition Trust**

propose Township establish an

INTERPRETIVE PLATFORM AND POLLINATOR PARK (IPPP)

at the south end of Garret Place, off Dunsmuir
Road, overlooking the MCA.



IPPP Proposal:

Introduce residents/visitors to history and ecology of MCA

- Matson Conservation Area (MCA) is a 2.4-acre protected urban conservation site situated along West Bay's shoreline.
- Last remaining Garry Oak woodland/meadow on the inner harbour.





IPPP Proposal:

Protect fragile ecosystem

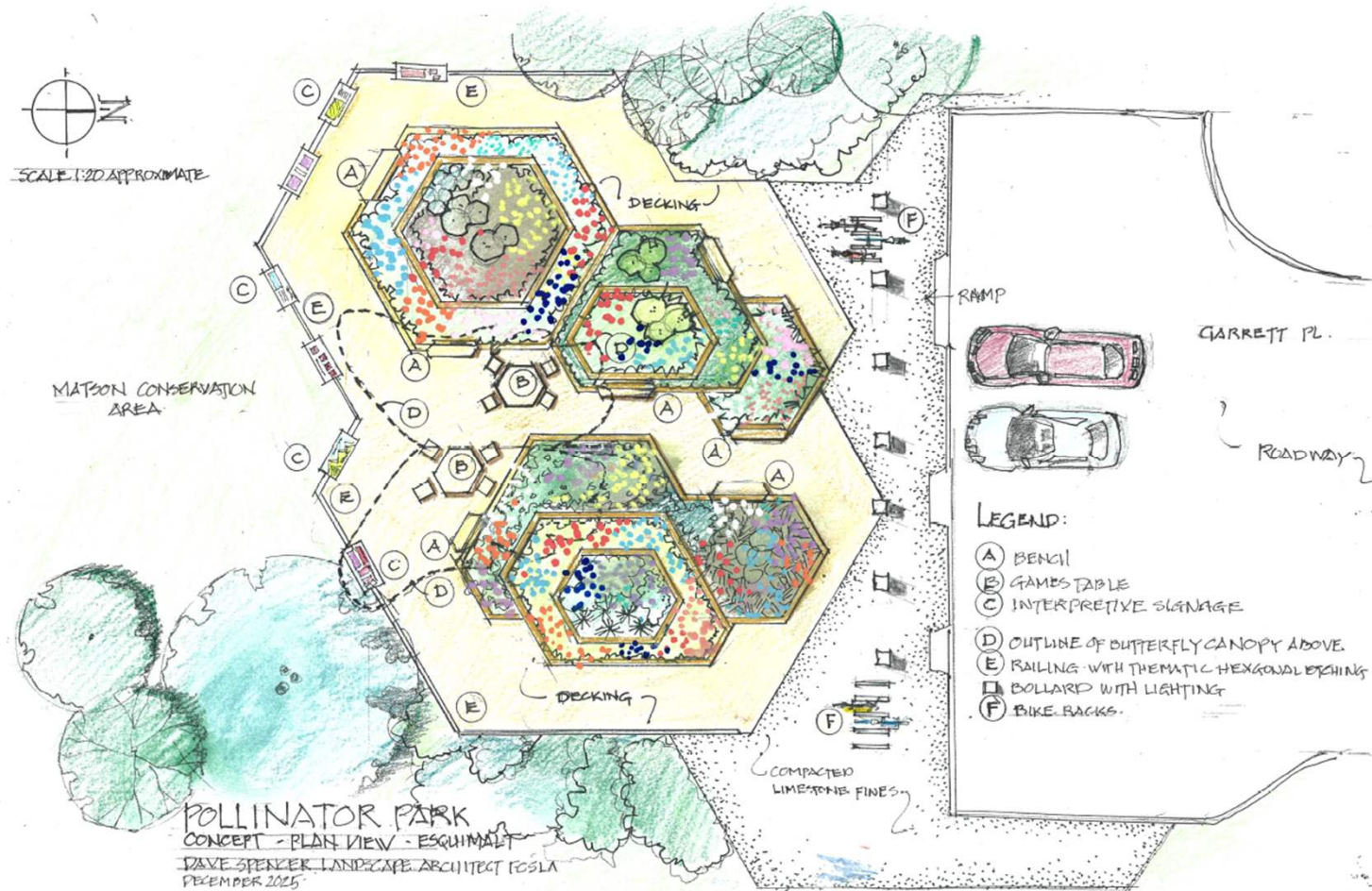
- MCA has a fragile ecosystem.
- Foot traffic throughout the MCA is strongly discouraged.
- Rich history - indigenous roots, community conservation and land donation, current day restoration and management.



IPP Proposal:

- IPPP will enhance public education, foster ecological awareness and provide residents/visitors with an alternative park area to sit, learn and enjoy nature.
- All while deterring foot traffic on the MCA itself.
- The boulevard land where the IPPP will be situated is owned by the Township.

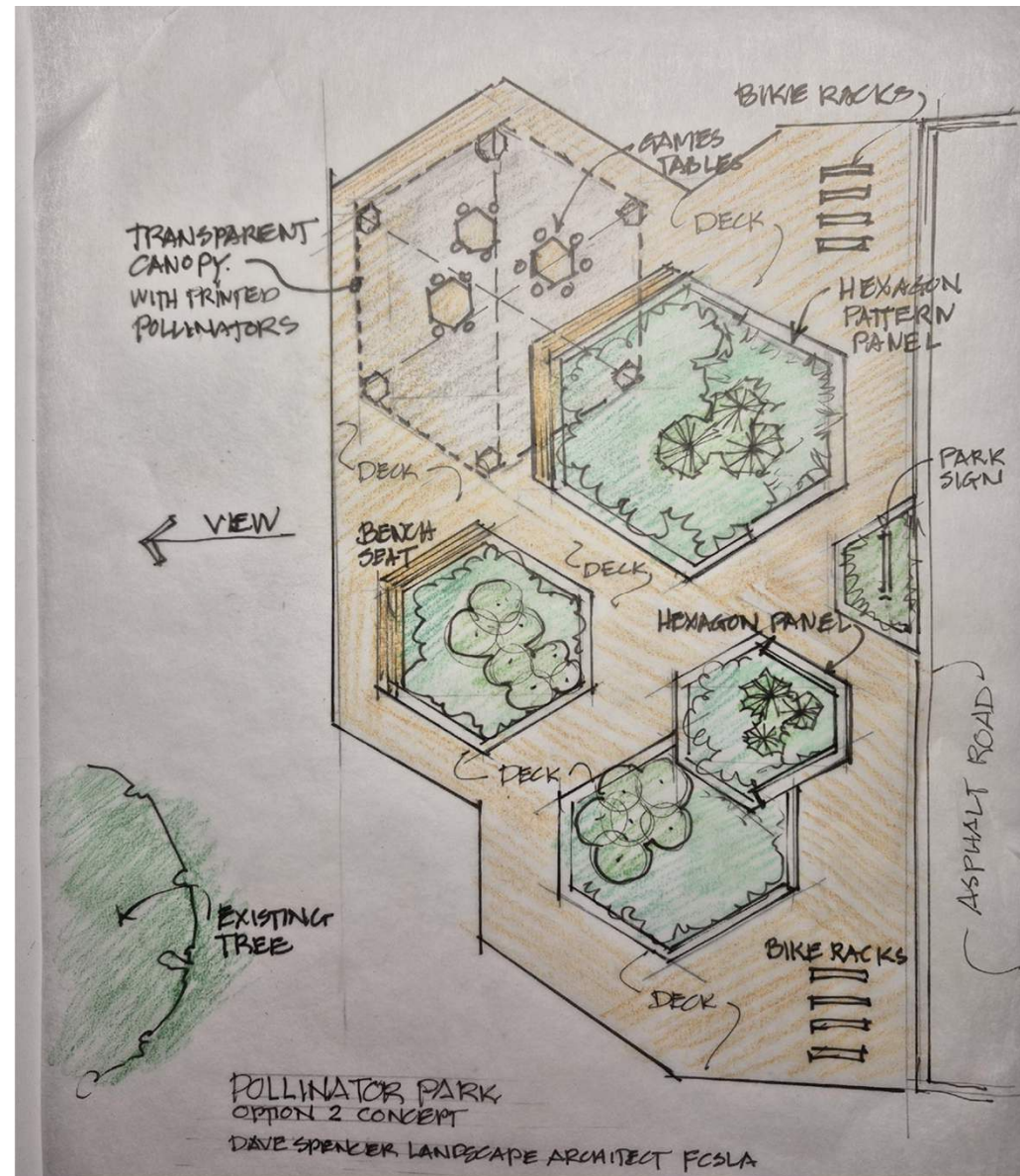
IPPP Original Concept Drawing



IPPP

Current Concept Drawing

- Scaled back version of original
- Reclaimed footage of lower roadway to add to park space
- Interpretive signage, seating areas and raised garden areas
- Sorting and storage area for MCA mgt work
- Small gate to MCA forest area
- Pollinator plantings that are indigenous to the area
- Wheel chair assessible





Concept and location:

- Community green space not being utilized
- Positioned to enhance connectivity within local ecological corridors
- Offers a more natural infrastructure solution that minimizes infrastructure costs
- Offers a high elevation seating and learning area that connects visitors to nature
- Community oasis that captures foot traffic from surrounding neighbourhood and West Bay Walkway

Consultations and Feedback



- Esquimalt Staff
 - Parks, Engineering
- MCA Management Advisory Group
- Community
 - All adjacent condo/rental towers
 - WB Community at large

Feedback



- Engineering dept - emergency turnaround & apartment garbage bin considerations
- A few parking concerns from adjacent building
- Huge majority fully supportive of IPPP concept

IPPP Proposal: Historical and ecological panels

čəŋiŋč Habitat at the Matson Conservation Area

A Rare and Unique Ecosystem

The Matson Conservation Area contains the last fully intact stand of čəŋiŋč GARRY OAK on the Inner Harbour. čəŋiŋč ecosystems are seriously threatened by invasive species and urban development, with only about 3% of traditional oak areas remaining. Thousands of native species depend on this unique ecosystem for their habitat, so it is critically important to protect these places. This includes plant species like čəŋiŋč YARBROW q'as'ə'ə'ə'ə' HOOKERS ONION and q'ə'ə'ə' CAMAS as well as numerous bird species such as 59 64'ə' GREAT BLUE HERON, 54'ə'ə'ə' WESTERN PURPLE MARTIN, q'ə'ə'ə'ə' BLACK OYSTERCATCHER, 54'ə'ə'ə' BUFFLEHEADS, and q'ə'ə'ə' BALD EAGLE.

Here are some fun facts about some of the native plants you can find here, see how many you can spot today!

čəŋiŋč GARRY OAK
čəŋiŋč are the defining species of this landscape. Their gnarled, crooked, heavy limbs and bark make them easily identifiable trees.

q'ə'ə'ə' ARBUTUS
q'ə'ə'ə' is famous for its dark reddish-brown bark that peels back in paper-like sheets to reveal a bright green underneath. It is the only broadleaved evergreen tree in the region.

sə'ə'ə' DOUGLAS FIR
sə'ə'ə' can grow upwards of 90m tall and live over 1000 years old! A stand of old growth forest contains trees that have been alive for centuries, and many of these trees will still have scars from past forest fires.

q'ə'ə'ə' BARESTEM DESERT-PARSLEY
q'ə'ə'ə' is an important plant to indigenous Peoples on southern Vancouver Island and neighbouring areas. Its yellow flowers develop into small "fruits" which are commonly thought of as seeds.

čəŋiŋč CHOCOLATE LILY
čəŋiŋč features dark purple bell-shaped flowers speckled with yellowish-green highlights. It is quite rare, and therefore if you are lucky enough to come across this beautiful flower please be careful not to disturb it.

q'ə'ə'ə' OCEANSPRAY
q'ə'ə'ə' also known as Ironwood, can be used to create many kinds of tools, spears, harpoons, bows, arrows, construction pegs, knitting needles and seafood barbecuing sticks.

Restoration Efforts
With the help of many dedicated volunteers there has been a huge effort to help protect these ecosystems and all of the plants and animals that call them home. Many species here are officially listed as being "at risk" of disappearing forever. Stewarding these natural spaces requires ongoing work to remove invasive species while replanting native ones. Everyone has an important role to play in protecting our region's biodiversity!

See how many plants and animals you can spot!

1. 54'ə'ə' ANNA'S HUMMINGBIRD	16. 54'ə'ə' BARN SWALLOW	31. 54'ə'ə' CHESTNUT-BACKED CHICKADEE	17. q'ə'ə' CAMAS	21. 54'ə'ə' SEARLUSH	27. 54'ə'ə' YARBROW	28. q'ə'ə' ARBUTUS
2. q'ə'ə' GLAUCOUS-WINGED GULL	17. q'ə'ə' BALD EAGLE	18. q'ə'ə' NORTHERN FLICKER	18. q'ə'ə' BARESTEM DESERT-PARSLEY	22. 54'ə'ə' WOOLY SUNFLOWER	28. 54'ə'ə' WHITE FAWN LILY	29. q'ə'ə' NOOTKA ROSE
3. 54'ə'ə' GREAT BLUE HERON	18. 54'ə'ə' BUFFLEHEAD	19. 54'ə'ə' BURRITTE	19. čəŋiŋč CHOCOLATE LILY	23. 54'ə'ə' FAREWELL TO SPRING	29. q'ə'ə'ə' HOOKER'S ONION	31. 54'ə'ə' HAWK
4. 54'ə'ə' WESTERN PURPLE MARTIN	19. 54'ə'ə' HOODED MERGANSER	20. 54'ə'ə' PEREGRINE FALCON	20. čəŋiŋč GARRY OAK	24. 54'ə'ə' SMALL-FLOWERED BLUE-EYED MARY	30. 54'ə'ə' DOUGLAS FIR	

More info at hat.bc.ca/matson

ABOUT THE ART AND DESIGN
Darlene Galt is a celebrated painter, designer, illustrator from Victoria. She is a member of Squamish Nation. Visit her on her Darlene Galt Fan club page on Facebook or www.darlene.ca

Thank you to Elmer George, Edward Thomas and Andrew Canak for their Lək'wə'ən Language Translations.

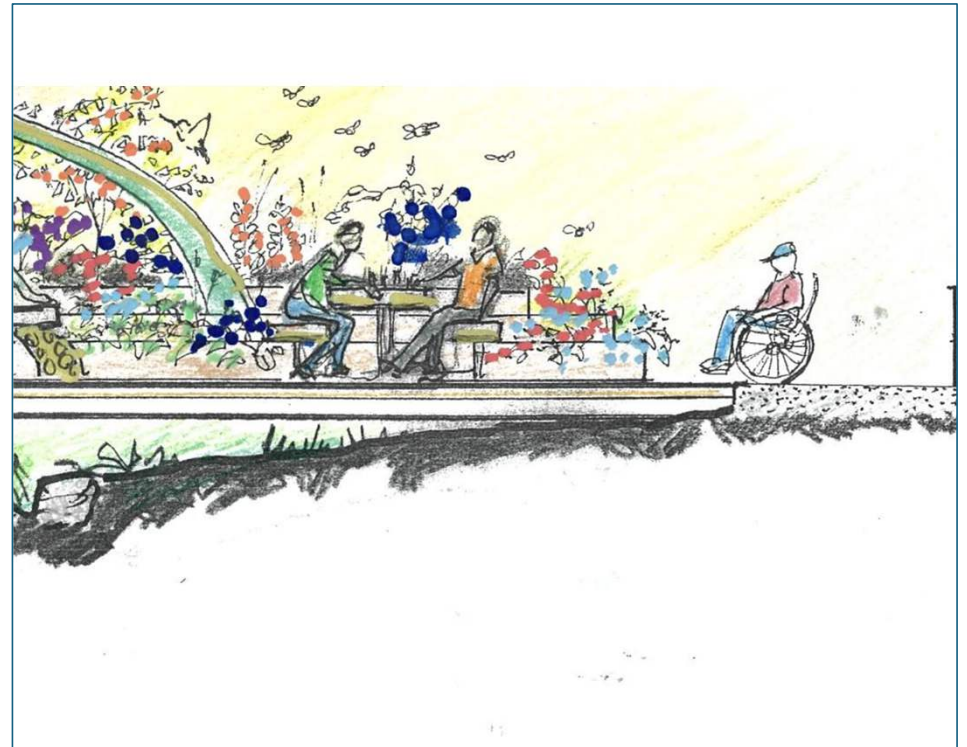
IPPP Proposal:

Raised planters for pollinator park with native plants



IPPP Proposal:

Accessible green space in which to relax, foster learning, and appreciate nature



IPPP Proposal:

Summary of Benefits

- Provides much needed green space for community
- Protects fragile MCA ecosystems
- Provides an area to learn, rest and enjoy nature
- Owned by the municipality









Next Steps

- Asking for Esquimalt's EP&R Advisory Committee support and recommendation to present to council
- Continuing consultations and improving our presentation over next month
- Presentation to Council in June





Thank you!