

# 1006 & 1008 Craigflower Road

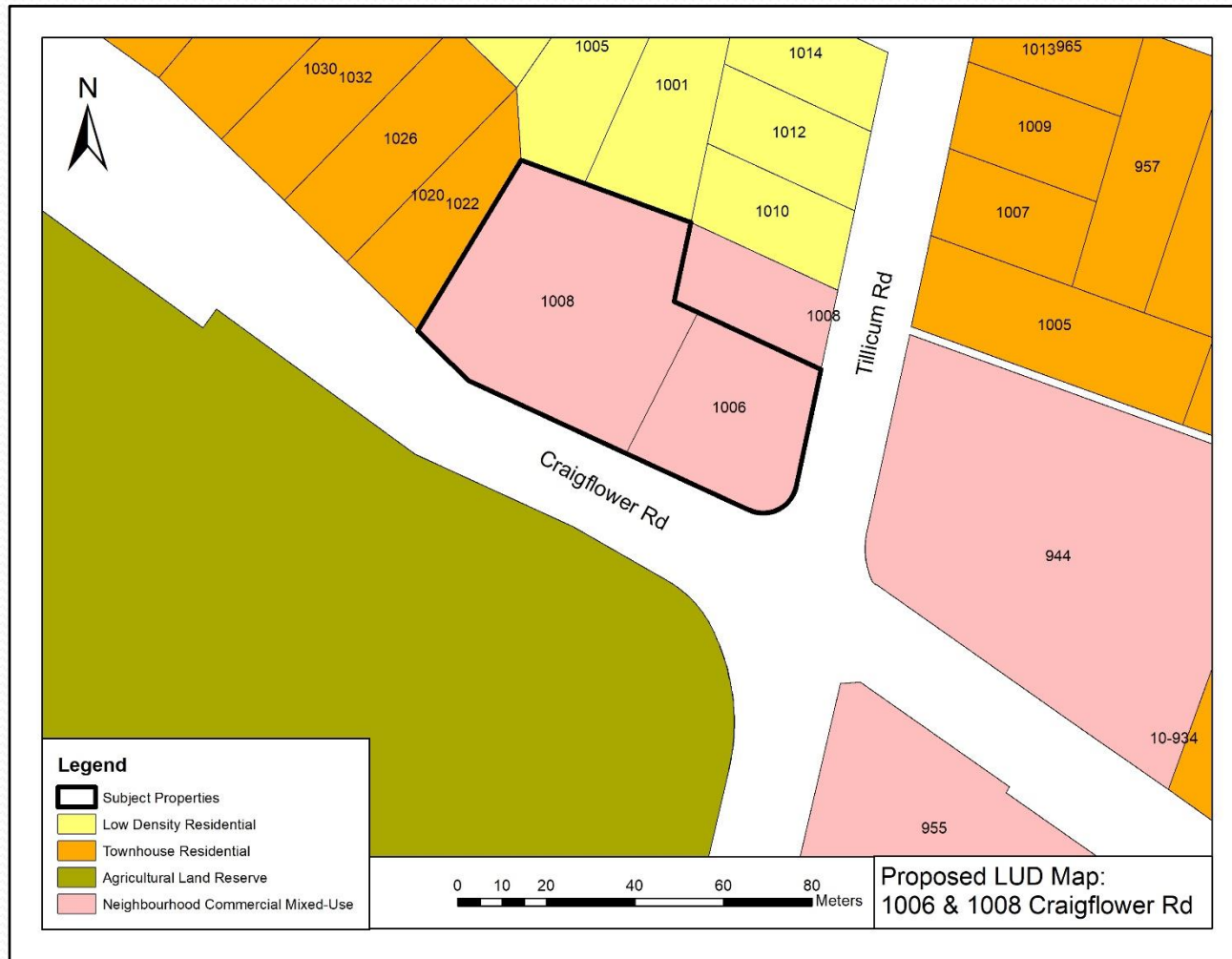
## Development Permit & Development Variance Permit Application



# 1. Site Location



## 2. OCP Proposed Land Use Designation

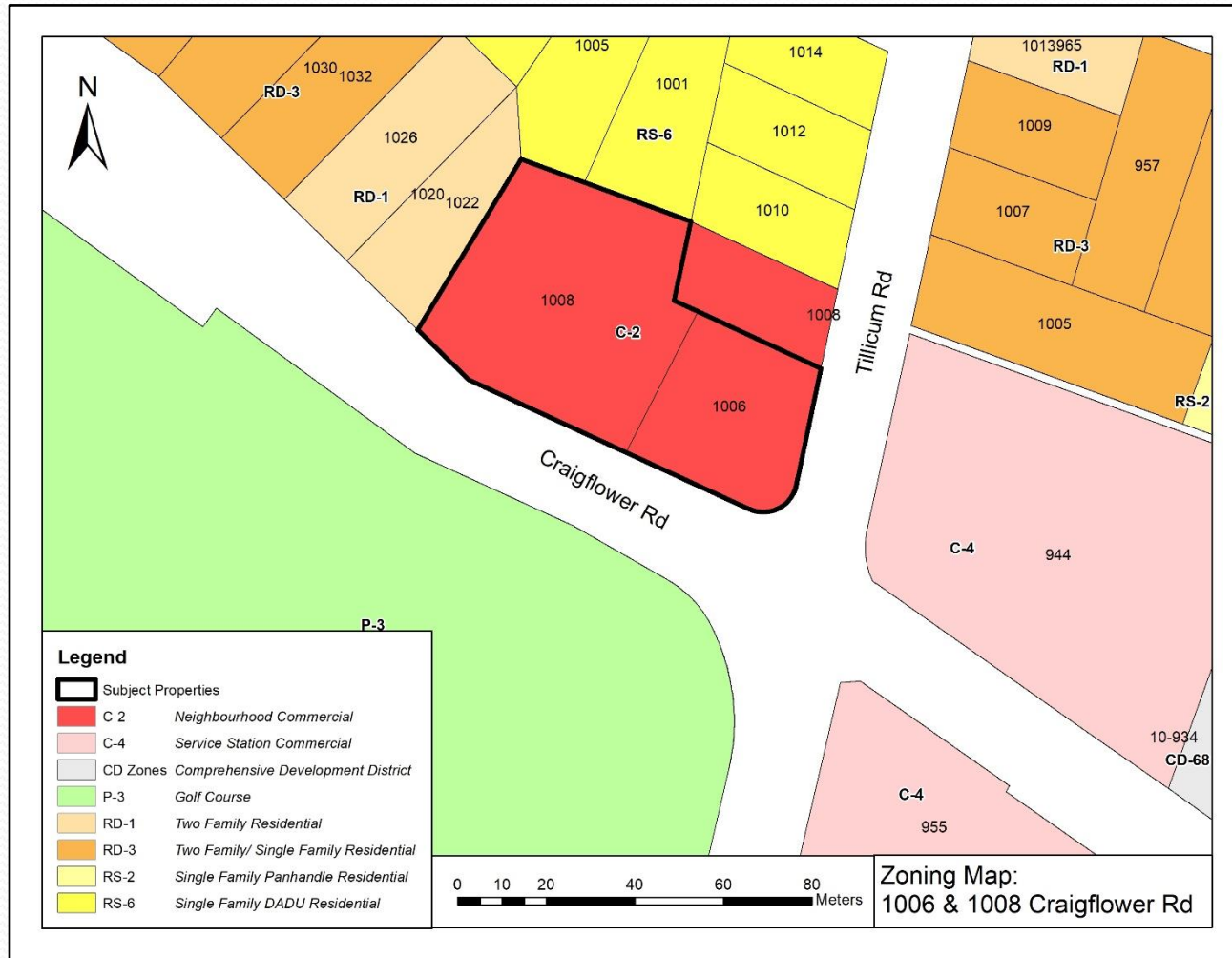


### Proposed Land Use Designation

Neighbourhood Commercial  
Mixed-Use



# 3. Zoning



## Existing Zoning

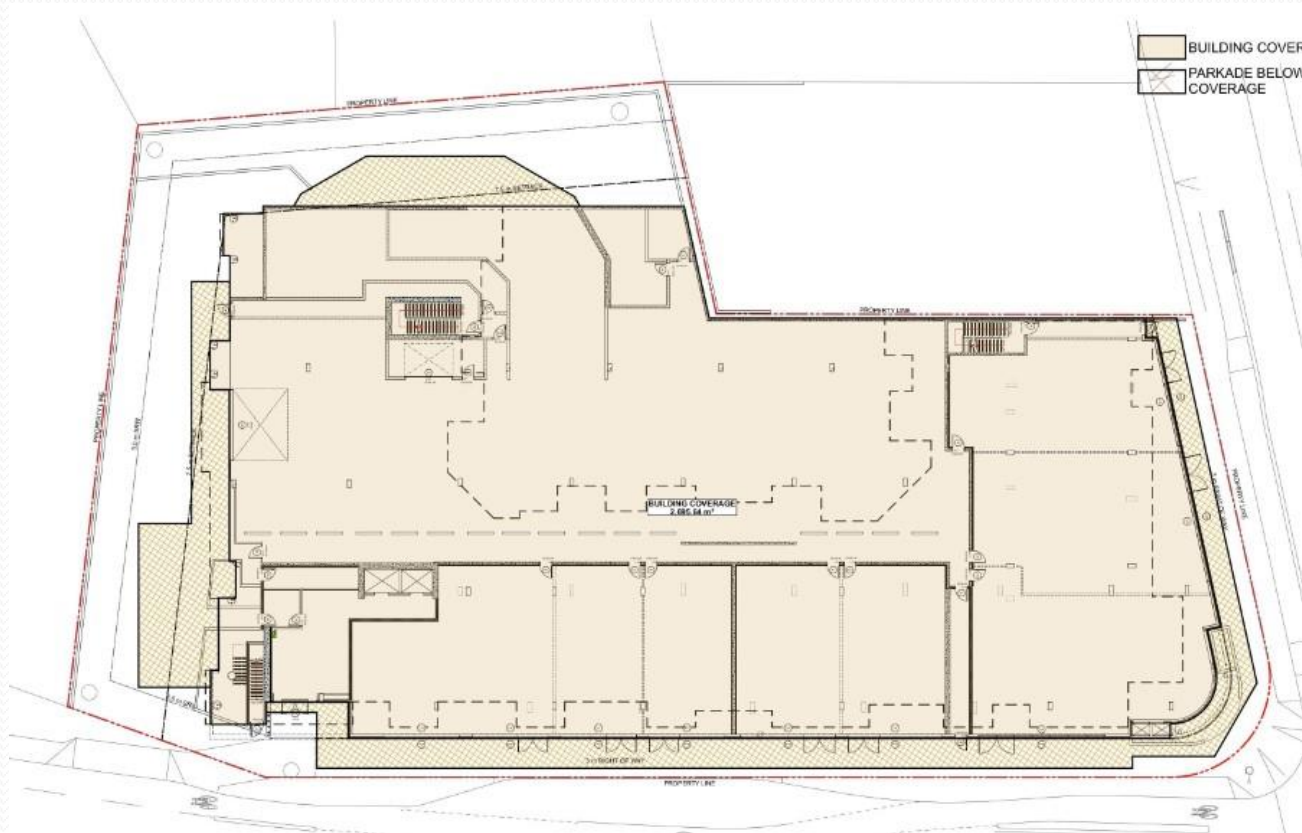
C-2

## 4. Zoning Regulations - Density



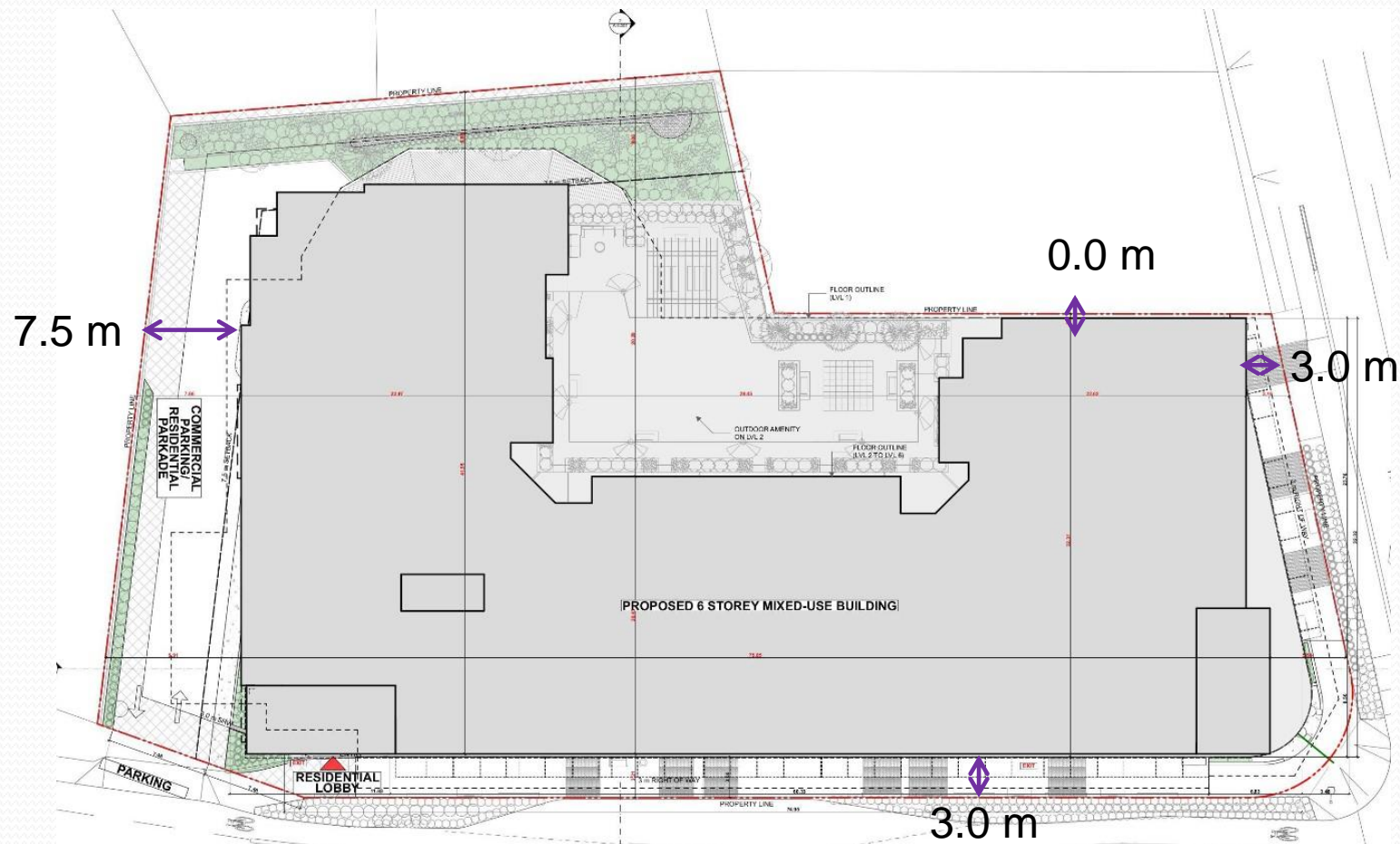
- 134 residential units
- Commercial space (minimum area of 1115 m<sup>2</sup>)

## 5. Zoning Regulations - Lot Coverage



Lot Coverage: 80%

## 6. Zoning Regulations - Setbacks



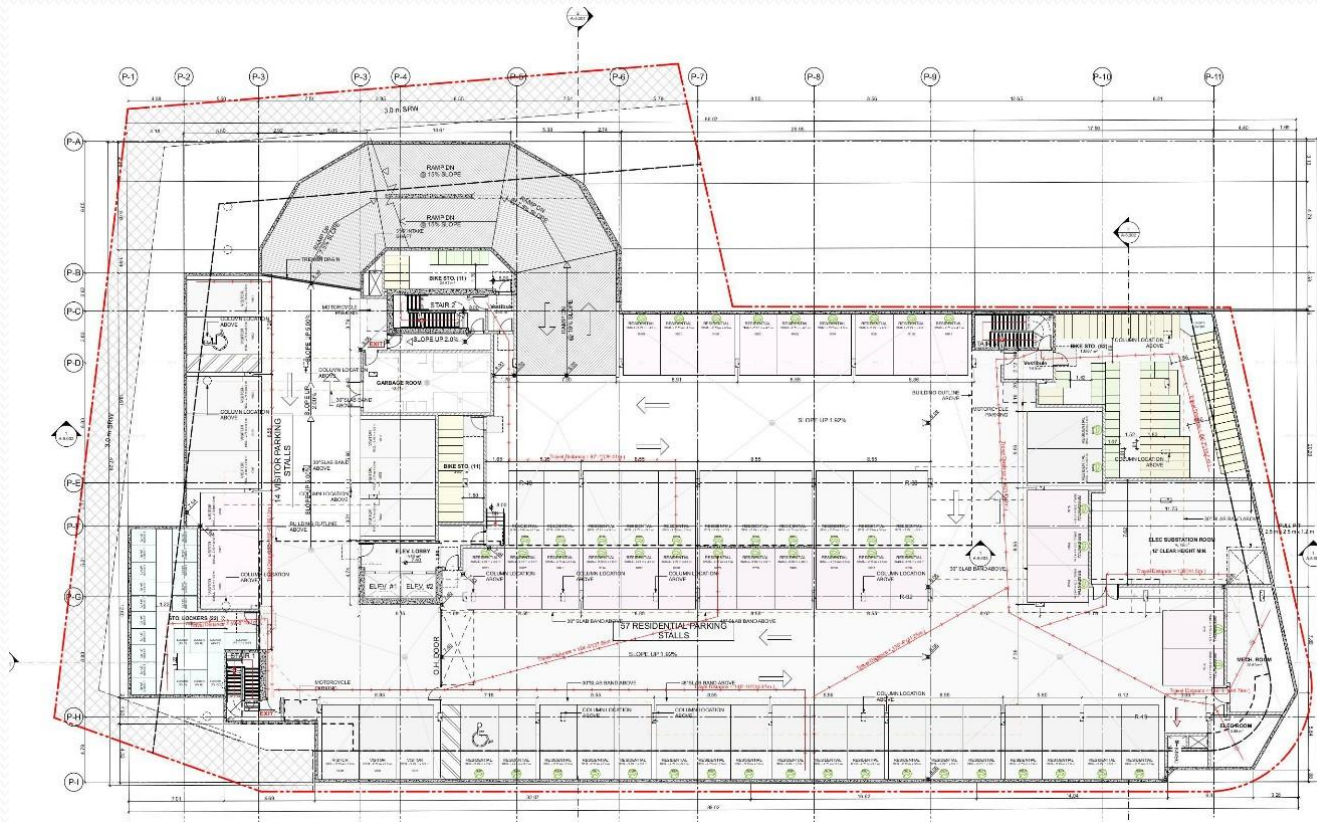


# 7. Zoning Regulations - Height





# 8. Zoning Regulations - Parking



- 182 parking spaces
  - Includes 14 visitor spaces
  - Includes 31 commercial spaces
  - 137 residential parking spaces for 134 residential units
- 139 bicycle parking

