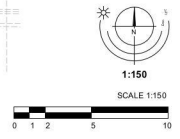


REQUIRED PLANT LIST

Trees	Botanical Name	Common Name	Size
Total: 44	<i>Acacia crumosa</i>	Yew Maple	6m cal.
	<i>Acacia greggii</i>	Fragrant Maple	6m cal.
	<i>Acacia rubra</i>	Outdoor Glory Red Maple	6m cal.
	<i>Alnus incana</i>	Red Alder	6m cal.
	<i>Amaranthus sp. grandiflorus</i>	Autumn Brilliance Red Amaranth	6m cal.
	<i>Cercis canadensis</i>	Eastern Redbud	6m cal.
	<i>Cercis canadensis 'Forest Pansy'</i>	Forest Pansy Redbud	6m cal.
	<i>Magnolia galieana</i>	Galley Magnolia	6m cal.
	<i>Quercus garryana</i>	Garry Oak	6m cal.
	Street Trees - Species to be determined by the Township of Esquimalt Parks Dept		
Large Shrubs			
Total: 51	<i>Hibiscus diversus</i>	Wild Musk Orange	#5 pot
	<i>Philadelphus lewisii</i>	King Edward VII Flowering Currant	#7 pot
	<i>Ribes sanguineum</i>	Blue Spice Rosemary	#6 pot
Medium Shrubs			
Total: 128	<i>Celastrus scandens</i>	White Rosehedge	#5 pot
	<i>Perovskia atriplicifolia</i>	Russian Sage	#7 pot
	<i>Ribes sanguineum</i>	Flowering Currant	#5 pot
	<i>Rosa gymnocarpa</i>	Eden Rose	#5 pot
	<i>Salvia officinalis</i>	Common Sage	#7 pot
	<i>Symphoricarpos albus</i>	Eleocharis	#6 pot
Small Shrubs			
Total: 98	<i>Baccharis salicifolia</i>	Salicy Sagebrush	#7 pot
	<i>Lavandula angustifolia 'Hidcote Blue'</i>	English Lavender	#7 pot
	<i>Lavandula stoechas 'Ole Queen'</i>	Provence Lavender	#5 pot
	<i>Lavandula stoechas 'Provence'</i>	Provence French Lavender	#7 pot
	<i>Lavandula stoechas</i>	Blue Spire Rosemary	#7 pot
	<i>Manissea repens</i>	Creeper Manissea	#7 pot
Perennials, Annuals and Ferns			
Total: 201	<i>Baccharis salicifolia</i>	Dwarf Fern	#7 pot
	<i>Calamagrostis canadensis</i>	Korean Feather Reed Grass	#7 pot
	<i>Calamagrostis canadensis 'Soft Feather'</i>	Karl Foerster Feather Reed Grass	#7 pot
	<i>Echinacea purpurea 'Magnus'</i>	Purple Coneflower	#7 pot
	<i>Helleborus scaberrimus</i>	Black Bellflower	#7 pot
	<i>Miscanthus sinensis 'Orchard'</i>	Madison Grass	#7 pot
	<i>Nassella tenuissima (Slip Perennial)</i>	Mane Grass	#7 pot
	<i>Polygonum persicaria</i>	Mane Grass	#7 pot
Groundcovers			
Total: 447	<i>Actinophloxia aurea 'Vancover Jade'</i>	Coastal Strawberry	#7 pot
	<i>Fragaria chionota</i>	Coastal Strawberry	#7 pot
	<i>Thymus praecox serotinus</i>	Thyme	#7 pot



Notes:
 1. All work to be completed to current BCSLA Landscape Standards
 2. All soft landscape to be irrigated with an automatic irrigation system

Rev. B - Issued for Development Permit (Re-Issued): April 01 - 26
 Rev. A - Resub.: Nov 07 - 25

1340 Sussex & 1337 Saunders | Landscape Concept Plan

L1/5



SITE LANDSCAPE PLAN

TREE INVENTORY

Tree ID	Species	Location	Age	Notes	Health	DBH	Height	Condition	Replacement	Remarks	Notes	
M1	City	Yes	Laburn	Chamaecyparis	30	10	3.0	3	Good	Fair/good	Moderate	Located with close proximity to existing overhead city wires.
M2	City	Yes	Cherry	Prunus	47	10	5.6	4	Fair	Poor	Moderate	Large tree with old historically as South side of Park. Close to the sidewalk. Pruning may be required.
M3	City	On	Yew	Taxus	15	8	1.6	2	Fair	Fair/good	Good	Multiple stems form at 5m above grade. Look for damage from over hailing.
M4	City	On	Yew	Taxus	21	15	5	3	Fair	Fair/good	Moderate	Shaded tree with a recently having been pruned by a contractor.
M5	City	Yes	Cherry	Prunus	41	10	4.9	4	Fair	Fair	Moderate	Health status - crown dieback, heavily broken canopy. Replacement required. Pruning may be required to clear the sidewalk.
M6	City	On	Yew	Taxus	2	3	1	1	Good	Fair	Good	Medium sized tree with a very young healthy surface root at 5m above grade. May be removed in the future.
M7	City	Yes	Cherry	Prunus	7	4	0.8	2	Fair	Fair	Moderate	Shaded tree with a recently having been pruned by a contractor.
M8	City	Yes	Cherry	Prunus	38	10	5.6	5	Fair	Fair	Moderate	Health status - crown dieback, heavily broken canopy. Replacement required. Pruning may be required to clear the sidewalk.
M9	City	Yes	Cherry	Prunus	49	10	5.3	4	Good	Fair	Good	Health status - crown dieback, heavily broken canopy. Replacement required. Pruning may be required to clear the sidewalk.
M10	City	Yes	Garry oak	Quercus garryana	38	15	5.3	4	Good	Fair	Good	Located within the footprint of the proposed development. Will be heavily impacted by excavation and replacement of the foundation of the proposed parking. Also located within the footprint of the proposed parking.
M11	City	Yes	Douglas fir	Pseudotsuga	29	20	6.6	7	Good	Fair	Moderate	Health status - crown dieback, heavily broken canopy. Replacement required. Pruning may be required to clear the sidewalk.
M12	City	Yes	Garry oak	Quercus garryana	49	10	5.3	4	Fair	Fair/good	Moderate	Health status - crown dieback, heavily broken canopy. Replacement required. Pruning may be required to clear the sidewalk.
M13	City	On	Garry oak	Quercus garryana	51	20	6.1	7	Fair/good	Fair/good	Moderate	Health status - crown dieback, heavily broken canopy. Replacement required. Pruning may be required to clear the sidewalk.

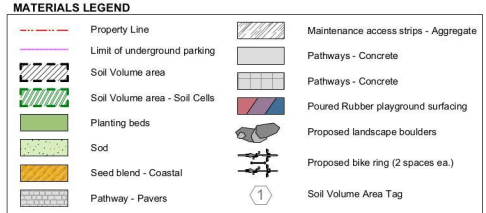
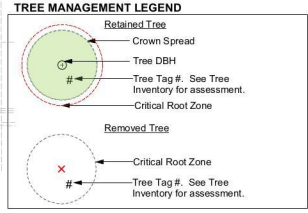
TREE REPLACEMENT CHART

Quantity of Existing trees	# of Trees Retained	# of Trees Removed	Replacement Tree Ratio	Replacement Trees Required
0	5	5	2 trees @ 1:1 1 trees @ 2:1 2 trees @ 3:1	2 2 6
0	0	0	1:1	0
0	N/A	N/A	N/A	N/A
Total:				18*

SOIL VOLUME CHART

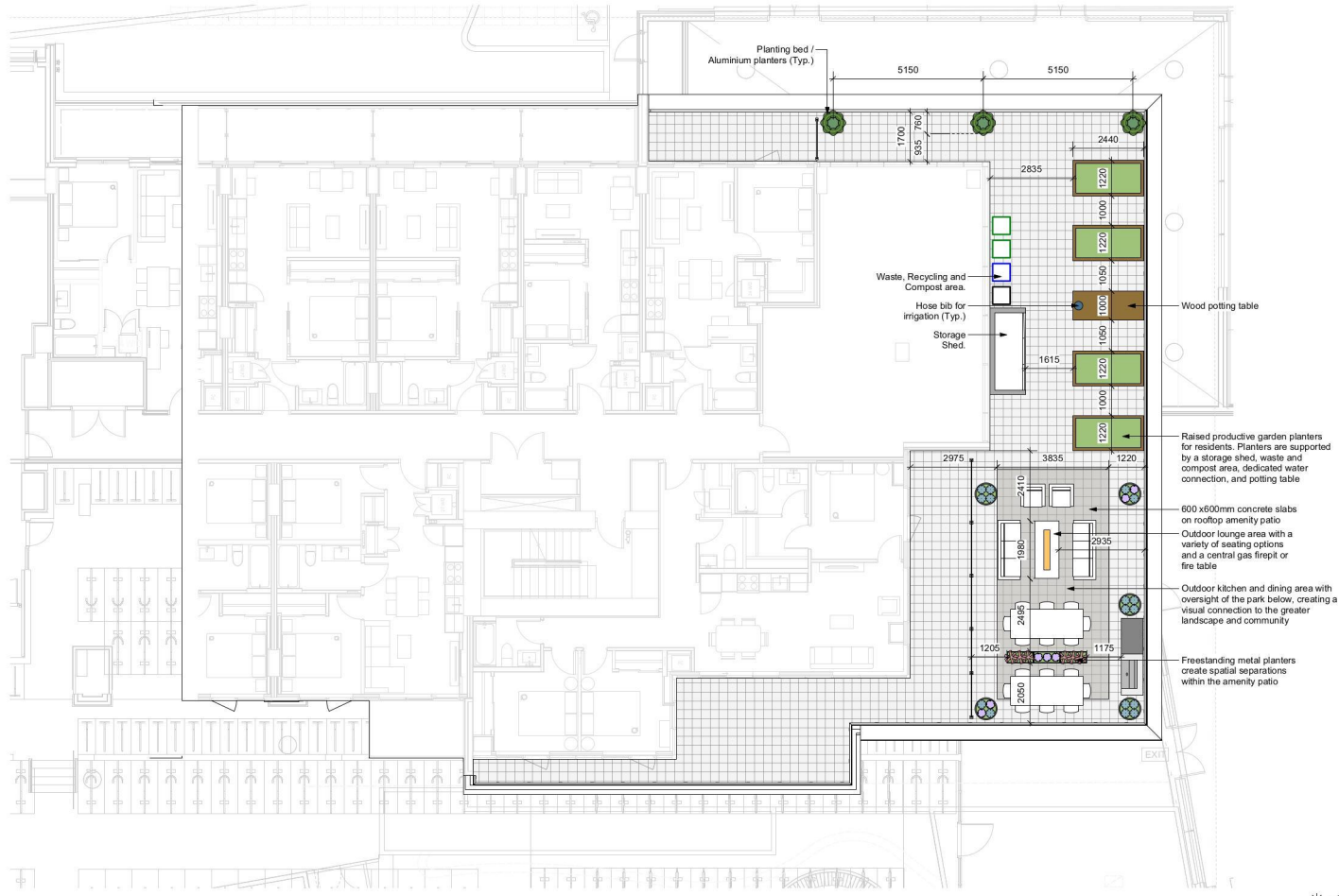
Planting Area ID	Area (m ²)	Soil Volume Multiplier	Estimated Soil Volume	Replacement Tree Proposed			
				A #Small	B #Medium	C #Large	D #Large
1	19.41	1	19.41	2			
2	20.1	1	20.1	2			
3	19.44	1	19.44	3			
4	23.1	0.8	26.46	2			
5	69.47	0.5	55.76				3
6	184.59	0.6	110.754				6
7	14.7	1	14.7				1
8	12.94	0.6	7.764				1
7 TOTAL	27.64	See Above	22.46	2			
8	11.69	1	11.69				
8S	50.81	0.95	48.2695				
8 TOTAL	62.5	See Above	59.96				3
9A	6.68	1	6.68				
9B	12.75	0.6	7.65				
9C	7.06	0.6	4.236				
9D	19.76	1	19.76				
9E	19.76	0.6	11.856				
9S	9.12	0.6	5.472				
9 TOTAL	77.13	See Above	57.65	3	1	1	
10A	45.53	0.6	27.318				
10B	9.62	0.6	5.772				
10C	62.24	0.6	37.344				
10D	9.62	0.6	5.772				
10S	30.13	0.6	18.078				
10 TOTAL	157.14	See Above	94.26	4			1
11	15.48	1	15.48	2			
12	18.3	0.6	10.98	1			
13	9.93	0.9	8.937	1			
14	45.8	0.9	36.64	4			
15	6.39	0.9	5.751	1			
16	5.15	0.8	4.12	4			
TOTALS	1099.98	N/A	806.391	31	1	1	14

NOTE: Soil volume areas with "S" indicate soil cell area



Rev. B - Issued for Development Permit (Re-Issued): April 01 - 26
Rev. A - Resub: Nov 07 - 25

1340 Sussex & 1337 Saunders | Tree Management Plan



ROOFTOP PLANTING - LEVEL 5



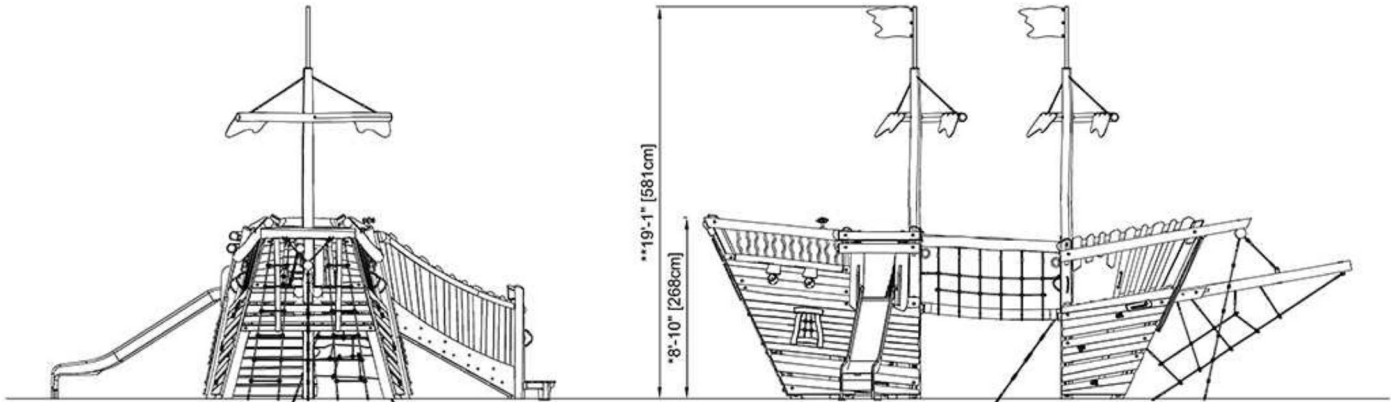
REQUIRED PLANT LIST

ID	Quantity	Botanical Name	Common Name	Size
EPur	6	<i>Scirpus japonicus 'Magnus'</i>	Straw Cordgrass	#1 pot
FOG	10	<i>Festuca ovina glauca 'Elgin Blue'</i>	Elgin Blue Fescue	#1 pot
OpJa	24	<i>Ophiopogon japonicus 'Nensai'</i>	Swamp Mondo Grass	#1 pot
TaSa	3	<i>Taxus saccata</i>	English Yew	#5 pot
ThPr	7	<i>Thymus praecox arvensis</i>	Wild Thyme	#1 pot
	0			

Notes:
 1. All work to be completed to current BCSLA Landscape Standards
 2. All soft landscape to be irrigated with an automatic irrigation system
 Rev. B - Issued for Development Permit (Re-Issued): April 01 - 26
 Rev. A - Resub: Nov 07 - 25

1340 Sussex & 1337 Saunders | L5 Roof Concept Plan

EXPLORER SHIP, MEDIUM - BY KOMPAN



NRO543

FREESTANDING WATER MISTER



CONCRETE SEATWALL



POURED RUBBER PLAYGROUND SURFACE



Rev. B - Issued for Development Permit (Re-Issued): April 01 - 26
Rev. A - Resub: Nov 07 - 25

L5/5

1340 Sussex & 1337 Saunders | Site Features