

301-503 Park Place

Development Variance Permit Application

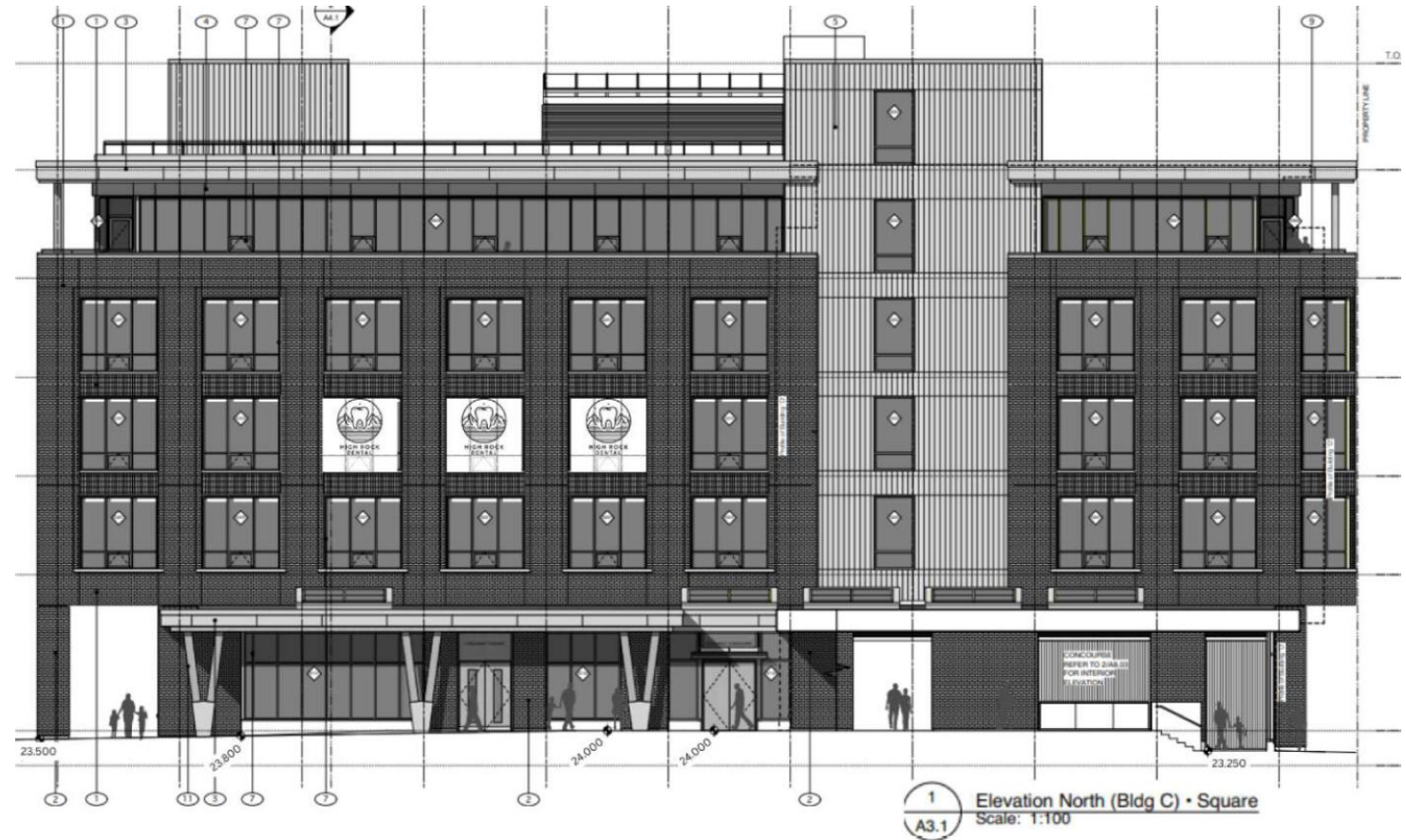
Site Location



Variances Requested

WINDOW SIGNS – LOCATION AND PLACEMENT

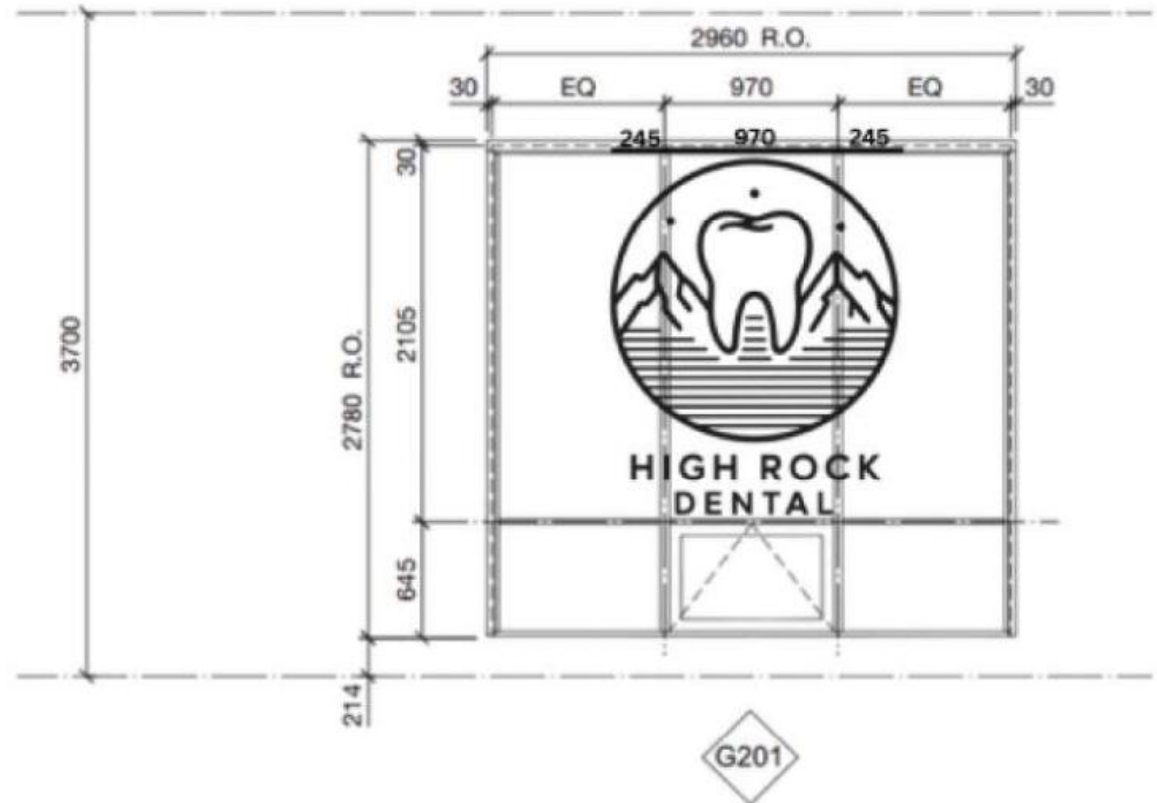
- Regulation– 25% of Window Area
- Proposed – Third Floor



Variances Requested

WINDOW SIGNS - SIGN AREA

- Maximum Allowed – 25% of Window Area
- Proposed – 37.5% of Window Area



5

Technical drawing of a dental chair control panel (G201) showing dimensions and layout. The panel is rectangular with a total width of 2960 R.O. and a total height of 3700. The layout includes a central display area with a logo and text, and a control area below it. Dimensions are provided in R.O. (Right to Left).

Dimensions and Layout:

- Total width: 2960 R.O.
- Total height: 3700
- Top horizontal dimensions: 30, EQ, 970, EQ, 30
- Left vertical dimensions: 30, 2105, 645, 214
- Right vertical dimensions: 30, 2105, 645, 214
- Central display area width: 970
- Central display area height: 245
- Control area width: 970
- Control area height: 645

The central display area features a logo with a tooth and the text "HIGH ROCK DENTAL". The control area features a diamond-shaped button labeled "G201".

Questions?