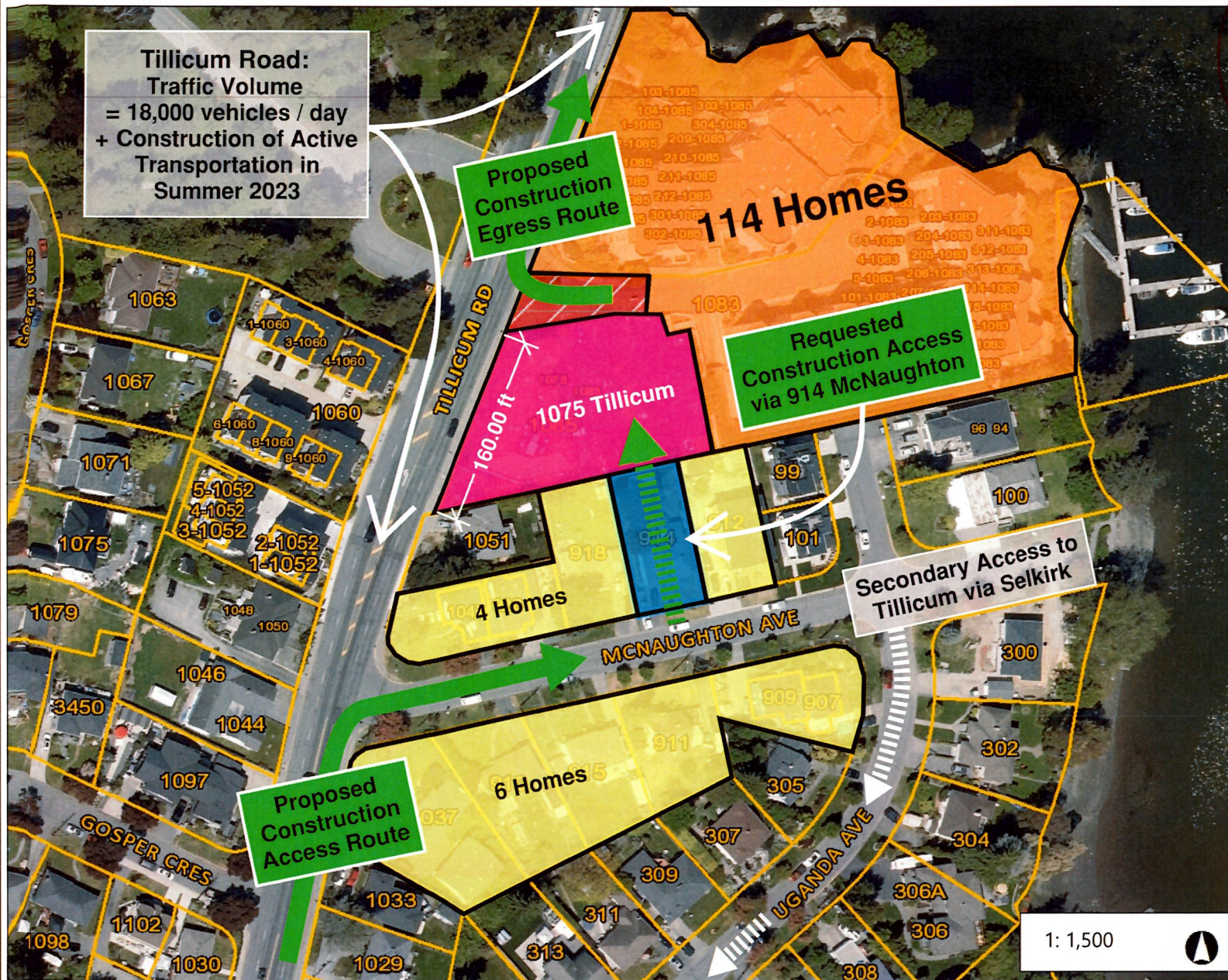


# APPENDIX A: 914 McNaughton Ave - Construction Access Diagram



RECEIVED

MAR 31 2023

CORP. OF TOWNSHIP  
OF ESQUIMALT

## MAP LEGEND

- Impacted Homes
- Homes with no alt. access to Tillicum
- Strata Lane for 1083 / 1085 and 1075 Tillicum
- 1075 Tillicum Frontage
- 1075 Tillicum - Future Multi-family Building
- 914 McNaughton - Subject Property
- Proposed Construction Access Route
- Alternative Route to Tillicum for McNaughton Residents

## NOTES:

- 1) TUP is seeking construction vehicle access through 914 McNaughton. See TUP application for more details.
- 2) New active transportation upgrades beginning summer 2023 will reduce road space on Tillicum.
- 3) Easement for shared strata lane allows for vehicle access, but not construction truck staging, material deliveries, etc. which are needed for construction of 1075 Tillicum.

76.2 0 38.1 76.2 Meters

NAD\_1983\_UTM\_Zone\_10N  
© Capital Regional District

Important: This map is for general information purposes only. The Capital Regional District (CRD) makes no representations or warranties regarding the accuracy or completeness of this map or the suitability of the map for any purpose. This map is not for navigation. The CRD will not be liable for any damage, loss or injury resulting from the use of the map or information on the map and the map may be changed by the CRD at any time.