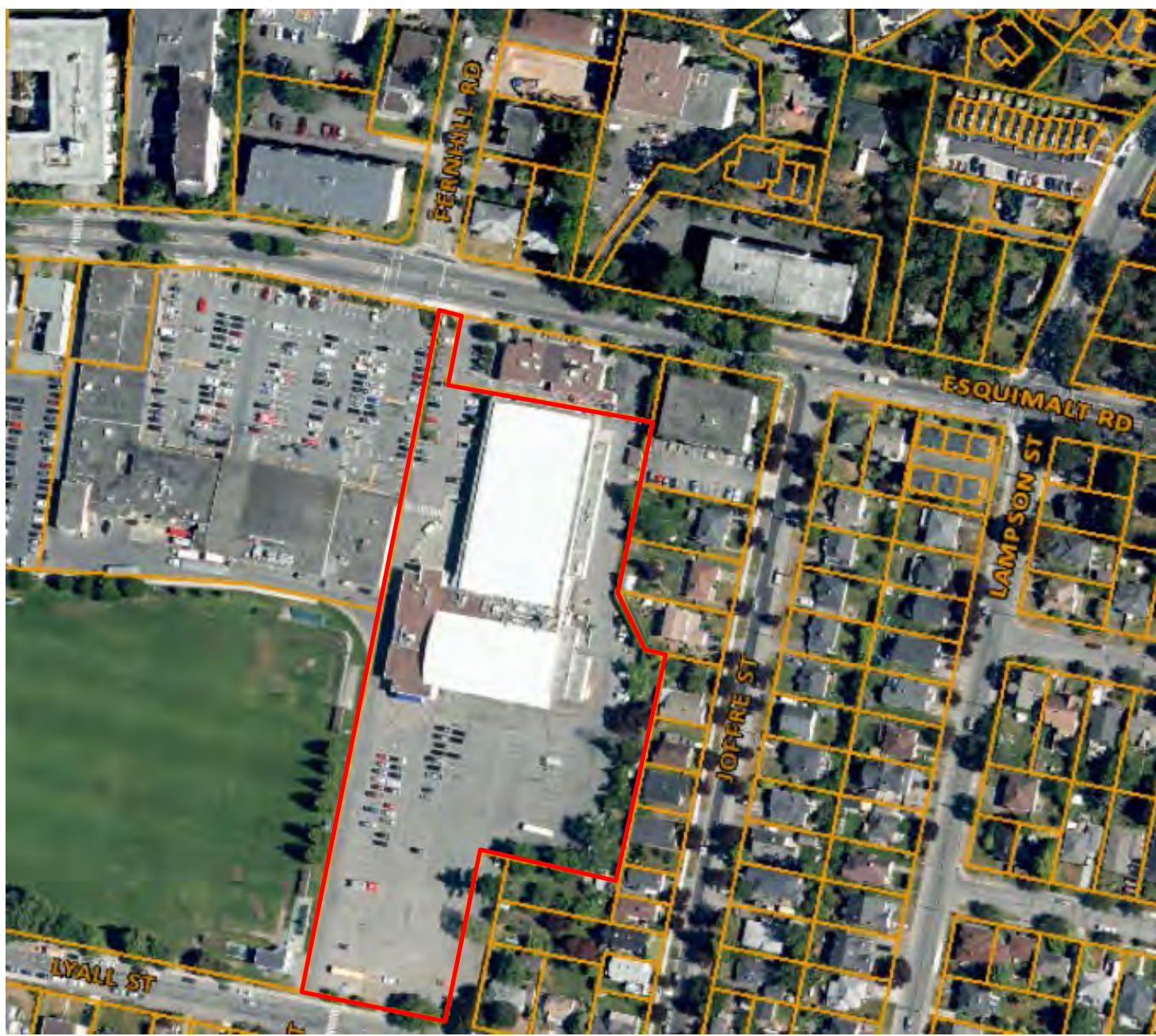
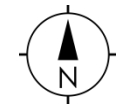


1151 Esquimalt Road - air photo



Freestanding Signs

9.8.1 Number Permitted

Only one Freestanding Sign is permitted on a site and that site must have a minimum frontage of 30 metres. On a corner lot, both street frontages may be used to calculate the total frontage.

9.8.2 Location

- a) A Freestanding Sign shall not project over a property line and shall not be located within 30 metres of a Residential Zone.
- b) No part of a Freestanding Sign shall be located within 2 metres of any intersecting property lines or driveway access or within 1 metre of any building and in no case shall a Freestanding Sign be located so as to obstruct pedestrian or vehicular traffic.
- c) All Freestanding Signs shall be sited in a Landscaped Area which shall be at least equal in size to the Sign Area. The Landscaped Area shall be an integral part of the Sign Permit.

9.8.3 Sign Placement, Area and Dimensions

- a) A Freestanding Sign, including the signage structure, shall be limited to a maximum height from Ground of 7.5 m.
- b) A Freestanding Sign shall be limited to 0.3 square metres of Sign Area per lineal metre of street frontage but in no case shall the total Sign Area, which includes both sides, exceed 20. square metres.
- c) Notwithstanding Section 9.8.2 (a), a Freestanding Sign (limited to a maximum area of 1 square metre and a maximum height from Ground of 1.5 metres) is permitted for apartment and multi-family dwellings.
- d) A Freestanding Sign for civic, private hospital and public assembly Uses is permitted and shall be limited to a maximum area of 2.5 square metres and a maximum height from Ground of 1.5 metres.

9.8.4 Copy Area

The maximum Copy Area is 40% of the Sign Area of each face of a Freestanding Sign.

9.8.5 Illumination

A Freestanding Sign may be illuminated by internal lighting, external illumination, floodlighting and neon.