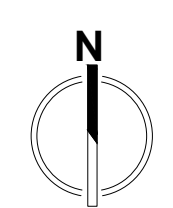


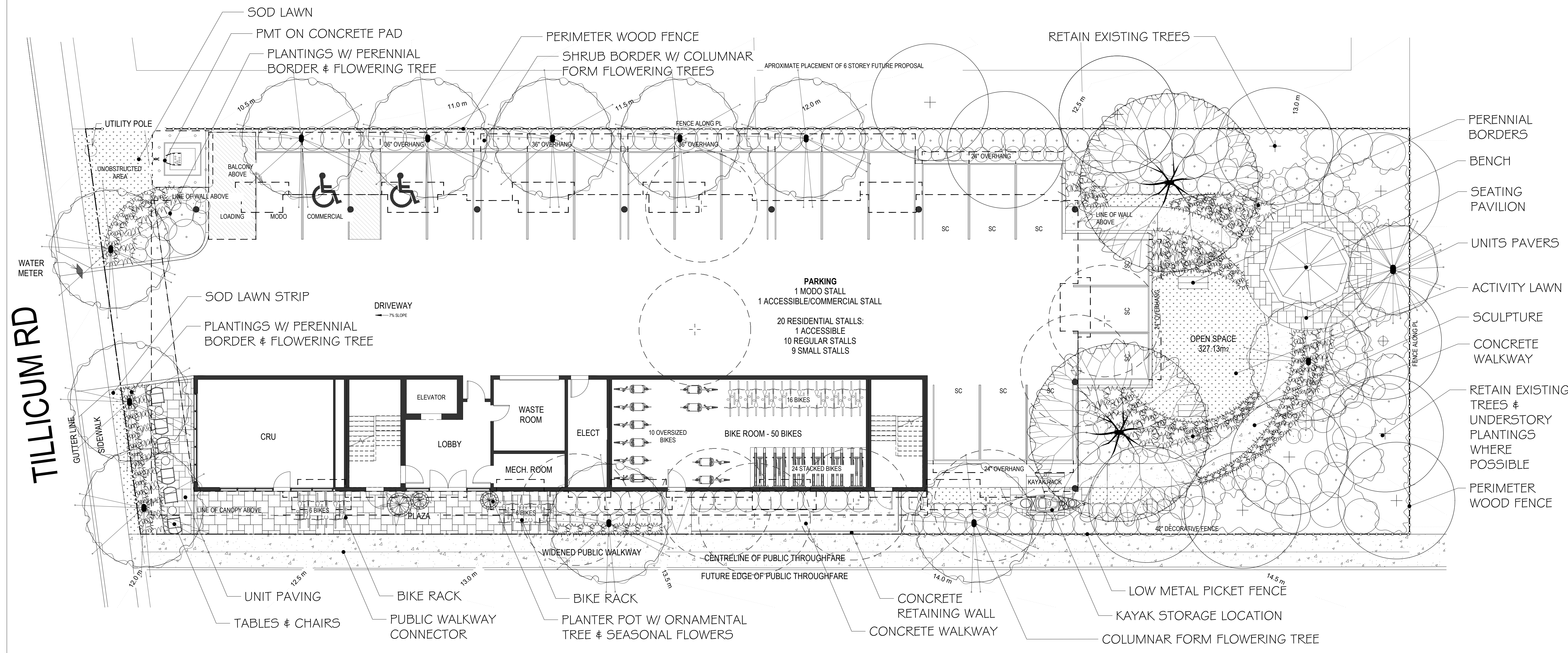
Copyright Reserved: These drawings are at all times the property of the Landscape Architect. Reproduction in whole or in part without written consent of the Landscape Architect is prohibited.

NOTES:
 1) DO NOT SCALE THE DRAWING. WORK TO FIGURED DIMENSIONS ONLY.
 2) CONTRACTOR TO VERIFY ALL DIMENSIONS ON SITE. REPORT ANY DISCREPANCIES TO LANDSCAPE ARCHITECT PRIOR TO PROCEEDING WITH THE WORK.
 3) THIS DRAWING IS THE PROPERTY OF FORSITE LANDSCAPE ARCHITECTURE AND MAY NOT BE REPRODUCED WITHOUT WRITTEN PERMISSION.



4★SITE
 LANDSCAPE ARCHITECTURE
 AND SITE PLANNING 250.608.7885

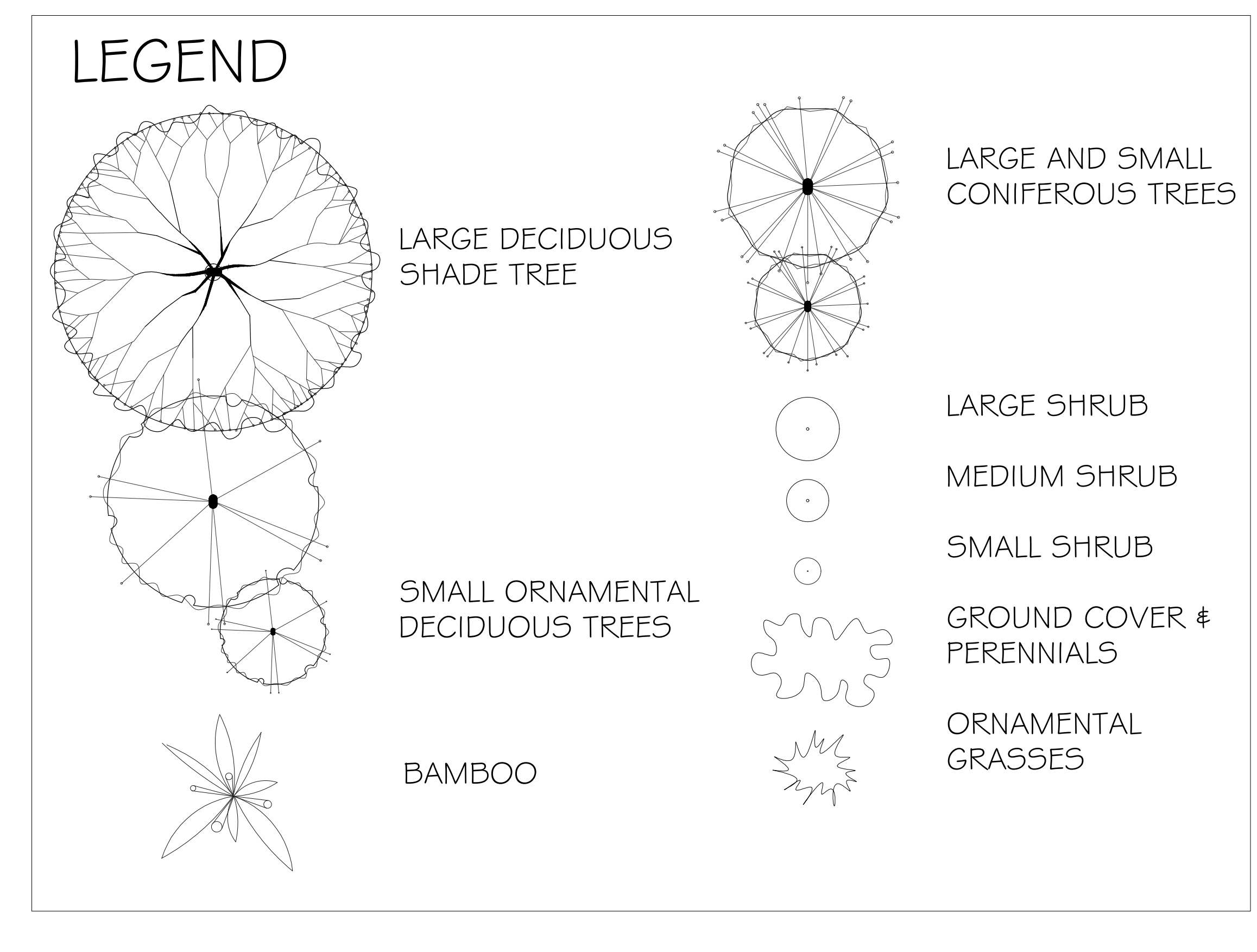
project north:



PLANT LIST					
	KEY	COMMON NAME	BOTANICAL NAME	SIZE	
TREES	RMAP	Columnar Red Maple	<i>Acer rubrum</i> var. 'Bowhall'	8cm Cal	
	FAGU	Columnar Purple Beech	<i>Fagus sylvatica</i> var. 'Dawyks Purple'	8cm Cal.	
	LIQU	Sweetgum	<i>Liquidambar styraciflua</i> 'Worplesdon'	8cm Cal.	
	PDGC	Pacific Flowering Dogwood	<i>Cornus nuttallii</i> var. 'Eddie's White Wonder'	6cm Cal.	
	STYR	Japanese Snowbell	<i>Styrax japonica</i>	6cm Cal.	
	JMAP	Japanese Maple	<i>Acer palmatum</i> var. 'Bloodgood'	5cm Cal.	
	VPIN	Vanderwolf Pine	<i>Pinus flexilis</i> var. 'Vanderwolf's Pyramid'	2.5m Ht.	
	LARGE	PIER	Lily of the Valley	<i>Piennis japonica</i> var. 'Forest Flame'	#5 Pot
	SHRUBS	LRHA	Rhododendron	<i>Rhododendron</i> var. 'Pink Walloper'	#5 Pot
		LRHB	Rhododendron	<i>Rhododendron</i> var. 'Gomer Waterer'	#5 Pot
MEDIUM	ALAT	Dwarf Burning Bush	<i>Euonymus alata</i> var. 'Compacta'	#2 Pot	
	MAHC	Dwarf Oregon Grape	<i>Mahonia aquifolium</i> var. 'Compacta'	#2 Pot	
	VACC	Evergreen Huckleberry	<i>Vaccinium ovatum</i> var. 'Thunderbird'	#2 Pot	
	ABE	Glossy Abelia	<i>Abelia x grandiflora</i> var. 'Edward Goucher'	#2 Pot	
	SALA	Salal	<i>Gaultheria shallon</i>	#2 Pot	
	RDOG	Red Twig Dogwood	<i>Cornus stolonifera</i>	#2 Pot	
	YDOG	Yellow Twig Dogwood	<i>Cornus alba</i> var. 'Bud's Yellow'	#2 Pot	
	RIBE	Red Flowering Currant	<i>Ribes sanguineum</i> var. 'King Edward'	#2 Pot	
	CYPR	Upright Cypress	<i>Cupressus</i> var. 'Wilma Goldcrest'	#2 Pot	
	SMALL	DWFL	Dwarf Lily of the Valley	<i>Piennis japonica</i> var. 'Debutante'	#1 Pot
EUOF		Creeping Euonymus	<i>Euonymus fortunei</i> var. 'Emerald & Gold'	#1 Pot	
POLY		Sword Fern	<i>Polystichum munitum</i>	#1 Pot	
ILEX		Japanese False Holly	<i>Ilex crenata convexa</i>	#1 Pot	
ADOG		Dwarf Red Twig Dogwood	<i>Cornus sericea</i> 'Arctic Fire'	#1 Pot	
SPGF		Goldflame Spirea	<i>Spirea bumalda</i> var. 'Gold Flame'	#1 Pot	
SARC		Sweetbox	<i>Sarcococca humilis</i>	#1 Pot	

KEY	COMMON NAME	BOTANICAL NAME	SIZE
BEAR	Bearberry	<i>Arctostaphylos uva-ursi</i> var. 'Vancouver Jade'	SP4
BERG	Heartleaf Bergenia	<i>Bergenia cordifolia</i> var. 'Bressingham Ruby'	SP4
VITI	Mountain Cranberry	<i>Vitis idaea minus</i>	SP4
FRAG	Coastal Strawberry	<i>Fragaria chiloensis</i>	SP4
AJUG	Black Bugleweed	<i>Ajuga reptans 'Metallica'</i>	SP4
GLOR	Creeping California Lilac	<i>Ceanothus gloriosus</i>	SP4
COTO	Creeping Cotoneaster	<i>Cotoneaster dameni</i>	SP4
GAUL	Wintergreen	<i>Gaultheria procumbens</i>	SP4
CAREX	Variegated Sedge	<i>Carex morrowii</i> var. 'Ice Dance'	#1 Pot
KARL	Feather Reed Grass	<i>Calamagrostis acutifolia</i> var. 'Karl Foerster'	#1 Pot
TEST	Flame Sedge	<i>Carex testacea</i>	#1 Pot
JUNC	Common Rush	<i>Juncus effusus</i>	#1 Pot
STIP	Spear Grass	<i>Stipa calamagrostis</i>	#1 Pot
MISC	Maiden Hair Grass	<i>Miscanthus sinensis</i>	#1 Pot
SCIZ	Kaffir Lily	<i>Schizostylis coccinea</i> var. 'Oregon Sunset'	SP5
HEMI	Dwarf Daylily	<i>Hemerocallis</i> var. 'Stella D'Oro'	SP5
IRIS	Sweet Iris	<i>Iris pallida</i> var. 'Aureo -Vanegata'	SP5
LAVA	Lavender	<i>Lavandula angustifolia</i> var. 'Hidcote'	SP5
PERO	Russian Sage	<i>Perovskia atriplicifolia</i> var. 'Lacey Blue'	SP5
ASTI	Astilbe	<i>Astilbe chinensis</i> var. 'Pumila'	SP5
CLEM	Montana Clematis	<i>Clematis</i> var. 'Elizabeth'	#2 Pot
ARM	Evergreen Clematis	<i>Clematis armandii</i>	#2 Pot

Notes: - All landscape work to conform with B.C.S.L.A. / B.C.N.T.A. standard specification.
 - All areas to be irrigated with an automatic underground system.



scale:

project title:
1005 TILLICUM ROAD

drawing title:
LANDSCAPE CONCEPT PLAN

project no.: **1**

date: **07 MAR 2025** scale: **1:100**

checked by: **FORTH** drawn by: **RF**

sheet no.:

L1