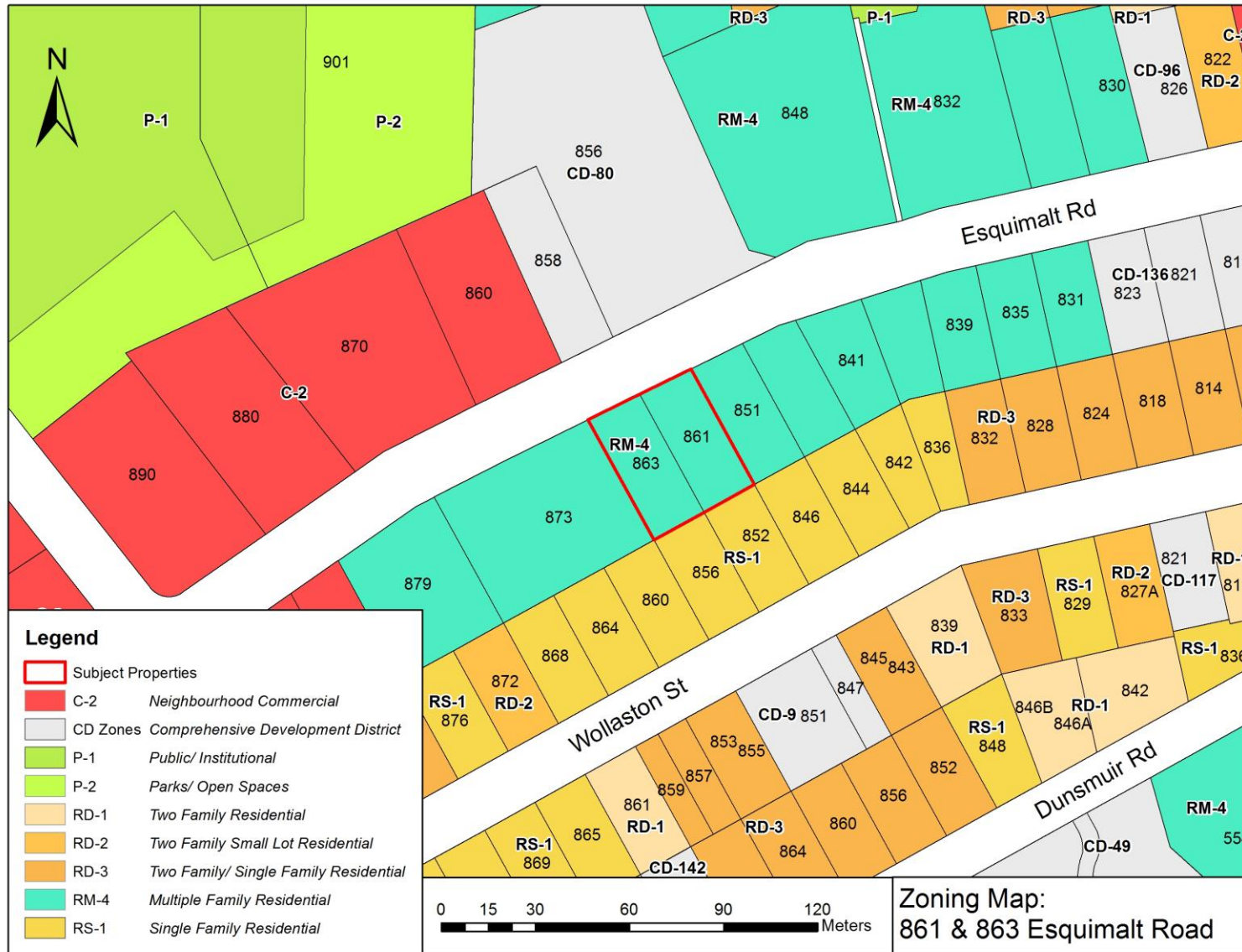


TOWNSHIP OF ESQUIMALT

# Development Permit Application 861 & 863 Esquimalt Road

# Site Location





# Zoning

## PREVIOUS ZONING

Multiple Family Residential [RM-4]

## NEW ZONING

Comprehensive Development District [CD No. 158]



# Zoning Regulations



## DENSITY

- 59 residential units
- Floor Area Ratio of 2.0

# Zoning Regulations



## HEIGHT

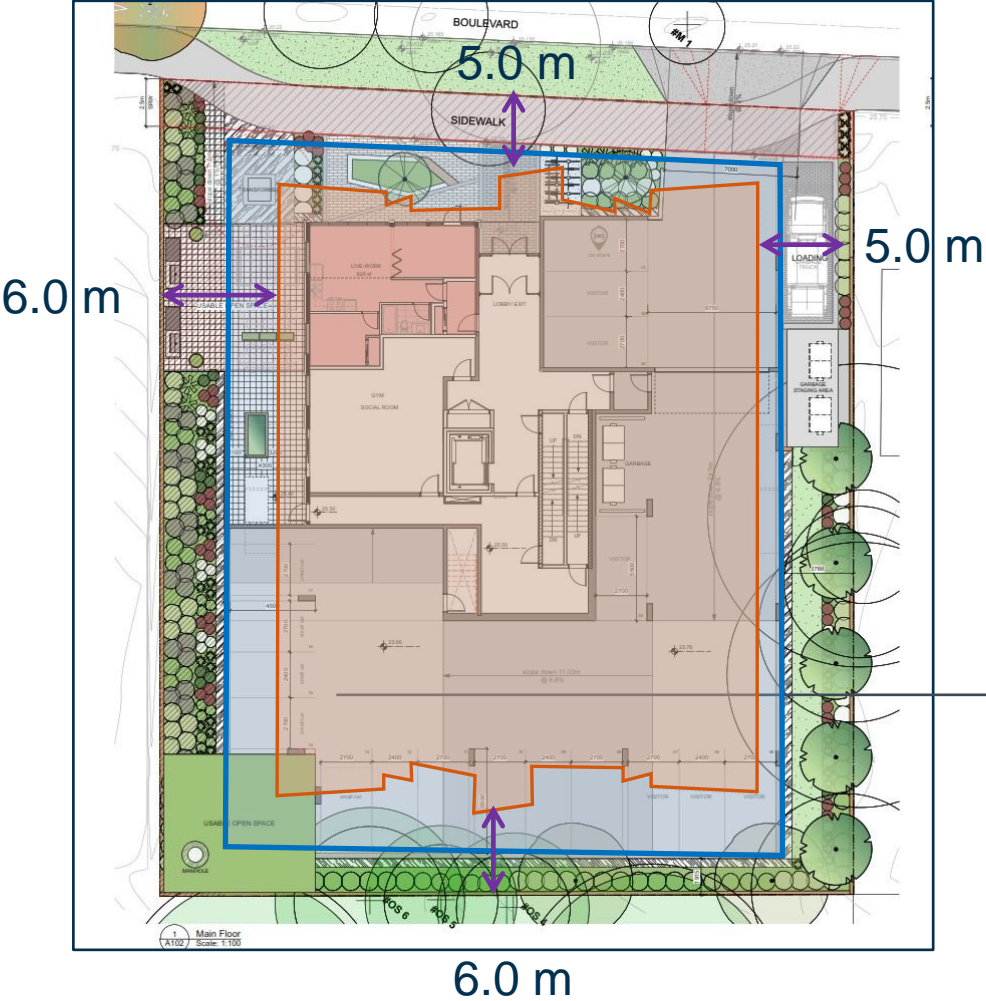
- 21.4 metres
- 6 storeys

## 6



# Zoning Regulations

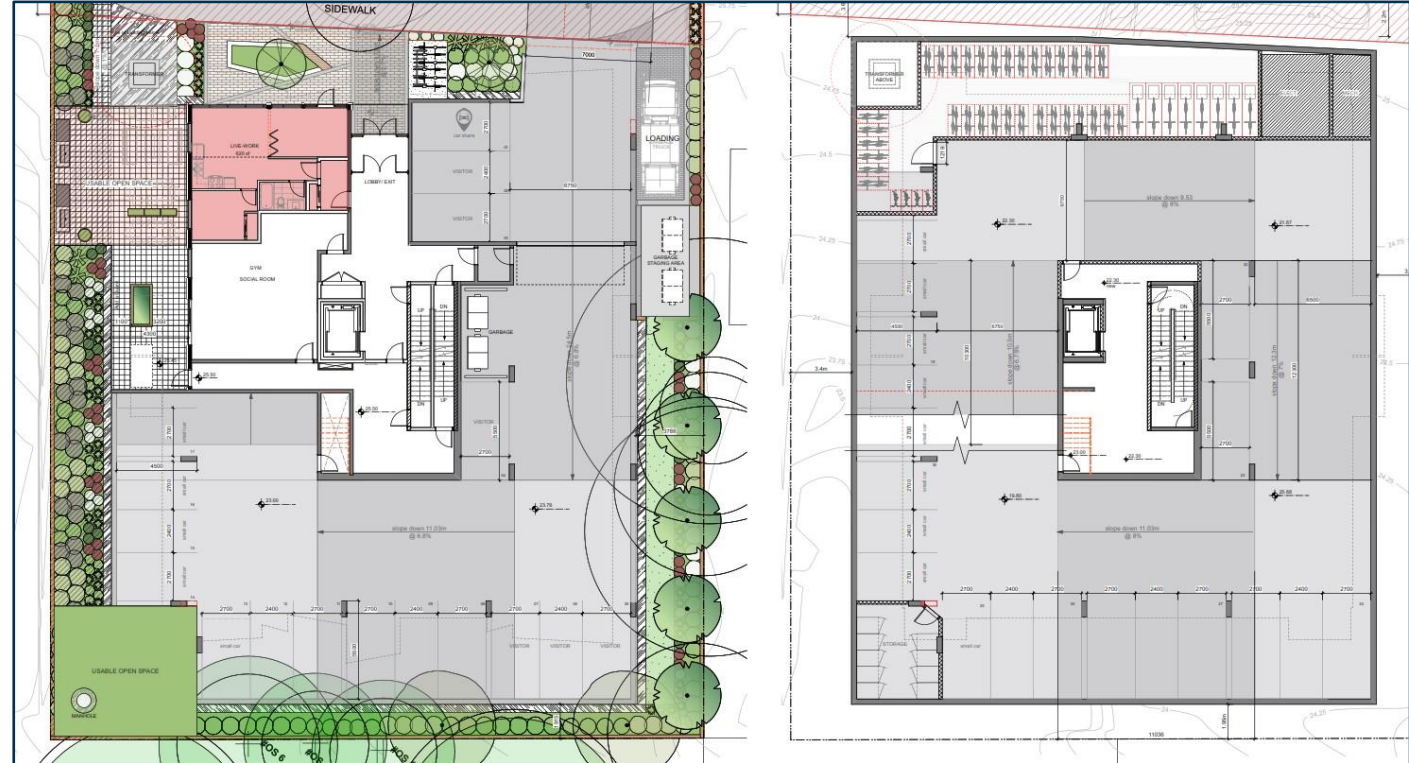
## SETBACKS





# Zoning Regulations

## PARKING



- 44 parking spaces
  - Includes 6 visitor spaces
- 0.74 parking spaces per dwelling unit



# Questions

