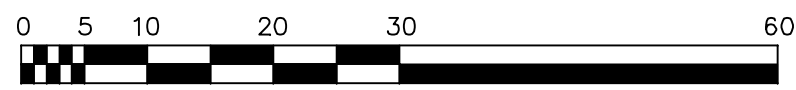


Plan EPP60266

- Lot 5, Section 11, Esquimalt District, Plan 6722, Except that part in Plan 27619
- Lot 6, Section 11, Esquimalt District, Plan 6722, Except that part in Plan 27619
- Lot 7, Section 11, Esquimalt District, Plan 6722, Except that part in Plan 15945
- Lot 1, Section 11, Esquimalt District, Plan 36280

Pursuant to Section 100(1)(b) of the Land Title Act
BCGS 92B.043



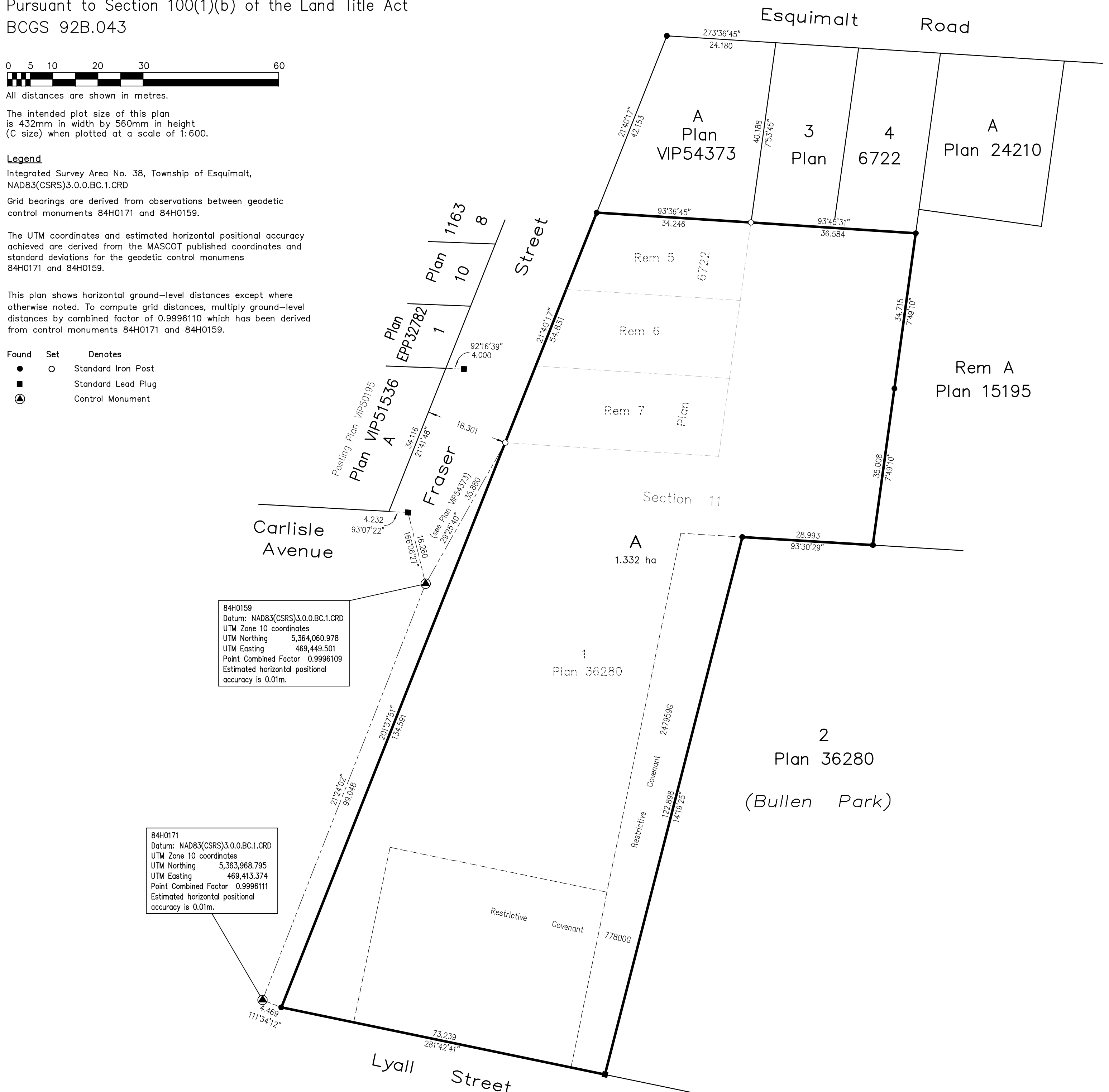
The intended plot size of this plan is 432mm in width by 560mm in height (C size) when plotted at a scale of 1:600.

Integrated Survey Area No. 38, Township of Esquimalt,
NAD83(CSRS)3.0.0.BC.1.CRD

The UTM coordinates and estimated horizontal positional accuracy achieved are derived from the MASCOT published coordinates and standard deviations for the geodetic control monuments 84H0171 and 84H0159.

This plan shows horizontal ground-level distances except where otherwise noted. To compute grid distances, multiply ground-level distances by combined factor of 0.9996110 which has been derived from control monuments 84H0171 and 84H0159.

Found	Set	Denotes
●	○	Standard Iron Post
■		Standard Lead Plug
⊙		Control Monument



This plan lies within the Capital Regional District.

The field survey represented by this plan was completed on the 17th day of March, 2016.
James Worton, BCLS 757