

322 Plaskett PL

DP & DVP APPLICATION



Figure 1. 2017 Airphoto showing historic shoreline access.



Figure 2. 2021 Airphoto showing historic shoreline access removed (2019 Airphoto was not clear if access was in place or removed).



Figure 3. 2025 Airphoto showing new shoreline access installed.

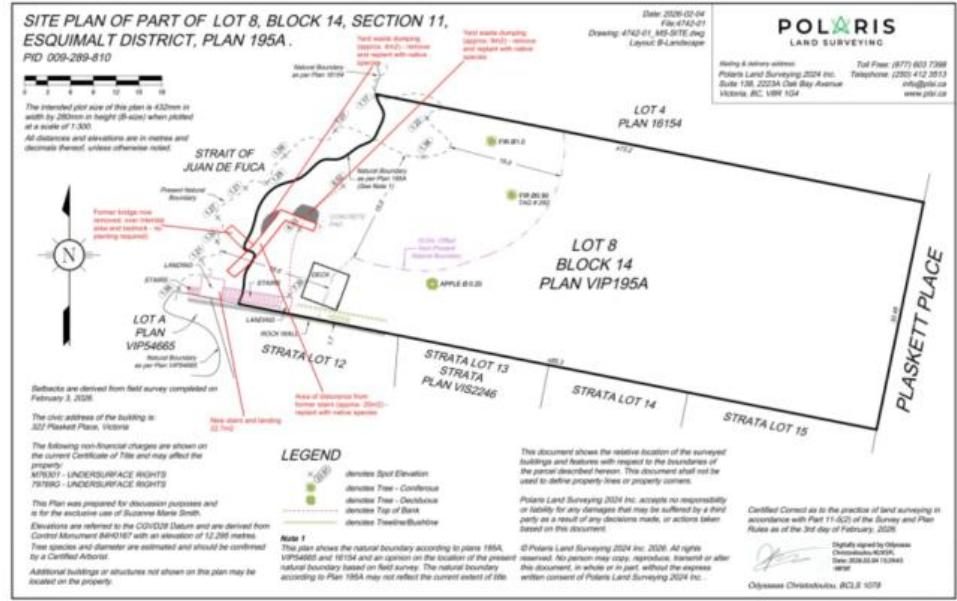


Figure 4. Survey plan with mark up by Swell Environmental..



Photo 1. Lawn, landscaping and wooden deck at the top of the shoreline bank.



Photo 2. New landing and stairs installed between 2023 and 2025.



Photo 3. New landing and stairs installed between 2023 and 2025.



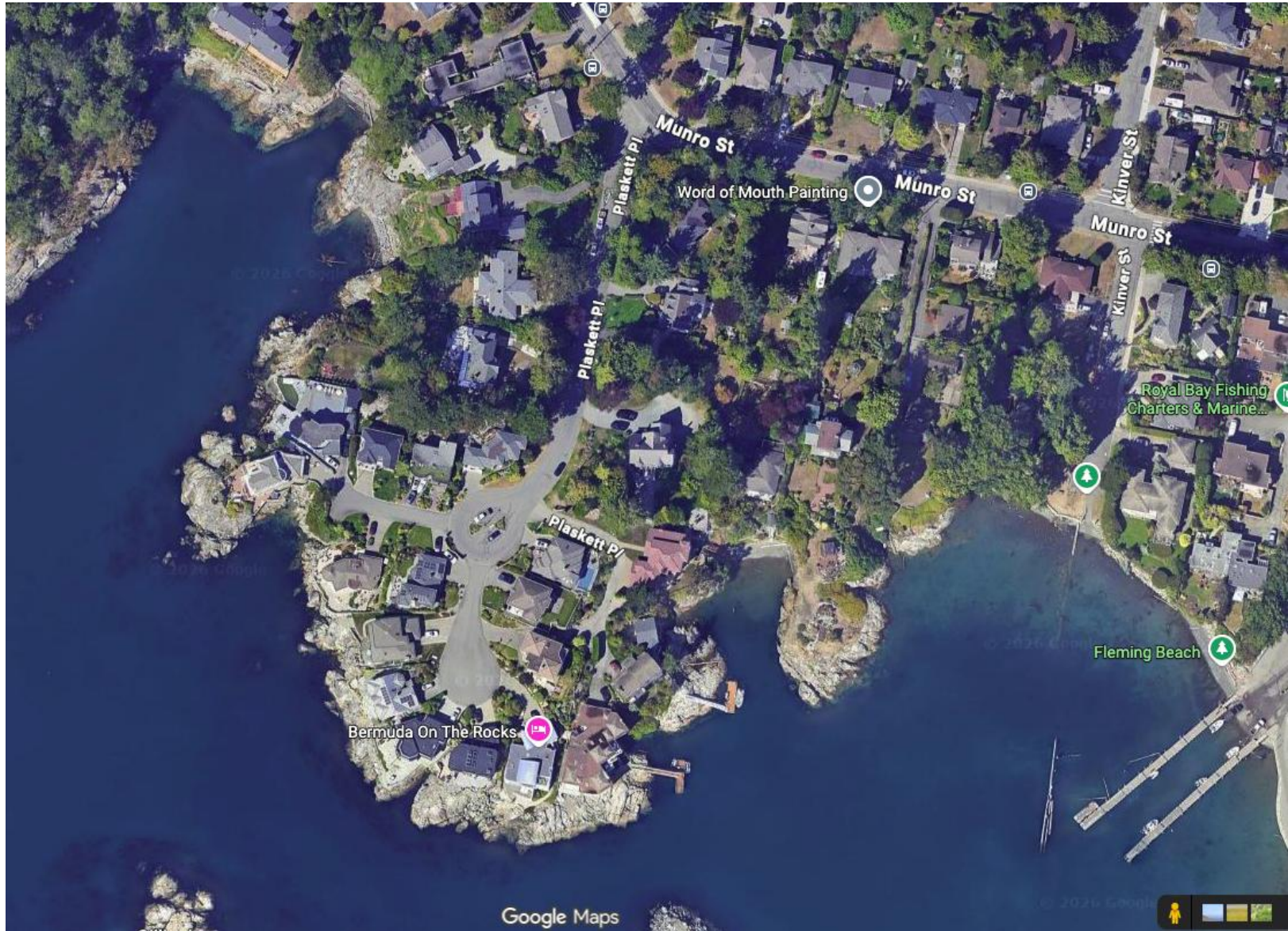
Photo 4. New landing and stairs installed between 2023 and 2025.



Photo 5. New landing and stairs installed between 2023 and 2025.



Photo 6. Historic shoreline access (removed between 2017 and 2021).





















322 Plaskett Place - Shoreline Planting Plan

ocean spray	<i>Holodiscus discolor</i>	5	min. 1 gallon pot
Nootka rose	<i>Rosa nutkana</i>	5	min. 1 gallon pot
snowberry	<i>Symphoricarpos albus</i>	13	min. 1 gallon pot
red flowering currant	<i>Ribes sanguineum</i>	5	min. 1 gallon pot
June plum	<i>Oemelaria cerasiformis</i>	5	min. 1 gallon pot
TOTAL (min. 1/m², approx. 33m²)		33	

Site preparation and maintenance:
 -Remove yard waste from DPA
 -Remove invasives from planting area
 -Install plants
 -Mulch (10cm composted mulch)
 -Irrigate and control invasives for a minimum of 3 years to establish plants, then wean off irrigation

NOTE: install plants where soil depth is sufficient for establishment, field fit during installation in consultation with the RPBio.

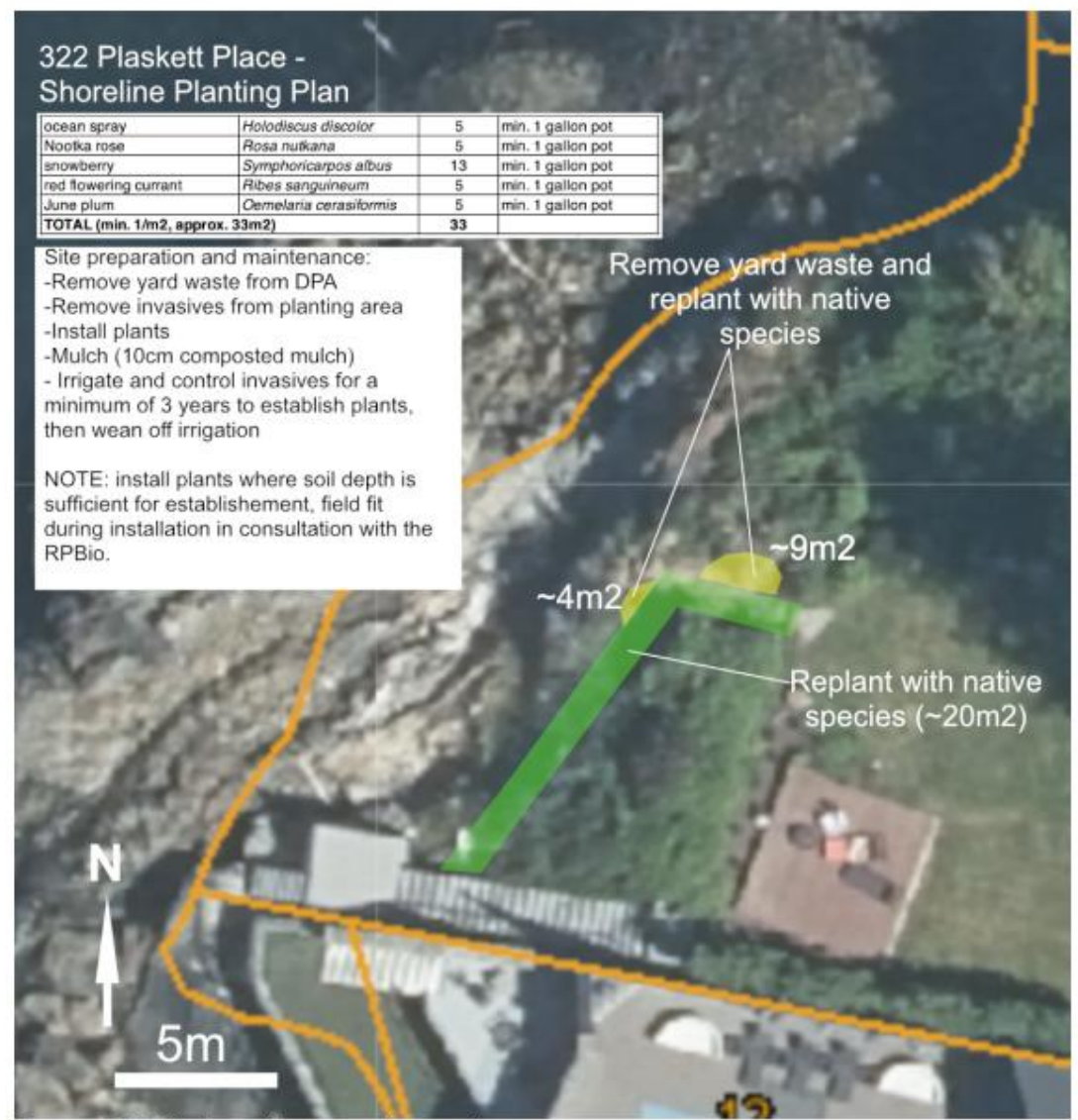


Figure 5. 2025 Airphoto with proposed restoration areas.

