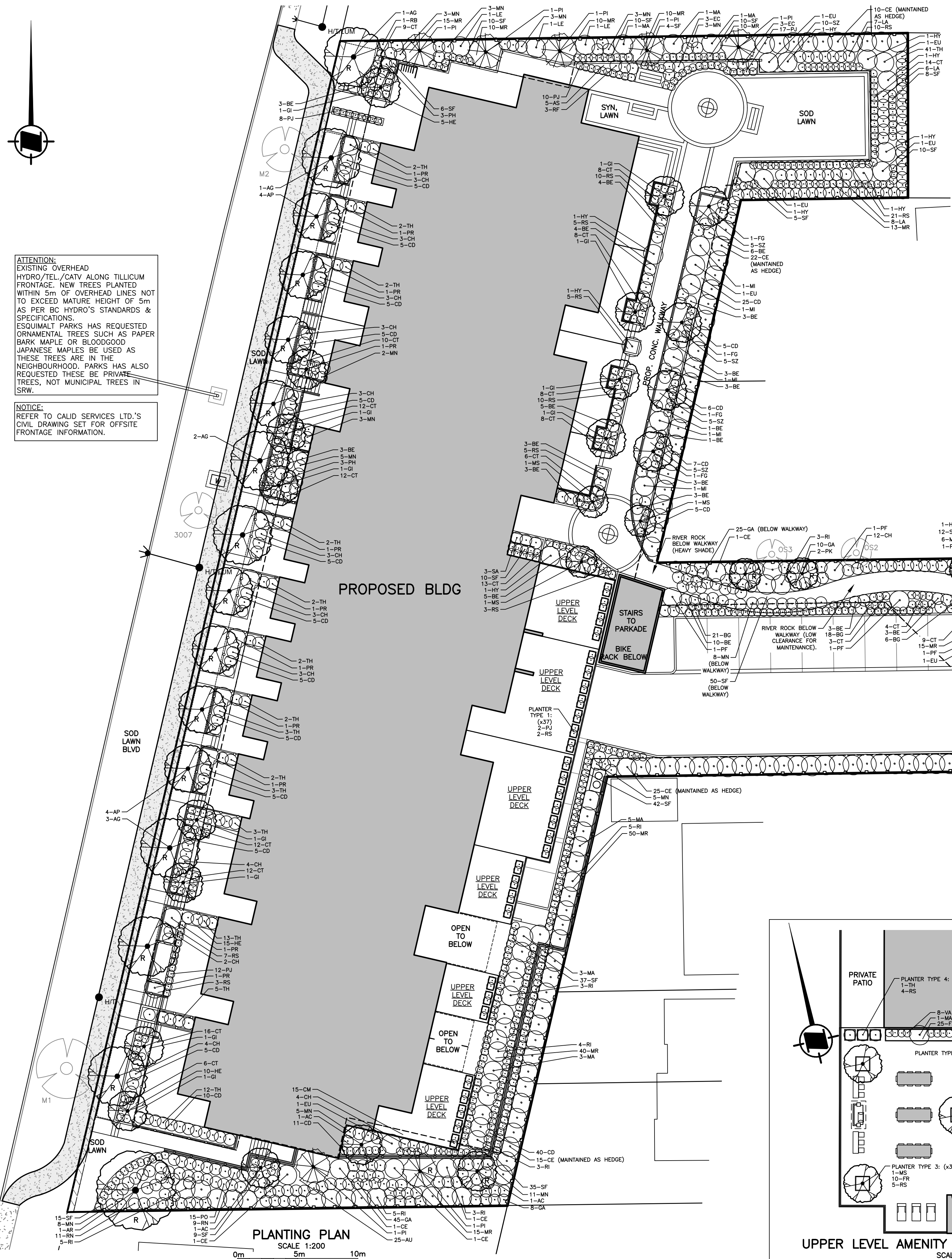


CALD SERVICES LTD. PREPARED THIS DRAWING FOR THE LISTED CLIENT ONLY AND ACCEPTS NO RESPONSIBILITY FOR THIRD PARTY USE.



ATTENTION:
EXISTING OVERHEAD
HYDRO/TEL/CATV ALONG TILlicum
FRONTAGE. NEW TREES PLANTED
WITHIN 5m OF OVERHEAD LINES NOT
TO EXCEED MATURE HEIGHT OF 5m
AS PER BC HYDRO'S STANDARDS &
SPECIFICATIONS.
ESQUIMALT PARKS HAS REQUESTED
ORNAMENTAL TREES SUCH AS PAPER
BARK MAPLE OR BLOODGOOD
JAPANESE MAPLES BE USED AS
THESE TREES ARE IN THE
NEIGHBOURHOOD. PARKS HAS ALSO
REQUESTED THESE BE PRIVATE
TREES, NOT MUNICIPAL TREES IN
SRW.

NOTICE:
REFER TO CALD SERVICES LTD.'S
CIVIL DRAWING SET FOR OFFSITE
FRONTAGE INFORMATION.

PLANTING NOTES

- CONTRACTOR TO STRIP ALL ORGANIC MATERIAL TO SPECIFIED LIMITS OF THE PLANTING AREAS AND DISPOSE OF OFFSITE. EXCAVATED DEPTH FOR SHRUBS TO BE MIN. 450mm, DEPTH OF TREE PITS TO BE 800mm. (TREE PITS TO BE EXCAVATED AT SAME TIME AS ANY SERVICING/UTILITY TRENCHING IN AREA. BACKFILL WITH GROWING MEDIUM & STAKE TREE PIT LOCATIONS FOR LANDSCAPE CONTRACTOR.)
- SCARIFY AREAS SHOWING EXCESSIVE COMPACTION AND SIDES AND BOTTOM OF TREE PITS.
- CONTRACTOR TO REMOVE AND DISPOSE OF OFF-SITE ALL DEBRIS AND UNUSABLE MATERIAL, ROOTS, STONES, ETC. THAT MAY INTERFERE WITH THE PROPER GROWTH OF THE FINISHED LANDSCAPING.
- GROWING MEDIUM TO MEET MMCD SPECIFICATION AND BC LANDSCAPE STANDARDS.
- GROWING MEDIUM DEPTH TO BE MIN. 150mm FOR SOD LAWN, 450mm FOR PLANTING AREAS AND 800mm FOR TREE PITS.
- IMPORTED TOPSOIL TO CONTAIN A MIN. OF 4% ORGANIC MATTER FOR CLAY LOAMS AND 2% ORGANIC MATTER FOR SAND LOAMS, TO A MAX. OF 20% VOLUME. SOIL TO BE FREE OF ROOTS, NOXIOUS WEEDS (CRABGRASS, CLOVERGRASS, HORSETAIL, SEEDS, ETC.), TOXIC MATERIALS, STONES OVER 30mm, OR FOREIGN OBJECTS. ACIDITY RANGE TO BE 5.5-7.5 pH. NATIVE TOPSOIL MAY BE USED PROVIDED IT MEETS STANDARDS SET FOR IMPORTED TOPSOIL.
- PLANTING OF TREES, SHRUBS AND GROUND COVERS TO CONFORM TO MMCD SECTION 02950 AND ESQUIMALT SPECIFICATIONS.
- LANDSCAPE CONTRACTOR TO ENSURE ALL MATERIALS AND PROCEDURES COMPLY WITH ACCEPTED LANDSCAPE PRACTICES. SPECIES SELECTION TO BE AS SPECIFIED. SUBSTITUTIONS WILL ONLY BE DONE WITH THE WRITTEN APPROVAL OF CALD SERVICES LTD.
- PLANT MATERIAL TO BE NURSERY GROWN STOCK AND COMPLY WITH BRITISH COLUMBIA STANDARD FOR CONTAINER GROWN PLANTS AND LANDSCAPE CANADA GUIDE SPECIFICATION FOR NURSERY STOCK. PLANTS TO BE TRUE TO NAME, TYPE AND FORM, AND BE REPRESENTATIVE OF THEIR SPECIES AND VARIETY. PLANTS TO BE OF GOOD HEALTH, PROPERLY PROPORTIONED, NOT WEAK, INJURED OR THIN.
- TREES TO BE STAKED AND BRACED IN AN UPRIGHT POSITION. INSTALL STAKES, CLAMPS, ANCHORS, ARBORTIE FABRIC TREE TIES, ETC. AS NOT TO DAMAGE THE TREE. TREE STAKES TO BE 100mm.
- LANDSCAPE CONTRACTOR TO GUARANTEE PLANT MATERIAL FOR THE STANDARD ONE (1) YEAR MAINTENANCE PERIOD.
- LANDSCAPE CONTRACTOR IS NOT RESPONSIBLE FOR PLANT LOSS DUE TO THEFT, VANDALISM, OR ANIMALS DURING THE MAINTENANCE PERIOD.
- PRUNING OF TREES TO BE DONE BY A CERTIFIED ARBORIST.
- WELL-ROTTED, LOW WOOD CONTENT, HIGH ORGANIC CONTENT MULCH TO BE APPLIED TO BEDS AFTER FINISHED GRADING IS APPROVED AND PLANTING COMPLETE. MULCH RINGS REQUIRED FOR TREES IN SOD LAWN. MULCH TO BE FREE OF CHUNKS, STICKS, SOIL, STONES, ROOTS, ETC. LANDSCAPE CONTRACTOR TO ENSURE MINIMUM BARK MULCH DEPTH OF 50mm AFTER SETTLEMENT. 1.2m² MULCH RINGS REQUIRED FOR ALL TREES IN LAWN AREAS.
- ALL EXCAVATED TREE PITS SHALL BE REVIEWED BY CALD SERVICES LTD. PRIOR TO BACKFILLING.

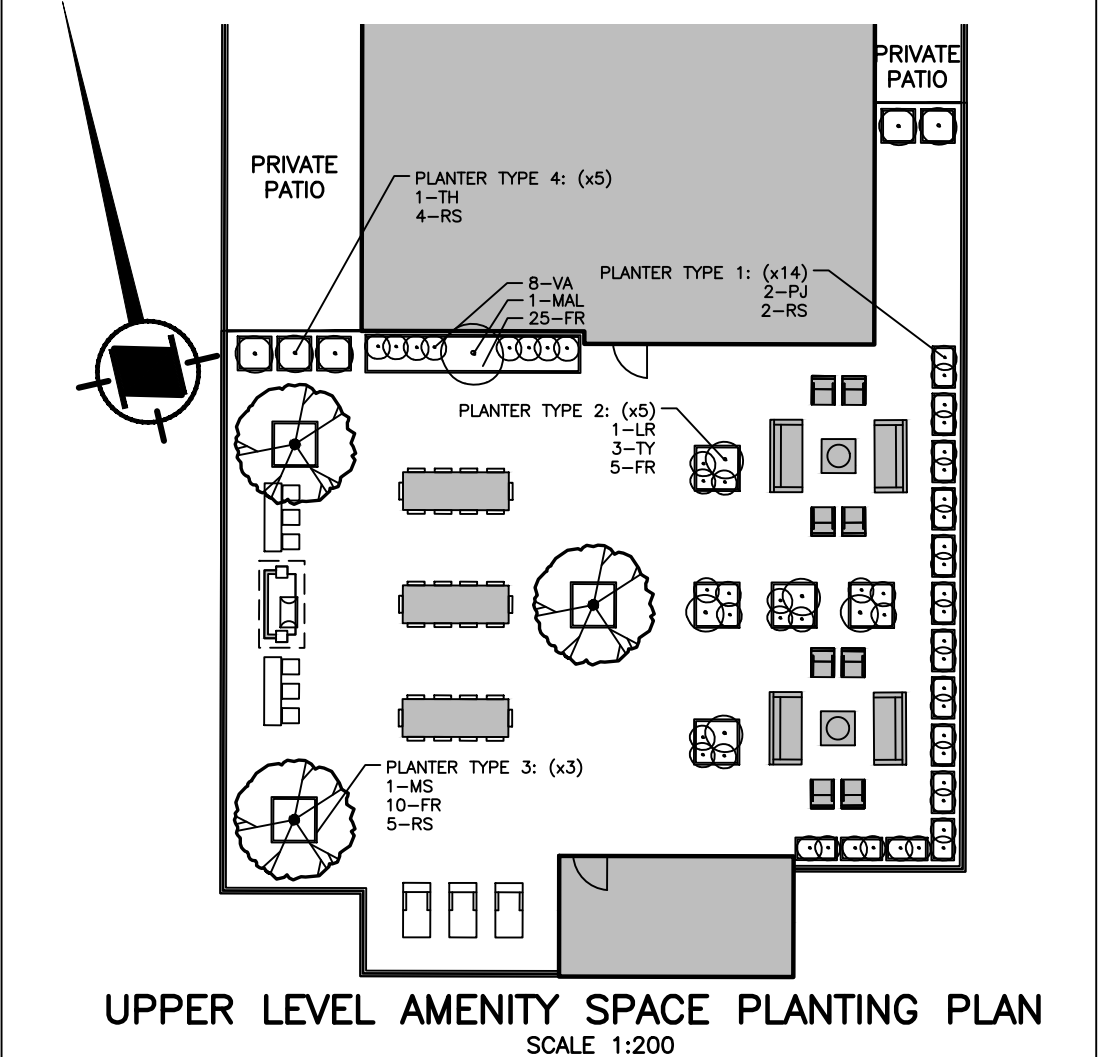
IRRIGATION NOTES

- IRRIGATION CONTRACTOR TO INSTALL IRRIGATION SYSTEM TO ALL APPLICABLE PLUMBING REGULATIONS.
- IRRIGATION POINT OF CONNECTION TO BE WITHIN MECHANICAL ROOM.
- SOD LAWN AREAS, TREES AND PLANTING AREAS TO BE IRRIGATED. SOD LAWN TO HAVE A MICROSPRAY IRRIGATION SYSTEM WITH HEAD TO HEAD COVERAGE. PLANTING BEDS TO BE IRRIGATED WITH DRIP IRRIGATION. TREES SOD BLVD TO HAVE TWO (2) EMITTER LOOPS PER TREE. TREES IN PRE-CAST PLANTERS OR RETAINED PLANTING BEDS TO HAVE ONE (1) EMITTER LOOP TO PREVENT OVER SATURATION.
- IRRIGATION SYSTEM TO BE DESIGNED BY A CERTIFIED IRRIGATION DESIGNER AS CERTIFIED BY IIABC OR IA. SHOP DRAWINGS TO BE PROVIDED TO CALD SERVICES LTD. FOR REVIEW.
- ALL IRRIGATION COMPONENTS AND INSTALLATION TO COMPLY WITH MMCD AND IIABC STANDARDS FOR LANDSCAPE IRRIGATION SYSTEMS. SYSTEM TO INCLUDE FLOW SENSOR, CENTRAL SHUT-OFF VALVE, AND METER. PRESSURE REGULATING DEVICE AND MOISTURE SENSOR/RAIN DELAY CONTROLLER ALSO REQUIRED.
- IRRIGATION SYSTEM TO HAVE A DYNAMIC OPERATING PRESSURE BETWEEN 50 TO 90 psi.
- IRRIGATION CONTRACTOR TO ENSURE ALL CRITICAL POINTS (CORNERS, EDGES, TIGHT CONTOURS, ETC) RECEIVE FULL COVERAGE.
- IRRIGATION CONTRACTOR TO LOCATE ALL UNDERGROUND SERVICES PRIOR TO COMMENCING WORK.
- IRRIGATION SYSTEM TEST TO BE WITNESSED BY CALD SERVICES LTD. CONTRACTOR TO PROVIDE 48 HOUR NOTICE FOR REVIEW.
- IRRIGATION CONTRACTOR TO GUARANTEE WORK AND MATERIALS FOR ONE YEAR FROM DATE OF SUBSTANTIAL COMPLETION.
- IRRIGATION CONTRACTOR TO PROVIDE AS-BUILT DRAWINGS AND ZONE MAPS TO DEVELOPER.
- IRRIGATION CONTRACTOR TO INCLUDE ONE WINTERIZATION & SYSTEM START UP IN THEIR PRICING.
- 150mm² PVC IRRIGATION SLEEVES REQUIRED AT ALL HARD SURFACES (SIDEWALKS, DRIVEWAYS, RETAINING WALLS, ETC.) TO ENSURE ALL LAWNS & PLANTING AREAS CAN BE CONNECTED TO IRRIGATION SYSTEM. FAILURE TO PROVIDE IRRIGATION SLEEVES WILL RESULT IN WORK BEING REDONE AT CONTRACTOR'S EXPENSE.
- IRRIGATION CONTRACTOR TO PROVIDE MAINTENANCE MANUAL FOR IRRIGATION SYSTEM, TIMER, ETC. TO DEVELOPER FOR OWNER/STRATA ALONG WITH A BRIEF DESCRIPTION OF THE RECOMMENDED WATERING SCHEDULE. ATTENTION: IT SHALL BE THE RESPONSIBILITY OF THE OWNER/STRATA TO REPLACE ANY DEAD PLANT MATERIAL (INCLUDING TREES) RESULTING FROM THEIR FAILURE TO OPERATE THE IRRIGATION SYSTEM TO THE WATERING SCHEDULE PROGRAMMED BY THE IRRIGATION CONTRACTOR AT PROJECT TURNOVER.

Plant List					
Trees:	Code	Qty.	Size	Accent Plants, Perennials & Grasses	Code Qty. Size
Acer circinatum 'Pacific Fire' (Vine Maple)	AC	3	4cm Cal.	Carex testacea 'Orange Flame' (Sedge)	CT 172 #1 Pot
Acer griseum (Paperbark Maple)	AG	5	5cm Cal.	Carex morrowii 'Ice Dance' (Sedge)	CM 15 #1 Pot
Acer palmatum 'Bloodgood' (Japanese Maple)	AP	10	5cm Cal.	Echinacea (Purple Coneflower)	EC 9 #2 Pot
Acer rubrum 'Red Rocket' (Columnar Red Maple)	AR	1	6cm Cal.	Hemerocallis 'Stella de Oro' (Day Lily)	HE 30 #1 Pot
Fagus sylvatica 'Dawyck Gold' (Columnar Golden Beech)	FG	4	5cm Cal.	Lavandula angustifolia 'Hidcote' (English Lavender)	LA 21 #2 Pot
Ginkgo biloba 'Goldspire' (Columnar Ginkgo Tree)	GI	11	5cm Cal.	Miscanthus sinensis 'Adagio' (Dwarf Maiden Grass)	MI 5 #5 Pot
Magnolia stellata 'Royal Star' (Star Magnolia)	MS	6	5cm Cal.	Rosemarinus officinalis 'Prostratus' (Trailing Rosemary)	RS 153 #1 Pot
Picea omorika 'Bruns' (Serbian Spruce)	PI	9	3.0m Ht.	Rudbeckia fulgida 'Goldstrum' (Black-eyed Susan)	RF 9 #3 Pot
Prunus 'Amadeus' (Columnar Flowering Cherry)	PR	11	5cm Cal.	Shizostylis coccinea (Crimson Flag Lily)	SZ 30 #1 Pot
Prunus serrulata 'Kwanzan' (Flowering Cherry)	PK	3	5cm Cal.		
Shrubs:					
Thuja occidentalis (Emerald Arborvitae)	TH	98	1.2m Ht.		
Arctostaphylos uva-ursi (Kinnikinnick)	AU	25	#1 Pot	Berberis thunbergii 'Golden Nugget' (Dwarf Yellow Barberry)	BG 45 #1 Pot
Ceanothus, (California Lilac)	CE	77	#3 Pot	Berberis thunbergii 'Rose Glow' (Barberry)	BE 74 #2 Pot
Gaultheria shallon (Salal)	GA	88	#1 Pot	Choisya ternata (Mexican Orange Blossom)	CH 50 #3 Pot
Leucothoe axillaris (Coastal Leucothoe)	LE	3	#3 Pot	Cotoneaster dammeri 'Coral Beauty' (Trailing Cotoneaster)	CD 170 #1 Pot
Mahonia aquifolium (Oregon Grape)	MA	14	#3 Pot	Euonymus alata 'Ruby Haag' (Winged Burning Bush)	EU 8 #5 Pot
Mahonia nervosa (Cascade Oregon Grape)	MN	69	#1 Pot	Hydrangea macrophylla 'Bailmer' (Hydrangea)	HY 11 #3 Pot
Mahonia repens (Creeping Oregon Grape)	MR	194	#1 Pot	Philadelphus lewisii 'Miniature Snowflake' (Dwarf Mock Orange)	PH 6 #1 Pot
Polystichum munitum (Sword Fern)	SF	280	#1 Pot	Pieris japonica 'Cavatine' (Dwarf Lily-of-the-Valley Shrub)	PJ 155 #1 Pot
Potentilla fruticosa (Shrubby Cinquefoil)	PO	15	#2 Pot	Pieris japonica 'Forest Flame' (Lily-of-the-Valley Shrub)	PF 4 #5 Pot
Ribes sanguineum (Red Flowering Currant)	RI	33	#2 Pot	Rhododendron 'Baden Baden' (Dwarf Rhododendron)	RB 2 #3 Pot
Rosa Nutkana (Nootka Rose)	RN	20	#2 Pot	Sarcococca humilis (Sweetbox)	SA 3 #3 Pot
Roof-top Amenity Space:					
Fragaria chiloensis (Coastal Strawberry)	FR	80	#1 Pot		
Lauris nobilis (Bay Laurel Cone Topiary Form)	LR	5	#5 Pot		
Magnolia stellata 'Royal Star' (Star Magnolia)	MS	3	#5 Pot		
Malus domestica (Domestic Apple Tree, Espalier Form)	MAL	1	1.5m Ht.		
Vaccinium corymbosum 'Northsky' (Dwarf Blueberry)	VA	8	#2 Pot		
Rosemarinus officinalis 'Prostratus' (Trailing Rosemary)	RS	63	#1 Pot		
Thuja occidentalis (Emerald Arborvitae)	TH	5	1.2m Ht.		
Thymus vulgaris (French Thyme)	TY	15	#2 Pot		
Notes:					
1. Plants to be irrigated with an automatic irrigation system.					
2. Changes to plant size, quantity, or type to be reviewed & approved in writing by Calid Services Ltd.					
3. Contractor to allow for 50 additional #1 Pot size shrubs when pricing job.					
4. Refer to Tree Replacement Table this page for replacement tree and cash-in-lieu information.					

TREE REPLACEMENT TABLE

	QTY.	REPLACEMENT RATIO	REPLACEMENT TREES
TREES FOR REMOVAL (INCLUDES BLVD.)	14	REFER TO TALMACK REPORT FOR INFORMATION	30
TOTAL REQUIRED REPLACEMENT TREES:			29
TOTAL PROP. TREES:			54
TOTAL ELIGIBLE AS REPLACEMENT TREES:			25
CASH IN LIEU TREES REQUIRED:			4
AS PER ESQUIMALT'S TREE REPLACEMENT BY LAW, NO REPLACEMENT TREE SHALL BE PLANTED WITHIN 2m OF FOUNDATION WALL OR BUILDING OR WITHIN 1m OF PROPERTY LINE. TO BE REVIEWED FURTHER BY CALD SERVICES LTD., DEVELOPER, ESQUIMALT PARKS & PLANNING.			
REFER TO TALMACK URBAN FORESTRY LTD. REZONING IMPACT ASSESSMENT AND TREE MANAGEMENT PLAN DATED MARCH 15, 2023 FOR ADDITIONAL INFORMATION.			



DEVELOPMENT PERMIT ONLY
Not for Construction



NOTICE:
LANDSCAPE DESIGN IS ONLY VALID
IF REVIEWED DURING CONSTRUCTION
BY CALD SERVICES LTD.

NOTICE:
EXISTING & PROPOSED MUNICIPAL
SERVICES ARE NOT SHOWN ON THIS
DRAWING, REFER TO DRAWINGS BY
OTHERS.

THE CONTRACTOR IS TO CALL B.C.
ONE CALL, AND HAVE EXISTING U/G
SERVICES STAKED PRIOR TO ANY
CONSTRUCTION.

Dwg. No.

REFERENCE DRAWINGS

DATE

LEGEND

PROP. DECIDUOUS TREE

PROP. CONIFER TREE

PROP. SHRUBS

EX. STREET TREE

PROP. REPLACEMENT TREES

1.2m Ht. METAL FENCE (PICKET STYLE)

1.8m PERIMETER WOOD FENCE

RAILING OR PRIVACY SCREEN (DESIGN BY OTHERS)

PROP. CONC. SIDEWALK

UNIT PAVERS

SLAB PAVERS

RIVER ROCK (COBBLES)

11 APR 09/24 TO DEVELOPMENT SERVICES COMMENTS DP

10 FEB 5/23 D.P. ISSUE DRAWINGS DP

9 JUN 26/23 TO ARCHITECTURAL CHANGES DP

8 MAY 31/23 TO TILlicum FRONTAGES CHANGES DP

7 APR 17/23 TO REVISED TALMACK TREE REPORT DP

6 DEC 02/22 TO NEW STAIR & RET. WALL CHANGES DP

5 NOV 30/22 TO CIVIL & ARCH. CHANGES DP

REV. DATE REVISIONS BY APPROVED

88FOUR DEVELOPMENT
Planting Plan & Notes
Client: LIDA Construction Ltd.

207-2750 QUADRA ST.
VICTORIA, B.C. V8T 4E8
PHONE: (250) 386-6919
FAX: (250) 381-6919
engineer@calid.ca

Drawn dp Date February 22, 2022
Checked Project # 0762
Approved Scale AS NOTED
Designed dp

L2

Rev. 10

CANCEL PRINTS BEARING EARLIER LETTER